



## NORTH END ROAD, W14 £329,000 LEASEHOLD

A well presented one double bedroom flat located on the Fulham/Barons Court border, close to West Brompton and West Kensington station.

Fulham & Parsons Green | 020 7731 3388  
40 New King's Road, Fulham, London, SW6 4ST

**Winkworth**

for every step...

[winkworth.co.uk](http://winkworth.co.uk)



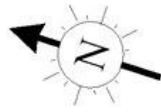
## DESCRIPTION

This recently renovated flat benefits from a large open plan sitting room/ modern kitchen which is well-equipped with excellent storage solutions. The double bedroom has ample built in storage and is served by a tiled bathroom.

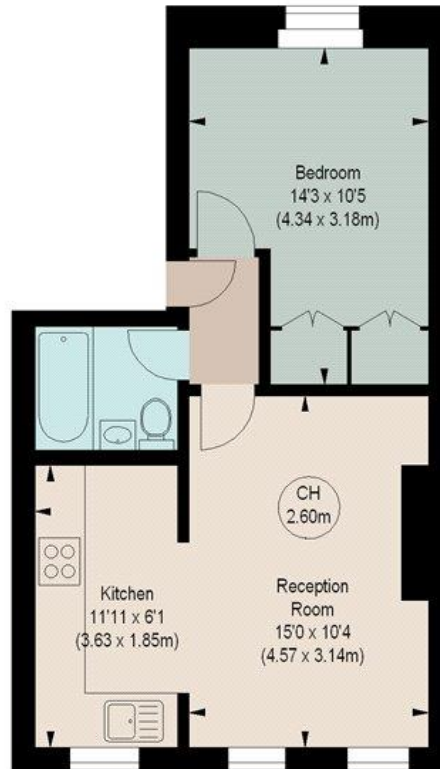
Located on the North End Road the property is within immediate proximity of local amenities, shops and restaurants and is a short walk away from both Fulham Broadway, West Brompton and West Kensington tube station. There are also several bus routes connecting the property to Central London.



North End Road, W14  
 Approximate gross internal area  
 419 sq ft / 38.93 sq m



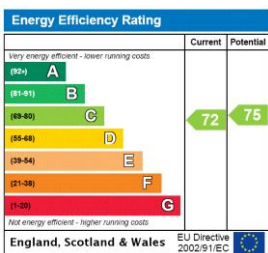
Key :  
 CH - Ceiling Height



**SECOND FLOOR**

The floor plan is not to scale and measurements and areas shown are approximate and therefore should be used for illustrative purposes only. The plan has been prepared in accordance with the RICS code of Measuring Practice and whilst we have confidence in the information produced, it must be not be relied on. If there is any aspect of particular importance, you should carry out or commission your own inspection of the property.  
 Copyright of FeaturePRO.

This floorplan is for illustration purposes only and is not to scale. The position and size of doors, windows, appliances and other features are approximate.



**Tenure:** Leasehold  
**Term:** 125 year and 0 months  
**Service Charge:** Ask agent  
**Ground Rent:** £150 Annually (subject to increase)  
**Council Tax Band:** C  
 Where no figures are shown, we have been unable to ascertain the information. All figures that are shown were correct at the time of printing.

Fulham & Parsons Green | 020 7731 3388 | fulham@winkworth.co.uk  
 40 New King's Road, Fulham, London, SW6 4ST



for every step...

winkworth.co.uk

Winkworth wishes to inform prospective buyers and tenants that these particulars are a guide and act as information only. All our details are given in good faith and believed to be correct at the time of printing but they don't form part of an offer or contract. No Winkworth employee has authority to make or give any representation or warranty in relation to this property. All fixtures and fittings, whether fitted or not are deemed removable by the vendor unless stated otherwise and room sizes are measured between internal wall surfaces, including furnishings.