



Alswitha Terrace, King Alfred Place, Winchester, Hampshire, SO23 7DQ



Alswitha Terrace, King Alfred Place, Winchester, Hampshire, SO23 7DQ

Beautiful period property in ever popular Hyde

This beautiful period property is perfectly placed on the corner of Alswitha Terrace, located in the ever popular location of Hyde. This property enjoys good access to the national railway station and City centre and falls within catchment of St Bede's Primary and Westgate school.

The property has been sympathetically extended to the rear and the substantial living accommodation is well-proportioned. The large hallway invites visitors into the property with the lovely open plan kitchen/dining room on the right which is modern and complete with double oven, gas hob and dishwasher. The adjoining dining area makes for a very sociable and bright space courtesy of the double doors leading out to the garden. Across the hallway is the generously sized sitting room and leading on from this is convenient downstairs shower room and study, perfect for those who work from home. Stairs lead to the basement that has been converted to create a wonderful fifth bedroom with built in storage.

Stairs rise to the first floor where there are four well-proportioned bedrooms, with the master benefitting from an ensuite bathroom and there is a further modern family bathroom.

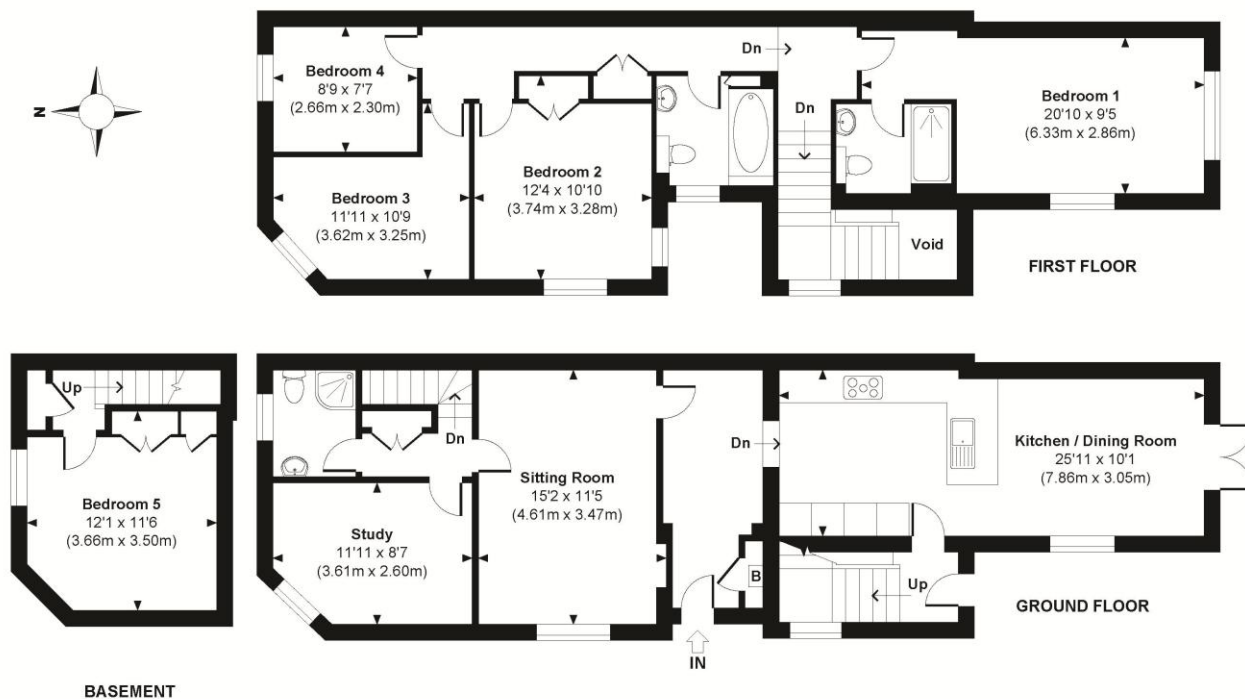
There is an enclosed and secure garden to the rear of the property which has a patio area for seating and the remainder is laid to lawn with mature shrubs lining the borders. For those that require a larger outside space to enjoy external pursuits, the local recreation ground is located at the end of the road with tennis courts, artificial grass football pitches, cricket nets, and a vast area of grass which can be used by the public. Permit parking is available.





Alswitha Terrace

Approximate Gross Internal Area
Total = 1621 Sq Ft / 150.62 Sq M
(Excluding void)



© www.propertyfocus.co | Professional Property Photography & Floorplans
This floorplan is for illustrative purposes only and is not to scale. It's accuracy has been checked, but no responsibility is taken for any error, omission or misrepresentation. The size and placement of windows, doors and other features are approximate only. Dimensions and North point should be verified before making decisions reliant upon them. Measured and drawn in accordance with RICS guidelines.

Alswitha Terrace, King Alfred Place, Winchester, Hampshire, SO23 7DQ

Directions

Head north on Southgate Street towards St Clement Street. Turn right onto Jewry Street. Continue onto Hyde Street. Turn right onto King Alfred Place and continue straight. The property is on the right.

Location

Alswitha Terrace is situated in the sought-after area of Hyde and is superbly positioned for easy access to the mainline railway station (links to London Waterloo in approximately 55 minutes), and city with its high street shops, boutiques, library, coffee shops, public houses, restaurants, theatre, cinema, museums and, of course, the city's historic cathedral. The house is situated in the catchment for good local schools, namely St Bede Primary and Westgate Secondary.

COUNCIL TAX: Band E, Winchester City Council

SERVICES: Mains Gas, Electricity, Water & Drainage.

BROADBAND: FTTC (Fibre to the Cabinet). Checked on Openreach February 2025.

MOBILE SIGNAL: Coverage With Certain Providers.

HEATING: Mains Gas Central Heating.

TENURE: Freehold.

EPC RATING: To be confirmed

PARKING: Permit parking

Viewings

Strictly by appointment with Winkworth Winchester Office

[Winkworth.co.uk/winchester](https://www.winkworth.co.uk/winchester)

Winkworth Winchester

72 High Street, Winchester, SO23 9DA

01962 866 777 | winchester@winkworth.co.uk

Winkworth Country House Department

13 Charles II Street, St James's, London, SW1Y 4QU

020 7870 4878 | countryhouse@winkworth.co.uk

Winkworth

See things differently