



17 Wessex Gardens, Romsey, Hampshire, SO51 5RD

Winkworth



A WELL PRESENTED THREE BEDROOM DETACHED PROPERTY

Offered for sale with no onward chain, this detached home is located within the catchment for Halterworth Primary School and The Mountbatten School. Situated in a quiet residential area on the eastern side of Romsey Halterworth is a sought after location due to its proximity to the market town of Romsey and good schools. Locally amenities include a handy convenience store and the property is close to Tadburn Meadows which provides a lovely area of greenery for dog walkers and families alike. More extensive amenities can be found in the nearby market town of Romsey approximately 1.5 miles away with two large supermarkets, banks, pubs and many independent retailers. The property is close to excellent commuter links with the M27 motorway and M3 within a reasonable driving distance. Romsey also benefits from a train Station which provides links to Southampton and the West Country.

This wonderful three-bedroom family home features a light and airy entrance, a superb open plan living/dining room with large windows overlooking the front elevation with doors opening onto the rear garden. The modern kitchen is fitted with a wide range of eye and base level units. The kitchen is supplemented by a useful utility room, in addition is a downstairs wc. To the first floor are three bedrooms and a modern family bathroom with shower over bath. Outside to the front of the property is residents parking, the front garden is mainly laid to lawn, the rear garden is fully enclosed and very private and provides access to a single garage. The property benefits from gas central heating.

- All mains utilities
- Ultrafast broadband available
- Test valley Borough Council Tax band 'D'
- No Onward Chain



Winkworth

**Address: 17 Wessex Gardens,
Romsey SO51 5RD**

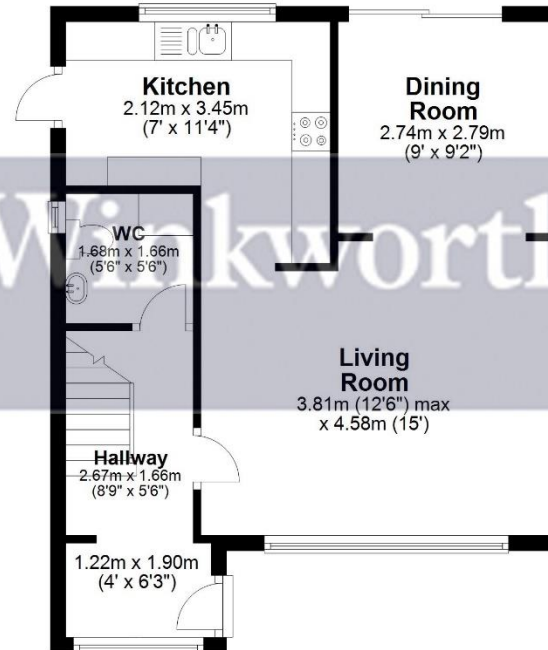
**Council Tax Band: 'D' circa.
£2101.1347 PA Test Valley BC
EPC: 'D'
Tenure: Freehold**



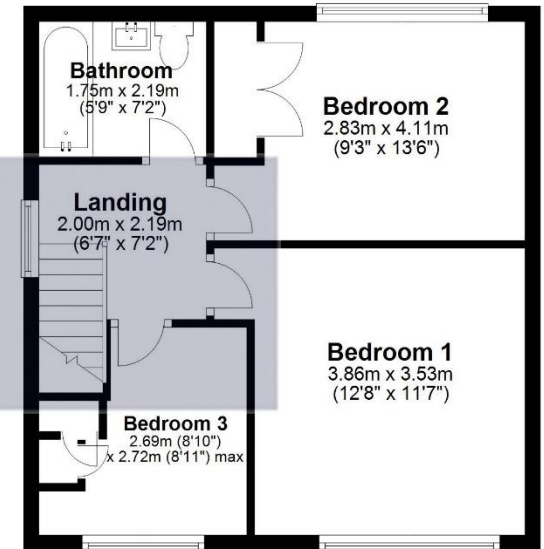
Outbuilding
Approx. 12.3 sq. metres (132.5 sq. feet)



Ground Floor
Approx. 44.7 sq. metres (481.1 sq. feet)



First Floor
Approx. 42.6 sq. metres (458.2 sq. feet)



Total area: approx. 99.6 sq. metres (1071.7 sq. feet)

winkworth.co.uk/romsey

Winkworth Romsey

18 Market Place, Romsey, Hampshire, SO51 8NA
01794 511911 | romsey@winkworth.co.uk

winkworth.co.uk/romsey

Winkworth Winchester

2 Black Swan Buildings, Southgate Street,
Winchester, Hampshire, SO23 9DT
01962 866777 | winchester@winkworth.co.uk

Winkworth Mayfair & Country House Department

11 Berkeley Street, Mayfair, London, W1J 8DS
020 7871 0589 | countryhouse@winkworth.co.uk

Winkworth

See things differently