



INDIGO MEWS, CARYSFORT ROAD, LONDON, N16
£700,000 SHARE OF FREEHOLD

CHARMING ONE BEDROOM, SPLIT LEVEL FLAT SET WITHIN SOUGHT AFTER WAREHOUSE CONVERSION.

Winkworth Highbury | 020 7989 7000 | highbury@winkworth.co.uk

Winkworth

for every step...

winkworth.co.uk



DESCRIPTION:

A stunning one bedroom, ground floor apartment located in the sought-after Indigo Mews, N16. Spanning an impressive 775 sq ft, this contemporary residence offers a perfect blend of period features and modern living split across two floors.

The spacious open-plan living area is tastefully presented with exposed beams and high ceilings. Designed to maximise natural lighting, the large south-westerly facing windows span the length of the apartment. The main area seamlessly flows into a sleek and modern kitchen fitted with high-quality appliances and ample space for storage. A family bathroom also sits on the ground floor with a bath and overhead shower. Keeping with the theme, industrial style stairs lead to the upper mezzanine, hosting a generously sized and uniquely style bedroom.

Indigo Mews is ideally situated in a vibrant neighbourhood, with an array of local amenities just a short walk away. The nearby Stoke Newington Church Street is home to an eclectic mix of independent shops, cafes, and restaurants, creating a lively community atmosphere. For green spaces, Clissold Park is within easy reach (0.1 miles away), offering picturesque walking paths, a playground, and a café. Excellent transport links, including both overground and bus services, provide quick access to central London and beyond.

Any associated charges including, but not limited to, service charge, ground rent and sinking funds outlined in the marketing material is an approximation calculated using information provided by and described by the client at the time of instruction. The actual cost may be subject to change and therefore we recommend all interested parties carry out their own enquiries.

Winkworth

for every step...



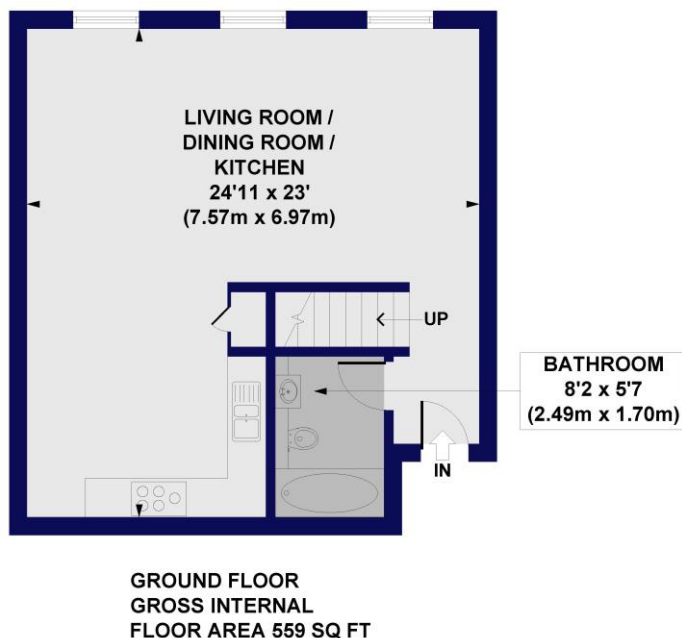
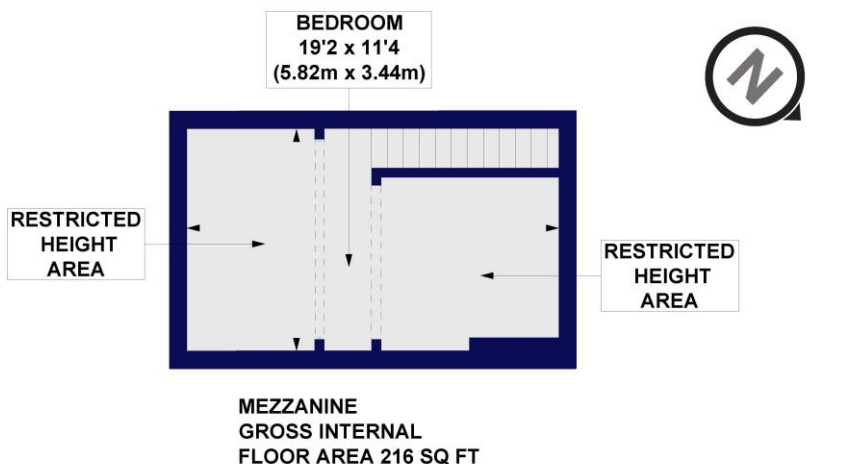
Winkworth

for every step...

winkworth.co.uk

Indigo Mews, Carysfort Road, N16

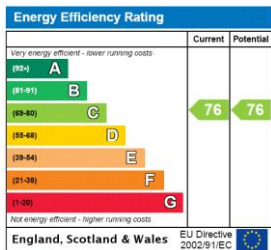
Approx. Gross Internal Floor Area 775 sq. ft / 71.96 sq. m (Including Restricted Height Area)
 Approx. Gross Internal Floor Area 605 sq. ft / 56.25 sq. m (Excluding Restricted Height Area)



All measurements of walls, doors, windows, fittings and appliances, including their size and location, are shown as standard sizes and do not constitute any warranty or representation by the seller, their agent or CP Creative. Any intending purchaser must satisfy himself by inspection or otherwise as to the correctness of the information contained in these plans. This plan is for illustrative purposes only and should be used as such by any prospective purchasers.



This floorplan is for illustration purposes only and is not to scale. The position and size of doors, windows, appliances and other features are approximate.



Winkworth Highbury | 020 7989 7000 | highbury@winkworth.co.uk



for every step...

winkworth.co.uk

Winkworth wishes to inform prospective buyers and tenants that these particulars are a guide and act as information only. All our details are given in good faith and believed to be correct at the time of printing but they don't form part of an offer or contract. No Winkworth employee has authority to make or give any representation or warranty in relation to this property. All fixtures and fittings, whether fitted or not are deemed removable by the vendor unless stated otherwise and room sizes are measured between internal wall surfaces, including furnishings.