



COBURG DWELLINGS, HARDINGE STREET, LONDON, E1
£400,000 LEASEHOLD

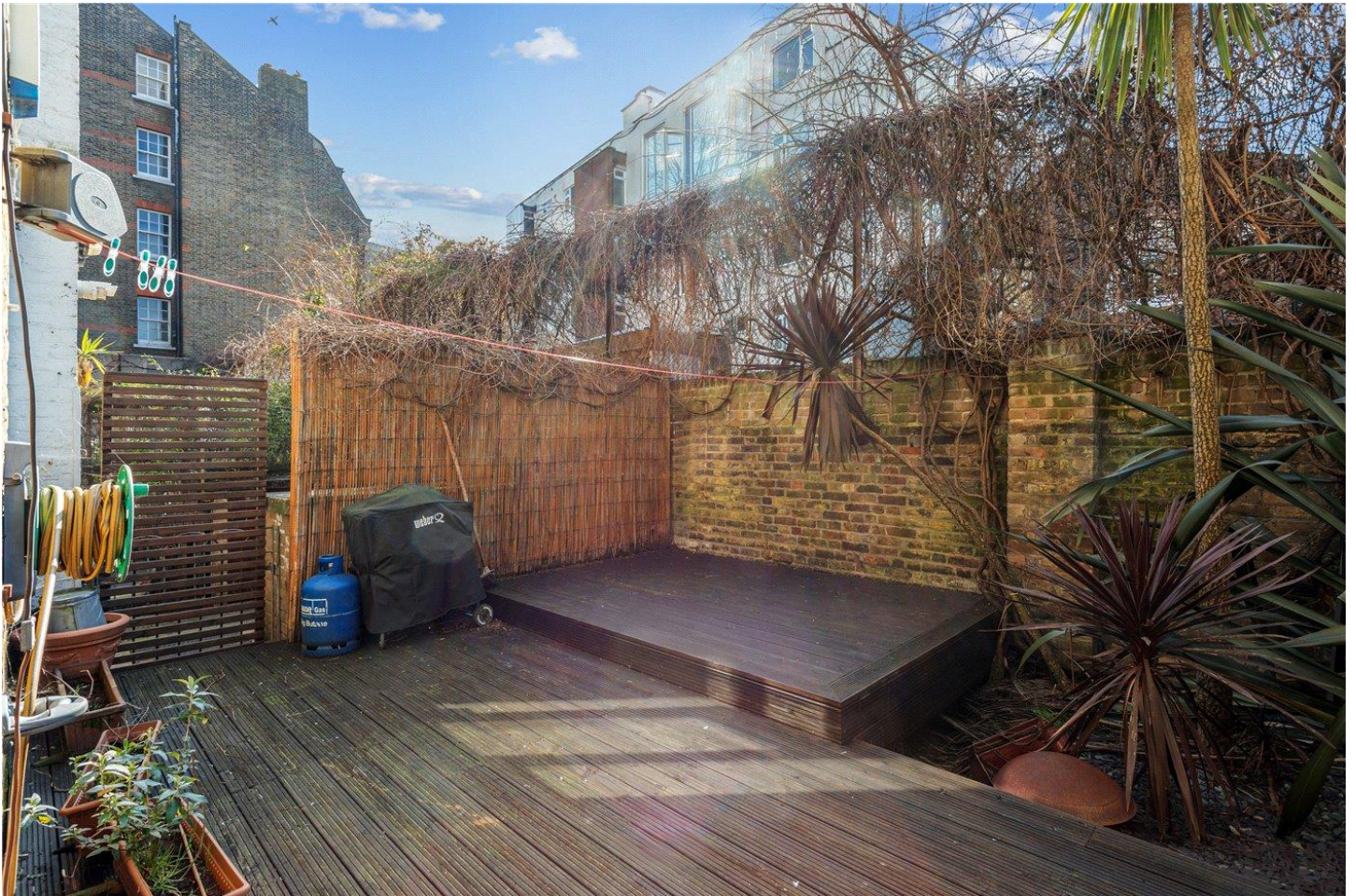
CHARACTERFUL TWO-BEDROOM FLAT WITH PRIVATE GARDEN

Shoreditch | 020 7749 7650 | shoreditch@winkworth.co.uk

Winkworth

winkworth.co.uk

See things differently



DESCRIPTION:

This charming two-bedroom ground-floor flat is set within a beautifully maintained mansion block dating back to the early 1900s. With 604 sqft of thoughtfully designed space, this property combines both character and modern living.

Boasting two generously sized double bedrooms, one of which is currently being used as a living area, this home offers flexibility to suit your needs. The property also comprises of a modern bathroom and a fully equipped kitchen. The open-plan kitchen, living, and dining area is perfect for entertaining or relaxing, with a seamless flow to the large private deck and garden.

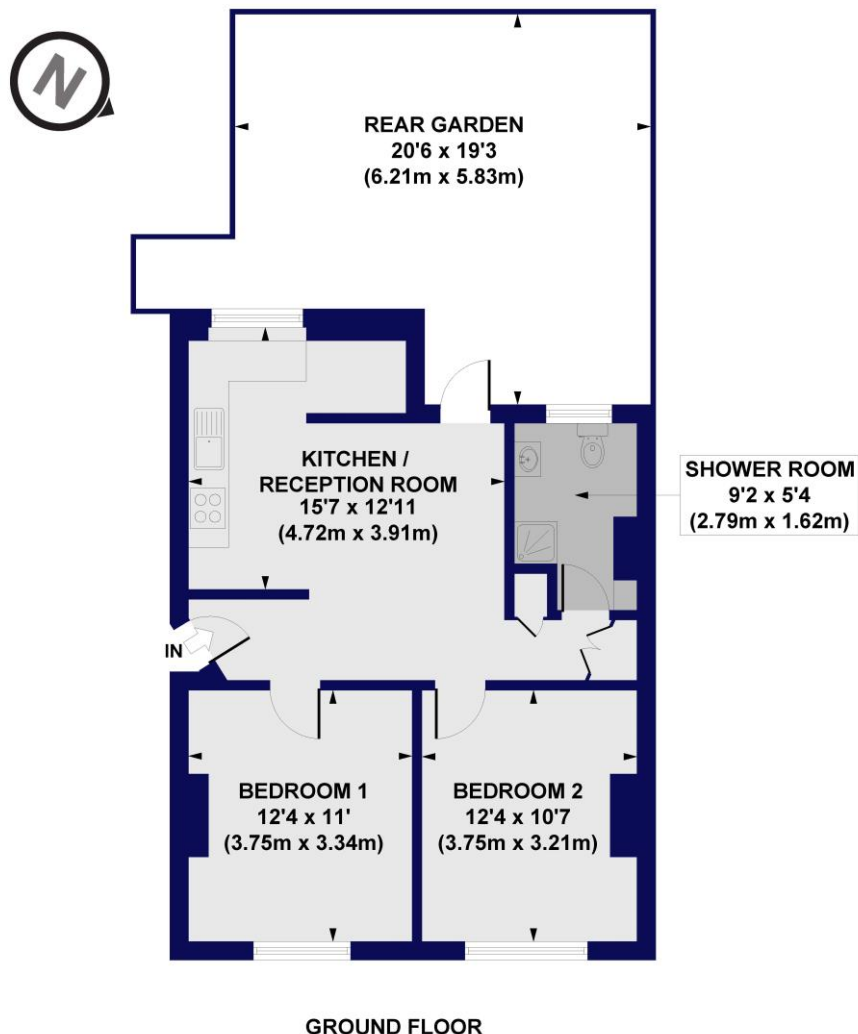
Transport won't be an issue with Shadwell station only 0.3 miles away which has access to the DLR and Overground Windrush Line. The property is also offered chain-free which is added bonus.

Winkworth



Winkworth

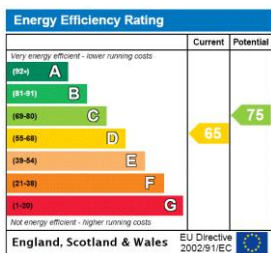
Coburg Dwellings, Hardinge Street, E1
 Approx. Gross Internal Floor Area 604 sq. ft / 56.14 sq. m



All measurements of walls, doors, windows, fittings and appliances, including their size and location, are shown as standard sizes and do not constitute any warranty or representation by the seller, their agent or CP Creative. Any intending purchaser must satisfy himself by inspection or otherwise as to the correctness of the information contained in these plans. This plan is for illustrative purposes only and should be used as such by any prospective purchasers.

Winkworth

This floorplan is for illustration purposes only and is not to scale. The position and size of doors, windows, appliances and other features are approximate.



Shoreditch | 020 7749 7650 | shoreditch@winkworth.co.uk

Winkworth

winkworth.co.uk

See things differently

Winkworth wishes to inform prospective buyers and tenants that these particulars are a guide and act as information only. All our details are given in good faith and believed to be correct at the time of printing but they don't form part of an offer or contract. No Winkworth employee has authority to make or give any representation or warranty in relation to this property. All fixtures and fittings, whether fitted or not are deemed removable by the vendor unless stated otherwise and room sizes are measured between internal wall surfaces, including furnishings.