



ALFRED CLOSE, W4
£925,000 FREEHOLD

A WELL-PRESENTED TOWNHOUSE WITHIN THE HEART OF CHISWICK

Chiswick | 020 8994 7096 | chiswick@winkworth.co.uk

Winkworth

for every step...

winkworth.co.uk



DESCRIPTION:

A well-presented townhouse ideally positioned just moments from Chiswick High Road with well-proportioned accommodation over three storeys.

The ground floor comprises of a bright and airy 'L' shaped kitchen/family room with French doors giving direct access to the low maintenance rear garden plus a door to the integral garage. Stairs from the entrance hall lead to the first floor with an elegant lounge to the first floor, boasting front aspect French doors to a Juliet balcony, plus a rear aspect window and built in book shelving. There is also a good size storage cupboard and useful WC on this floor. The stairs from the first-floor landing lead up to the second floor with the principle bedroom boasting an en-suite bathroom. Bedroom two is a good sized single and there is also a family bathroom and a further walk-in storage cupboard on this floor.

The accommodation offers scope to re-configure and the house itself has been well maintained.

With off street parking and landscaped communal gardens, Alfred Close is an attractive development just off of Chiswick High Road, close to the sought after Belmont Primary School.

Moments from Chiswick Park Tube and within half a mile from Turnham Green Tube and Gunnersbury Tube and Overground station (Zone 2). Offered with no onward chain.

ACCOMMODATION

Freehold

2 Bedrooms

2 Reception Rooms

2 Bathrooms

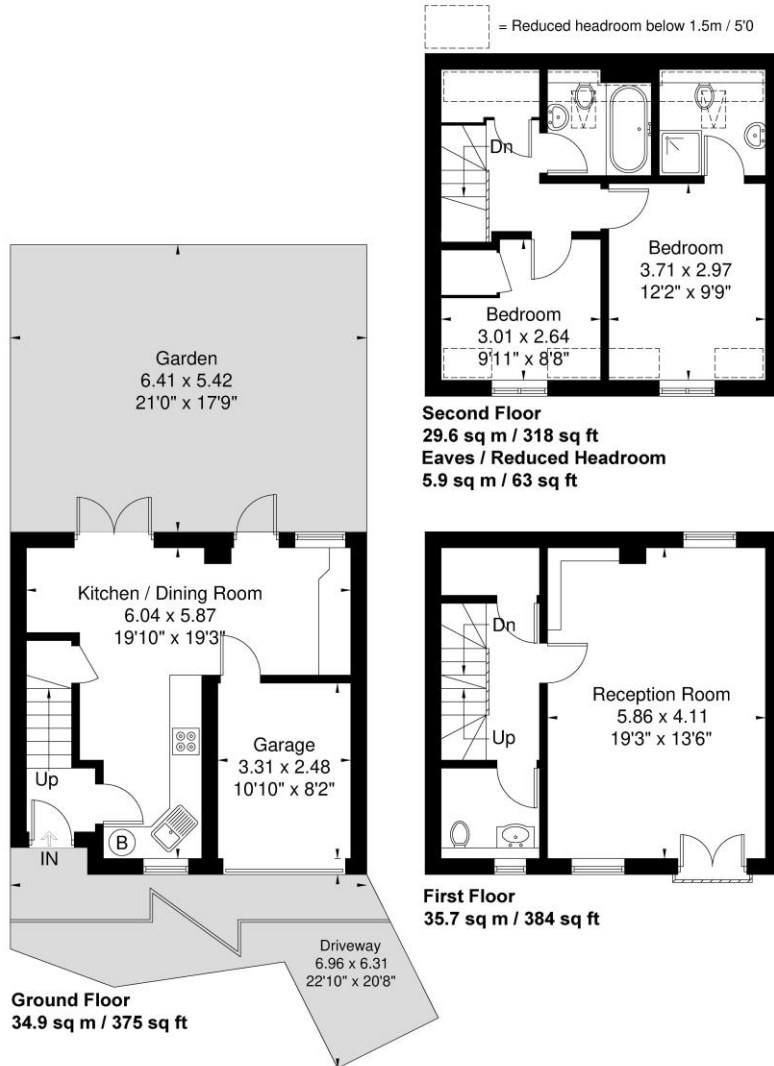
Terraced, Garden

Off Street Parking



Alfred Close

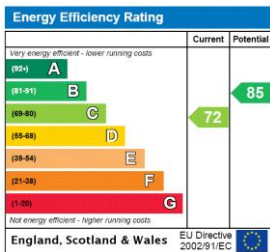
Approximate Gross Internal Area = 78.9 sq m / 849 sq ft
 Eaves Storage / Reduced Headroom = 5.9 sq m / 63 sq ft
 Total = 84.8 sq m / 912 sq ft



Winkworth

Although every attempt has been made to ensure accuracy, all measurements are approximate.
 The floorplan is for illustrative purposes only and not to scale.
 © www.perspective.co.uk

This floorplan is for illustration purposes only and is not to scale. The position and size of doors, windows, appliances and other features are approximate.



Chiswick | 020 8994 7096 | chiswick@winkworth.co.uk



for every step...

winkworth.co.uk

Winkworth wishes to inform prospective buyers and tenants that these particulars are a guide and act as information only. All our details are given in good faith and believed to be correct at the time of printing but they don't form part of an offer or contract. No Winkworth employee has authority to make or give any representation or warranty in relation to this property. All fixtures and fittings, whether fitted or not are deemed removable by the vendor unless stated otherwise and room sizes are measured between internal wall surfaces, including furnishings.