



MITCHAM ROAD, SW17  
OIEO £350,000 LEASEHOLD

## TWO BEDROOM APARTMENT WITH A PRIVATE BALCONY

Tooting | 020 8767 5221 | [tooting@winkworth.co.uk](mailto:tooting@winkworth.co.uk)

**Winkworth**

for every step...

[winkworth.co.uk](http://winkworth.co.uk)





## DESCRIPTION:

A well presented, bright, and spacious two-bedroom flat that offers an inviting open-plan living experience. The property features a integrated kitchen that seamlessly flows into the reception room, which opens onto a private terrace.

Mitcham Road, located in the SW17 postcode of Tooting, South West London, is a familiar road in the vibrant London Borough of Wandsworth. The street benefits from excellent transport links. Tooting Broadway Station (0.6 miles) on the Northern Line is nearby, providing quick connections to central London, while Tooting National Rail Station (0.1 miles) offers rail services towards London Bridge and Wimbledon. A variety of bus routes also serve the area.

Well-positioned for access to a range of local amenities, including independent shops, cafes, and supermarkets. Tooting Market and the vibrant high street offer a variety of global cuisines. Just a short walk from Mitcham Road, Tooting Bec Common provides ample green space for outdoor activities, as well as the famous Tooting Bec Lido, one of the largest outdoor pools in the UK.

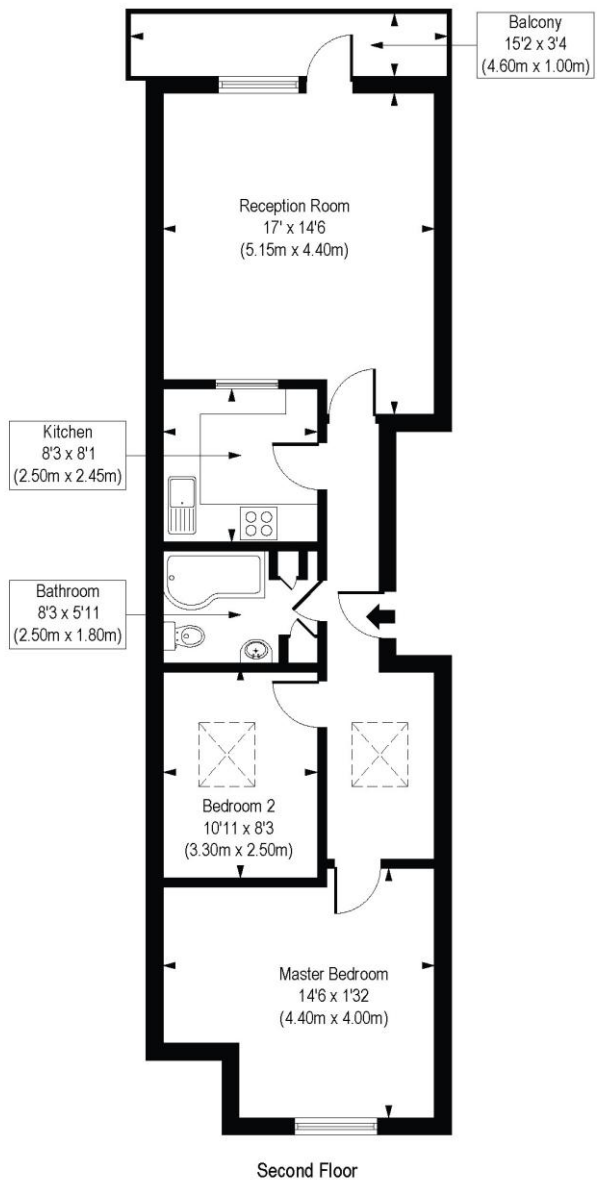
Wandsworth Council Tax Band: C





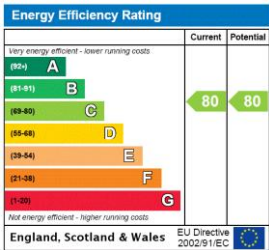
# Mitcham Road, SW17

Approx. Gross Internal Floor Area 723 sq. ft / 67.17 sq. m



COMPLIANT WITH RICS CODE OF MEASURING PRACTICE. Floorplan is for illustrative purposes only and is not to scale. Every attempt has been made to ensure the accuracy of the floorplan shown, however all measurements, fixtures, fittings and data shown are an approximate interpretation for illustrative purposes only. Liability for errors, omissions or mis-statement through negligence or otherwise is hereby excluded.

This floorplan is for illustration purposes only and is not to scale. The position and size of doors, windows, appliances and other features are approximate.



Tooting | 020 8767 5221 | [tooting@winkworth.co.uk](mailto:tooting@winkworth.co.uk)

# Winkworth

for every step...

[winkworth.co.uk](http://winkworth.co.uk)

Winkworth wishes to inform prospective buyers and tenants that these particulars are a guide and act as information only. All our details are given in good faith and believed to be correct at the time of printing but they don't form part of an offer or contract. No Winkworth employee has authority to make or give any representation or warranty in relation to this property. All fixtures and fittings, whether fitted or not are deemed removable by the vendor unless stated otherwise and room sizes are measured between internal wall surfaces, including furnishings.