



Ramsdean Road, Hampshire, GU32

Guide Price: £1,350,000 *Freehold*



In an idyllic spot, a detached house accessed by a long drive in a plot of approximately 2.2 acres of land. NO ONWARD CHAIN.

KEY FEATURES

- Delightful views over the surrounding countryside
- Detached period cottage
- Potential to improve (STPP)
- In all, approximately 2.2 acres
- No onward chain



Petersfield

01730 267274 | petersfield@winkworth.co.uk

Winkworth

for every step...



DESCRIPTION

The property is a pretty, detached period cottage with brick and flint elevations under a slate roof and accommodation over two floors. The layout can be seen in the floorplan and of particular note is the wonderful reception space with plenty of windows ensuring light flows through the accommodation. Outside, the house is approached by a long drive leading to a gravel parking area and a detached garage. The main portion of the garden is on the south side of the house and is largely laid to lawn with a variety of mature shrubs, borders and hedging and on the west side of the house is a small paddock. In all, the property lies in a plot of approximately 2.2 acres. The current owners have been at the house for the past 35 years or so and you can see why they've been settled for such a long time and whilst it has been loved, the house would benefit from some alterations and updating.

ACCOMODATION

Main bedroom with dressing room and en suite/ family shower room, separate family bathroom, three further bedrooms (one with an adjoining WC), three reception rooms, kitchen/breakfast room, entrance hall, downstairs cloakroom with WC, utility room, garage, garden and paddock. In all, approximately 2.2 acres.

The driveway is accessed along a public footpath that then continues along the northern boundary of the property. Holmewood Cottage is the only property that this driveway services.

LOCATION

The property is situated in the village of Stroud where there is a popular village primary school and pub. Petersfield is less than two miles to the east and offers a variety of amenities in a bustling town centre. Shops include Waitrose, M&S Food and Tesco and there are numerous boutiques, cafes and further shops. The train station provides a direct service to London Waterloo to the north (in approximately an hour) and Portsmouth to the south. The tunnel at Hindhead provides congestion free travel north along the A3 to Guildford and London. The area has many active clubs and societies with golf available at Petersfield and Liphook, horse and motor racing at Goodwood, polo at Cowdray Park and sailing along the South Coast. There are many popular schools locally including The Petersfield School (TPS), Churcher's College, Bedales and Ditcham Park.

DIRECTIONS

From the centre of Petersfield, proceed over the level crossing and pass a garage called Stringers on your right. At the roundabout, take the first exit along Winchester Road and on reaching the large roundabout with the A3, take the third exit signed to Winchester and the A272. After entering Stroud, pass The Seven Stars Public House on your left and then take the first turning on the left signed to Ramsdean. Proceed down Ramsdean Road, passing Stroudfields on your left and take the first turning on your left immediately after Langrish School. The property is situated at the end of this lane.

Petersfield

01730 267274 | petersfield@winkworth.co.uk

Winkworth

for every step...

MATERIAL INFORMATION

Method of sale: Private treaty

Tenure: Freehold

Construction: Brick and tile

Services: Mains electricity, water and drainage. Oil-fired central heating

Council Tax Band: "G"

EPC rating: "E" (52)

Service Charge: N/A

Ground Rent: N/A

Rights & Easements: The driveway is accessed along a public footpath that then continues along the northern boundary of the property. Please note that the property does not own this access but is the only property that the driveway services.

Flooding: To the best of our knowledge, there has been no internal flooding

Mobile signal: Likely (Ofcom)

Broadband availability: Superfast available (Ofcom)

Parking: Garage and driveway parking

Viewings: Strictly by appointment with Winkworth Petersfield

WHAT3WORDS: ///fulfilled.control.reclining



For more information, scan the QR code or visit the link below



<https://www.winkworth.co.uk/sale/property/PET240061>

Where no figures are shown, we have been unable to ascertain the information. All figures that are shown were correct at the time of printing.

Important Notice

Winkworth for themselves and the Vendors or lessors of this property whose agents they are, give notice that: i) These particulars have been prepared in good faith to give a fair overall view of the property, do not form any part of an offer or contract, and must not be relied upon as statements or representations of fact. ii) Purchasers must rely on their own enquiries by inspections or otherwise on all matters including planning or other consents. iii) The information in these particulars is given without responsibility on the part of Winkworth or their clients. Neither Winkworth nor their employees have any authority to make or give any representations or warranties whatever in relation to this property. iv) Any areas, measurements or distances referred to are given as a guide only and are not precise. Photographs are not necessarily comprehensive nor current; no assumption should be made that any contents shown are included in the sale nor with regards to parts of the property which have not been photographed. v) Nothing in these particulars should be deemed to be a statement that the property is in good structural condition or that any services or equipment are in good working order – nor have Winkworth tested them. All fixtures and fittings, whether fitted or not are deemed removable by the vendor unless stated otherwise and room sizes are measured between internal wall surfaces, including furnishings



Petersfield

01730 267274 | petersfield@winkworth.co.uk

Winkworth

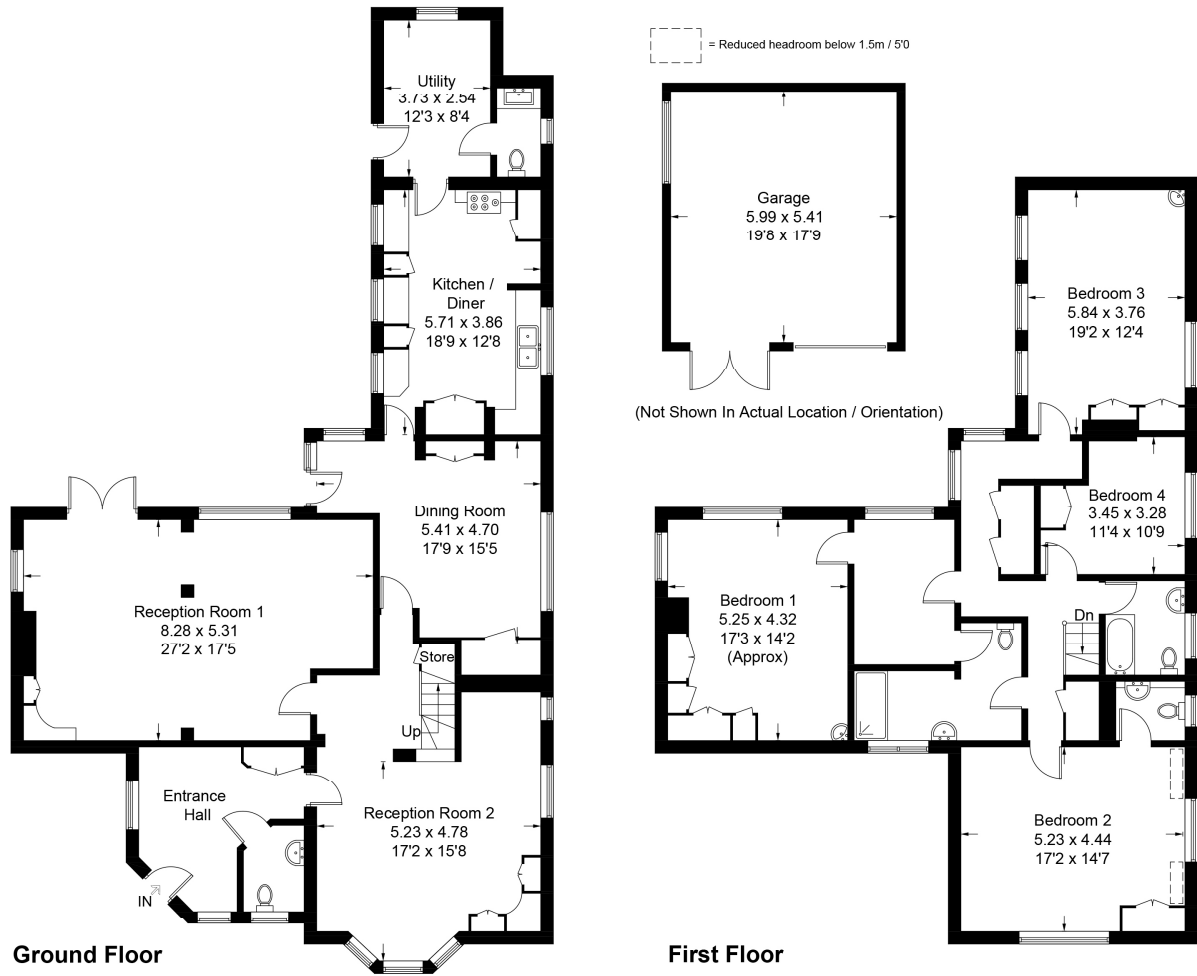
for every step...

Ramsdean Road, GU32

Approximate Gross Internal Area = 276.0 sq m / 2971 sq ft

Garage = 32.4 sq m / 349 sq ft

Total = 308.4 sq m / 3320 sq ft



PRODUCED FOR WINKWORTH ESTATE AGENTS.

Whilst every attempt has been made to ensure the accuracy of the floorplan, measurements of doors, windows and rooms are approximate. These plans are for representation purposes only as defined by RICS Code of Measuring Practice and used as such by any prospective purchaser. Created by Emzo Marketing 2024.

Winkworth wishes to inform prospective buyers and tenants that these particulars are a guide and act as information only. All our details are given in good faith and believed to be correct at the time of printing but they don't form part of an offer or contract. No Winkworth employee has authority to make or give any representation or warranty in relation to this property. All fixtures and fittings, whether fitted or not are deemed removable by the vendor unless stated otherwise and room sizes are measured between internal wall surfaces, including furnishings.

Petersfield

01730 267274 | petersfield@winkworth.co.uk

Winkworth

for every step...