



## ST. OLAF'S ROAD, SW6 £699,950 LEASEHOLD

A well presented two double bedroom garden flat on St Olaf's Road situated in the heart of Munster Village.

Fulham & Parsons Green | 020 7731 3388 | [fulham@winkworth.co.uk](mailto:fulham@winkworth.co.uk)

**Winkworth**

for every step...

[winkworth.co.uk](http://winkworth.co.uk)





## DESCRIPTION

This well maintained flat spans just shy of 800 Sq. Ft. and benefits from a light and bright sitting room. There is a separate kitchen that has a good balance of wall and base units that leads onto the conservatory, an ideal space for dining. French doors open out to a beautiful patio garden. There are two, good sized, double bedrooms with built in storage cupboard space, one of which has access to the garden. Both bedrooms are served by a tiled shower room.

St. Olaf's Road runs off Munster Road with its variety of local shops and restaurants. Fulham Road and Parsons Green underground station are within easy walking distance.



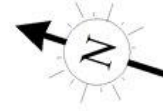




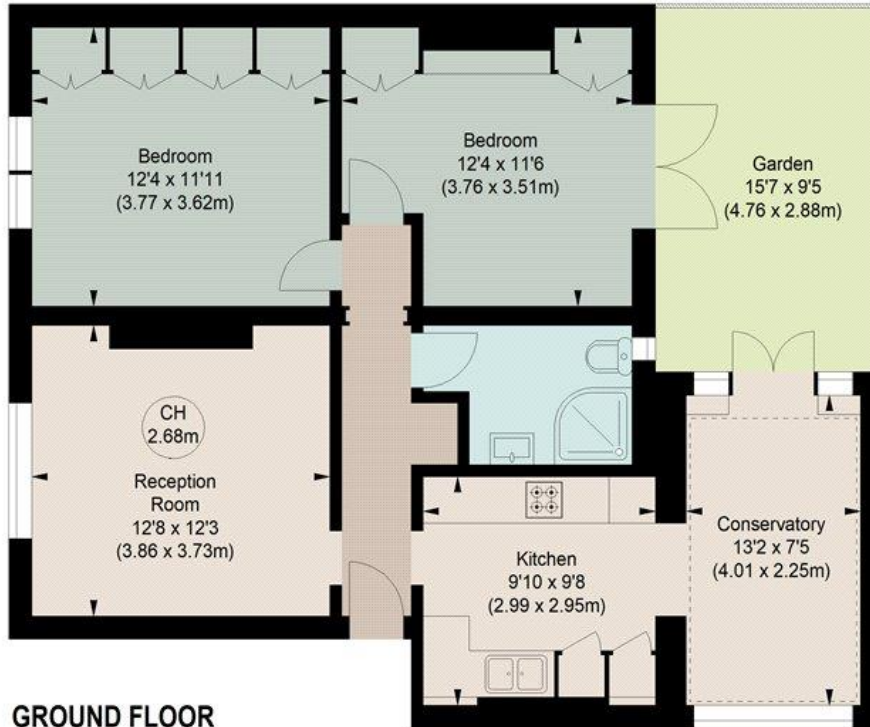


## ST OLAF'S ROAD, SW6

Approximate gross internal area  
794 sq ft / 73.76 sq m



Key :  
CH - Ceiling Height



### GROUND FLOOR

The floor plan is not to scale and measurements and areas shown are approximate and therefore should be used for illustrative purposes only. The plan has been prepared in accordance with the RICS code of Measuring Practice and whilst we have confidence in the information produced, it must not be relied on. If there is any aspect of particular importance, you should carry out or commission your own inspection of the property.

This floorplan is for illustration purposes only and is not to scale. The position and size of doors, windows, appliances and other features are approximate.

**Tenure:** Leasehold

**Term:** 990 years

**Service Charge:** £2018.63 per annum

**Ground Rent:** peppercorn rent

**Council Tax Band:** E

Where no figures are shown, we have been unable to ascertain the information. All figures that are shown were correct at the time of printing.

Fulham & Parsons Green | 020 7731 3388 | fulham@winkworth.co.uk

**Winkworth**

for every step...

[winkworth.co.uk](http://winkworth.co.uk)

Winkworth wishes to inform prospective buyers and tenants that these particulars are a guide and act as information only. All our details are given in good faith and believed to be correct at the time of printing but they don't form part of an offer or contract. No Winkworth employee has authority to make or give any representation or warranty in relation to this property. All fixtures and fittings, whether fitted or not are deemed removable by the vendor unless stated otherwise and room sizes are measured between internal wall surfaces, including furnishings.