



SQUIRES LANE, FINCHLEY, LONDON, N3
£392,000 SHARE OF FREEHOLD

A WELL-PRESENTED ONE BEDROOM GROUND FLOOR GARDEN FLAT

Finchley | 020 8349 3388 | finchley@winkworth.co.uk



Winkworth

DESCRIPTION:

STAMP DUTY FREE FOR FIRST TIME BUYERS!

We are pleased to offer this well-presented one bedroom ground floor flat conveniently located for Finchley Central underground, shopping facilities, Outstanding Ofsted Rated Primary Schools, Victoria Park and the Grade II Listed Stephens House & Gardens. The property has been well maintained with period features throughout and comprises bright front reception room, kitchen/breakfast room with doors leading to a private rear garden, double bedroom and family bathroom. The property is being sold with a share of the freehold. An internal viewing is highly recommended.

COUNCIL TAX:

Band C

AT A GLANCE

- Set in a period style building
- Ground floor
- Easy access to transport links & amenities
- Front reception room
- Kitchen/breakfast room
- One double bedroom
- Private rear garden
- Share of freehold



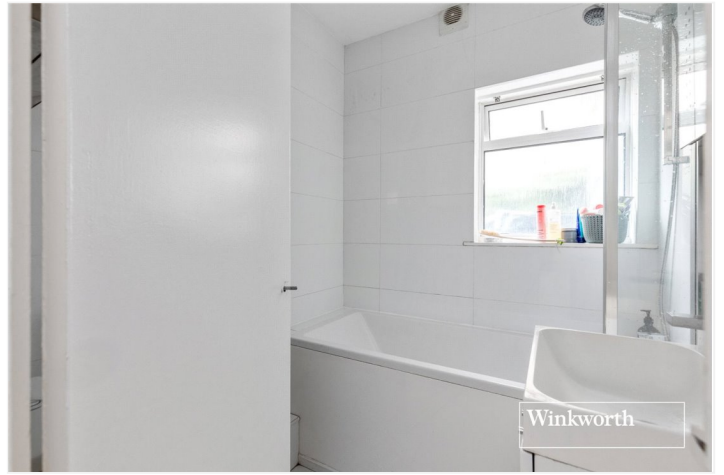
Winkworth



Winkworth



Winkworth



Winkworth



Winkworth



Winkworth

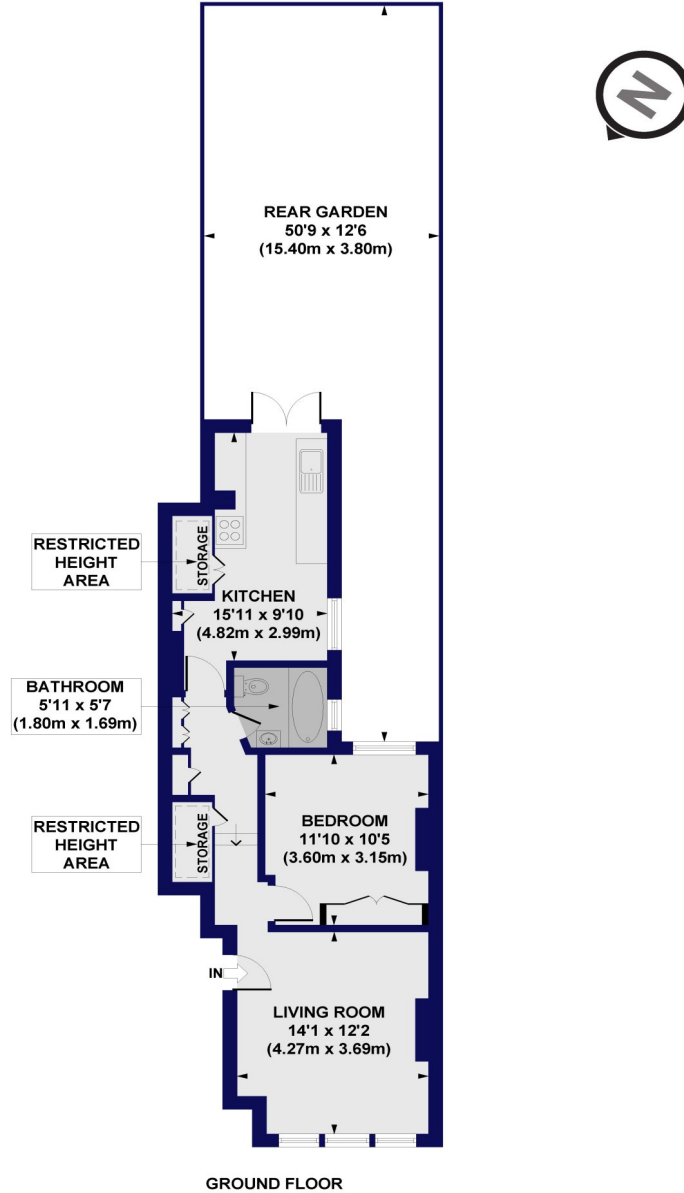


Winkworth

Squires Lane, N3

Approx. Gross Internal Floor Area 558 sq. ft / 51.84 sq. m (Including Restricted Height Area)

Approx. Gross Internal Floor Area 526 sq. ft / 48.86 sq. m (Excluding Restricted Height Area)



All measurements of walls, doors, windows, fittings and appliances, including their size and location, are shown as standard sizes and do not constitute any warranty or representation by the seller, their agent or CP Creative. Any intending purchaser must satisfy himself by inspection or otherwise as to the correctness of the information contained in these plans. This plan is for illustrative purposes only and should be used as such by any prospective purchasers.

