



**CAMBRIDGE COURT, EARLHAM STREET, COVENT GARDEN, LONDON, WC2H
£535,000 LEASEHOLD**

A LIGHT AND ELEGANT ONE BEDROOM APARTMENT IN A BEAUTIFULLY AND DISCREETLY POSITIONED DEVELOPMENT IN SEVEN DIALS IN THE PRIME HEART OF COVENT GARDEN.

Leasehold: Approx. 91 years remaining | Service Charge: £900 per annum | Ground Rent: Approx. £10 per annum | Council Tax Band: Camden, D £2,011 per annum

West End | 020 7240 3322 | westend@winkworth.co.uk

Winkworth

for every step...

winkworth.co.uk



DESCRIPTION: Cambridge court is a hidden gem. A gated podium development of 17 flats anonymously accessed from Earlam Street in Seven Dials. The flats are arranged around well-maintained communal garden and planting areas. Four minutes from both Covent Garden and Leicester Square Underground stations and five minutes from the Piazza, this bright and comfortable flat provides a wonderful example of Covent Garden living. The stairs from the street take you to the garden level and the flat is accessed by a further set of external stairs. The property is in well-kept condition throughout. There is a small lobby and stairwell leading to the living areas which comprise double bedroom, bathroom, modern kitchen, and reception. The property has been an excellent renter and is currently tenanted so would be a good opportunity for investor or end-user. Most of the contents can be included. Cambridge Court is perfectly positioned for London's Theatre, Restaurant Retail and Legal Quarters. All major underground lines are nearby.



Winkworth

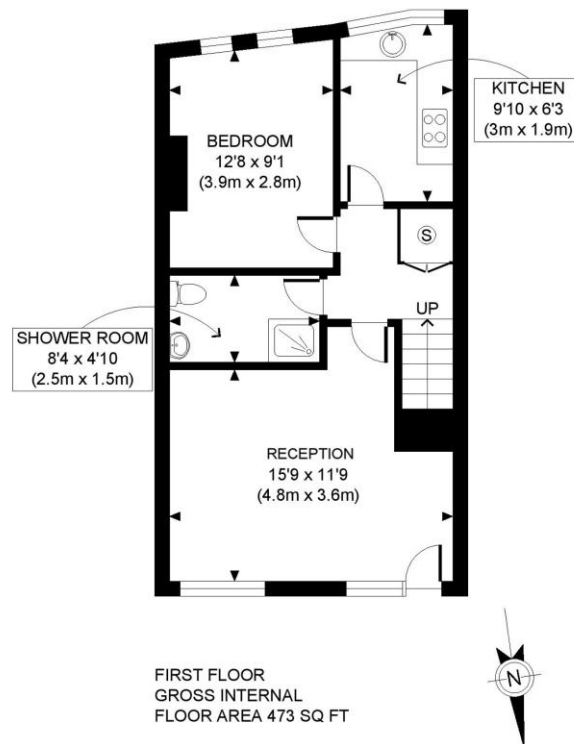
for every step...



Winkworth

for every step...

winkworth.co.uk

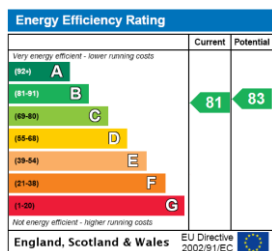


APPROX. GROSS INTERNAL FLOOR AREA: 473 SQ FT/ 44 SQM

PROPERTY PHOTO PLANS.CO.UK
ONE STOP SHOP FOR PROPERTY MARKETING

This plan is for illustrative purposes only and should be used as such by any prospective client. Whilst every attempt has been made to ensure the accuracy of the Floor Plan contained here, measurements of the doors, windows, rooms and any other items are approximate and no responsibility is taken for any errors, omissions, or misstatement. The services, systems and appliances shown have not been tested and no guarantee as to the operability or efficiency can be given.

This floorplan is for illustration purposes only and is not to scale. The position and size of doors, windows, appliances and other features are approximate.



Tenure: Leasehold

Term: 91 year and 0 months

Service Charge: Approx. £900 per annum

Ground Rent: Approx. £10 Annually (subject to increase)

Council Tax Band: D

Where no figures are shown, we have been unable to ascertain the information. All figures that are shown were correct at the time of printing.

Winkworth

for every step...

West End | 020 7240 3322 | westend@winkworth.co.uk

winkworth.co.uk

Winkworth wishes to inform prospective buyers and tenants that these particulars are a guide and act as information only. All our details are given in good faith and believed to be correct at the time of printing but they don't form part of an offer or contract. No Winkworth employee has authority to make or give any representation or warranty in relation to this property. All fixtures and fittings, whether fitted or not are deemed removable by the vendor unless stated otherwise and room sizes are measured between internal wall surfaces, including furnishings.