



PRINCES AVENUE, ACTON, LONDON, W3
OIEO £925,000 FREEHOLD

EPC: D
COUNCIL TAX: E

Ealing & Acton | 0208 896 0123 | ealing@winkworth.co.uk

Winkworth

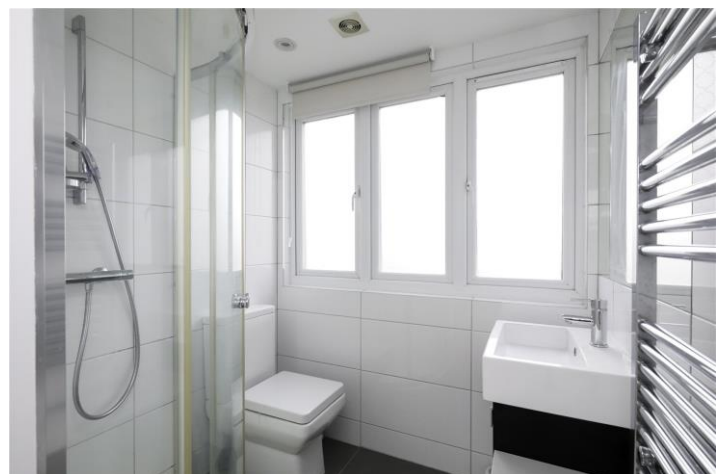
for every step...

winkworth.co.uk



DESCRIPTION:

Wonderful end-of-terrace family home located within close proximity of Gunnersbury Park, International School and Acton Town tube station. The ground floor is comprised of a very large open-plan kitchen and dining room leading onto an immaculate West-facing garden, front living room, and downstairs WC. On the first floor there is a family bathroom, two double bedrooms and good sized single room. The loft conversion provides a large fourth bedroom with en-suite bathroom and great views over the tennis club. Further benefits include an office/studio room to the rear of the property.



Winkworth

for every step...



Winkworth
for every step...

Princess Avenue, W3

Approx. Gross Internal Area 1471 Sq Ft - 136.66 Sq M

(Including Eaves Storage, Restricted Height Area & Excluding Summer House)

Approx. Gross Internal Area 1283 Sq Ft - 119.19 Sq M

(Excluding Eaves Storage, Restricted Height Area & Summer House)

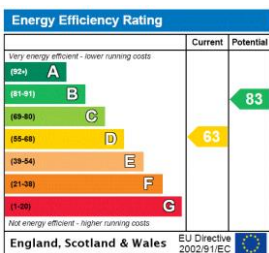
Approx. Gross Internal Area Of Summer House 278 Sq Ft - 25.79 Sq M



Ground Floor
For Illustration Purposes Only - Not To Scale Floor Plan by Mira Nikolova Photography

This floor plan should be used as a general outline for guidance only and does not constitute in whole or in part an offer or contract.
Any intending purchaser or lessee should satisfy themselves by inspection, searches, enquiries and full survey as to the correctness of each statement.
Any areas, measurements or distances quoted are approximate and should not be used to value a property or be the basis of any sale or let.

This floorplan is for illustration purposes only and is not to scale. The position and size of doors, windows, appliances and other features are approximate.



Tenure: Freehold

Term: N/A

Service Charge: N/A

Ground Rent: N/A

Council Tax Band: E

Where no figures are shown, we have been unable to ascertain the information. All figures that are shown were correct at the time of printing.

Ealing & Acton | 0208 896 0123 | ealing@winkworth.co.uk

Winkworth

for every step...

winkworth.co.uk

Winkworth wishes to inform prospective buyers and tenants that these particulars are a guide and act as information only. All our details are given in good faith and believed to be correct at the time of printing but they don't form part of an offer or contract. No Winkworth employee has authority to make or give any representation or warranty in relation to this property. All fixtures and fittings, whether fitted or not are deemed removable by the vendor unless stated otherwise and room sizes are measured between internal wall surfaces, including furnishings.