



SUTHERLAND STREET, SW1V

£375,000

SHARE OF FREEHOLD

At a glance...

- Studio Apartment
- Share of Freehold
- Bright
- Modern
- Great Location
- Council Tax Band: D

Winkworth

for every step...



Energy Efficiency Rating		
	Current	Potential
Very energy efficient - lower running costs		
(92+) A		
(81-91) B		
(69-80) C		75
(55-68) D	64	
(39-54) E		
(21-38) F		
(1-20) G		
Not energy efficient - higher running costs		
England, Scotland & Wales		EU Directive 2002/91/EC

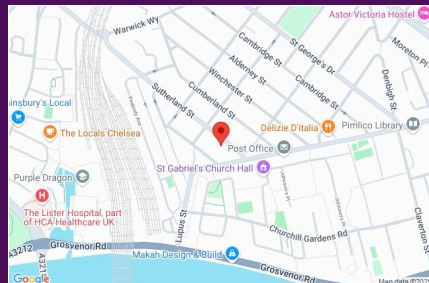
SUTHERLAND STREET, SW1V

£375,000

SHARE OF FREEHOLD

A charming studio flat in this well maintained early Victorian building in Pimlico. The flat is presented beautifully with a smart modern bathroom, excellent built-in kitchen and bright studio room.

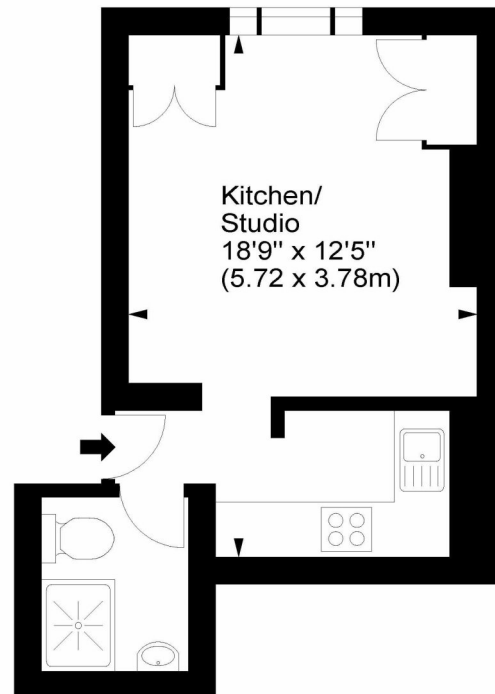
With a share of freehold and low outgoing the property will make a great, low maintenance London pied-a-terre.



winkworth wishes to inform prospective buyers and tenants that these particulars are a guide and act as information only. All our details are given in good faith and believed to be correct at the time of printing but they don't form part of an offer or contract. No winkworth employee has authority to make or give any representation or warranty in relation to this property. All fixtures and fittings, whether fitted or not are deemed removable by the vendor unless stated otherwise and room sizes are measured between internal wall surfaces - including fire-chimneys.

Sutherland Street, SW1

Approx. Gross Internal Area
257 Sq Ft - 23.88 Sq M



Lower Ground Floor

For illustration purposes only. Not to scale.
All measurements are taken and shown at floor level.
www.r3photography.co.uk © Photography / Floor Plans / Lease Plans / EPCs



Pimlico & Westminster

020 7828 1786

pimlico@winkworth.co.uk

winkworth.co.uk/pimlico-westminster

Winkworth

for every step...