



St. George's Square, UK, SW1V

£2,995 PER MONTH

PART FURNISHED

AT A GLANCE

- SUNNY RECEPTION ROOM
- MODERN KITCHEN
- ROOF TERRACE
- TWO BEDROOMS
- DINING AREA
- BATHROOM

Winkworth

for every step...



Energy Efficiency Rating		Current	Potential
Very energy efficient - lower running costs			
(92+)	A		
(81-91)	B		
(69-80)	C		70
(55-68)	D		
(39-54)	E	48	
(21-38)	F		
(1-20)	G		
Not energy efficient - higher running costs			
England, Scotland & Wales		EU Directive 2002/91/EC	

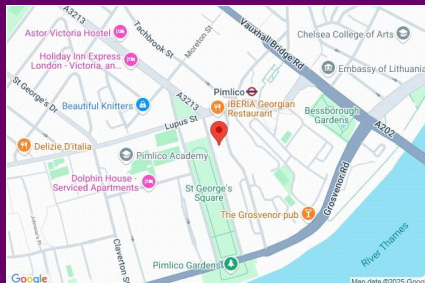
ST. GEORGE'S SQUARE, UK, SW1V

£2,995 PER MONTH
PART FURNISHED

A stunning, top floor, two-bedroom flat on the highly desirable St Georges Square. The first floor comprises of a bright reception room that leads through to the south-west facing roof terrace overlooking the square, separate dining area ideal for dinner parties, separate modern kitchen, and then upstairs to two double bedrooms and a high spec bathroom with storage and shower over bath.

St Georges Square is located well for Pimlico Underground (Victoria Line, 0.2 miles) which is only a short stroll away.

Victoria Station is also close by (0.7 miles) where there is a plethora of transport options, shops and restaurants.

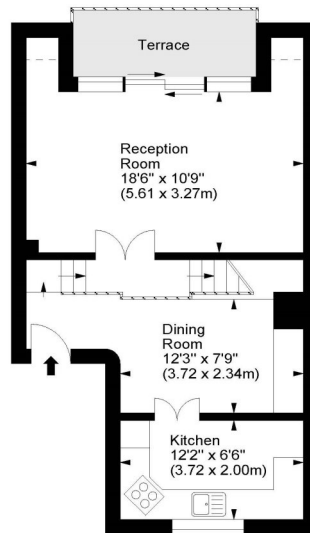


winkworth wishes to inform prospective buyers and tenants that these particulars are a guide and act as information only. All our details are given in good faith and believed to be correct at the time of printing but they don't form part of an offer or contract. No Winkworth employee has authority to make or give any representation or warranty in relation to this property. All fixtures and fittings, whether fitted or not are deemed removable by the vendor unless stated otherwise and room sizes are measured between internal wall surfaces - including fire-screens.

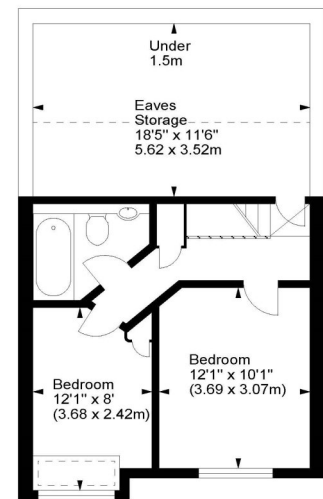
St George's Square, SW1



Approx. Gross Internal Area
798 Sq Ft - 74.13 Sq M
Approx. Eaves Storage Area
211 Sq Ft - 19.60 Sq M
Approx. Total Area
1009 Sq Ft - 93.74 Sq M



Fourth Floor



Fifth Floor

For illustration purposes only. Not to scale.
All measurements are taken and shown at floor level.
www.r3photography.co.uk © Photography / Floor Plans / Lease Plans / EPCs



Pimlico & Westminster | 020 7828 1786 |
pimlico@winkworth.co.uk

winkworth.co.uk/pimlico

Winkworth

for every step...