



TOMPION STREET, LONDON, EC1V
OIEO £450,000 LEASEHOLD

REFURBISHED TO A HIGH STANDARD THROUGHOUT, THIS INCREDIBLY BRIGHT ONE BEDROOM FLAT IS SET ON THE FIRST FLOOR AND IS LOCATED JUST OFF NORTHAMPTON SQUARE, A CHARMING AND QUIET LOCATION IN CENTRAL CLERKENWELL.

Clerkenwell & City | 020 7405 1288 | clerkenwell@winkworth.co.uk

Winkworth

for every step...

winkworth.co.uk



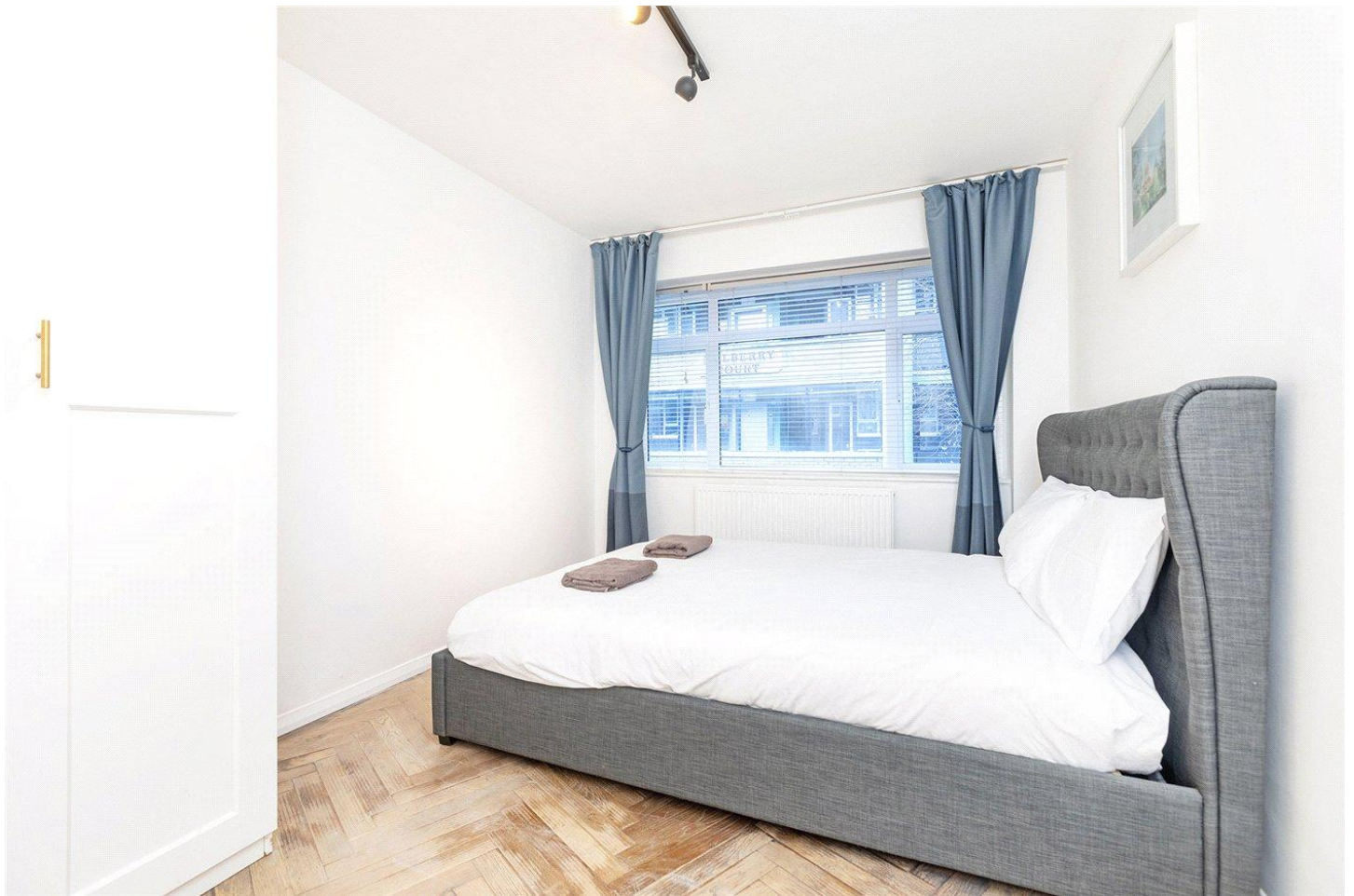
DESCRIPTION:

This deceptively large flat comprises, a dual aspect open-plan reception kitchen room and designated dining area, the modern kitchen is fully fitted with integrated SMEG appliances. The larger than average master bedroom has wall to wall windows and built in wardrobes. Tompion Street is within a short walk from all the amenities of Upper Street and trendy hot spots such as Exmouth Market. Angel, Barbican, Old Street, Farringdon and Kings Cross Stations are all easily accessed. Offered chain-free.



Winkworth

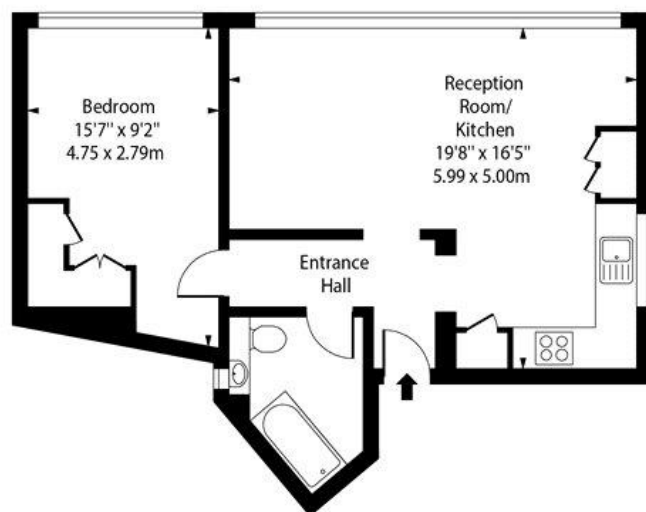
for every step...



Winkworth

for every step...

Tompion Street, EC1V

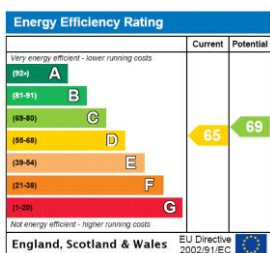


First Floor

Approx Gross Internal Area 516 Sq Ft - 47.94 Sq M

This floor plan should be used as a general outline for guidance only. Any intending purchaser or lessee should satisfy themselves by inspection, searches, enquiries and full survey as to the correctness of each statement. Any areas, measurements or distances quoted are approximate and should not be used to value a property or be the basis of any sale or let.

This floorplan is for illustration purposes only and is not to scale. The position and size of doors, windows, appliances and other features are approximate.



Tenure: Leasehold

Term: 99 year and 3 months

Service Charge: Approx. £683 per annum

Ground Rent: Approx. £10 Annually (subject to increase)

Council Tax Band: D

Where no figures are shown, we have been unable to ascertain the information. All figures that are shown were correct at the time of printing.

Winkworth

for every step...

Clerkenwell & City | 020 7405 1288 | clerkenwell@winkworth.co.uk

winkworth.co.uk

Winkworth wishes to inform prospective buyers and tenants that these particulars are a guide and act as information only. All our details are given in good faith and believed to be correct at the time of printing but they don't form part of an offer or contract. No Winkworth employee has authority to make or give any representation or warranty in relation to this property. All fixtures and fittings, whether fitted or not are deemed removable by the vendor unless stated otherwise and room sizes are measured between internal wall surfaces, including furnishings.