



GIRTON ROAD, LEWISHAM, LONDON, SE26
£1,000,000.00 GUIDE PRICE

Elegant Edwardian home with scenic allotment views, set in a sought-after location near schools and transport. Features four spacious bedrooms, off-street parking, and a beautifully landscaped southwest-facing garden. Inside, enjoy a designer kitchen, serene colour palette, and charming period details like bay windows and traditional shutters. A perfect blend of classic charm and modern convenience!

Forest Hill | foresthill@winkworth.co.uk

Winkworth

for every step...

winkworth.co.uk



DESCRIPTION:

This stunning Edwardian four-bedroom home combines timeless design with modern comforts, offering a beautifully landscaped southwest-facing garden with uninterrupted views of allotments and local wildlife. Positioned within 0.5 miles of local amenities, 0.7 miles to the nearest train station, and surrounded by highly rated schools within a 1-mile radius, the property is both family-friendly and conveniently located. Inside, the architecturally designed interiors feature a calming palette, a spacious German-designed kitchen, and charming period details like bay windows and traditional shutters.



Winkworth

for every step...




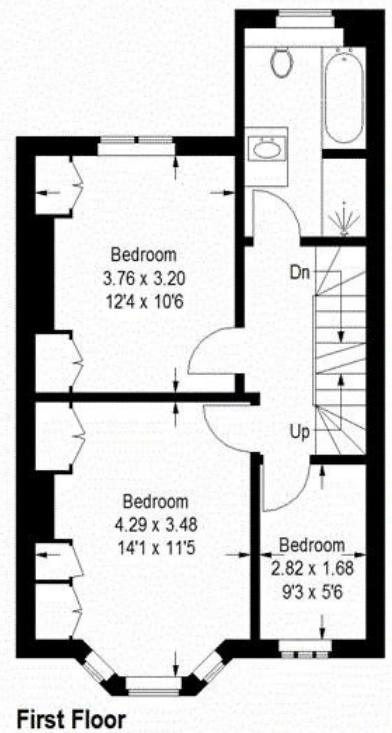
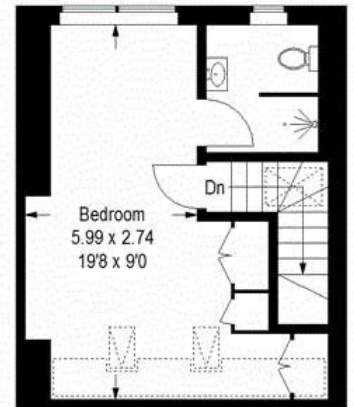
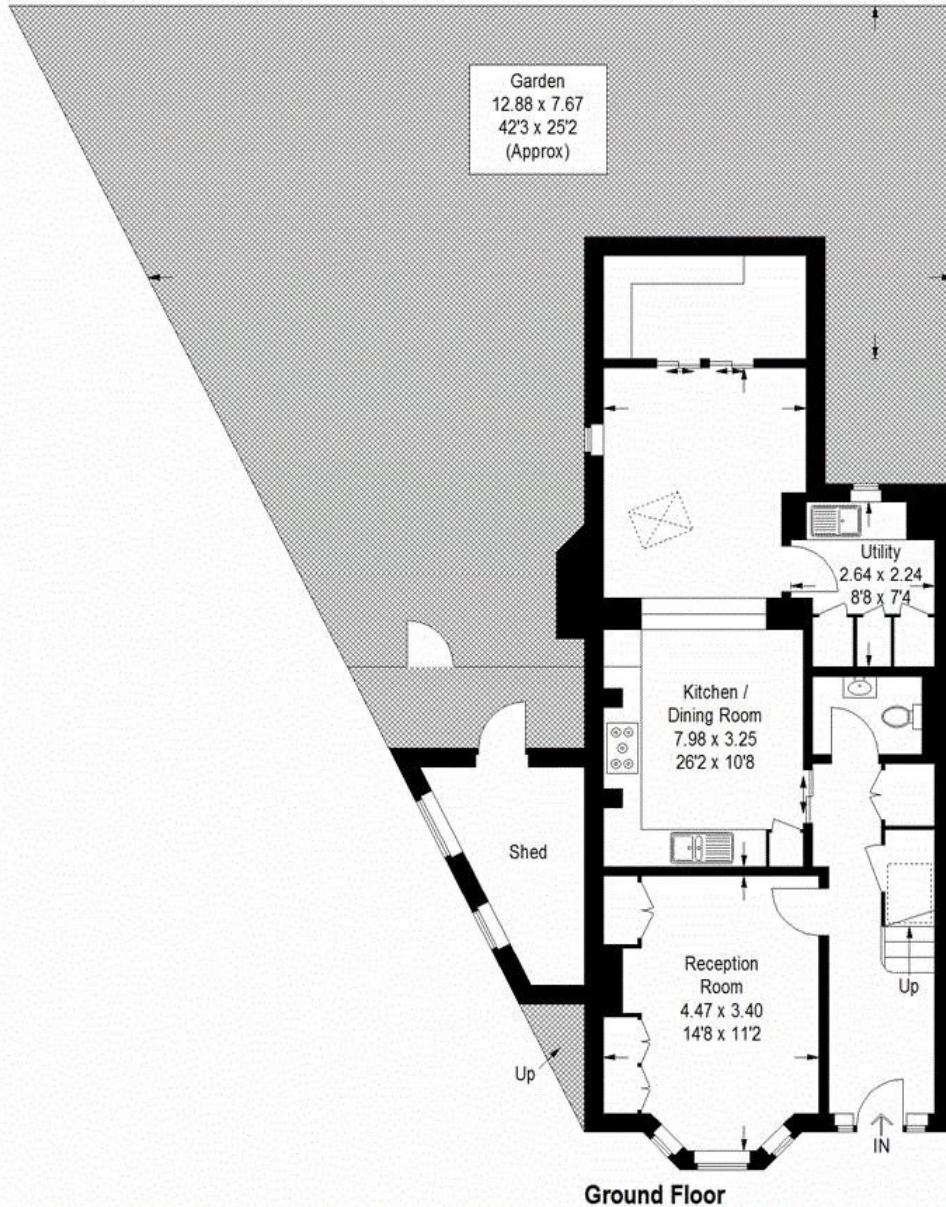
Winkworth

for every step...

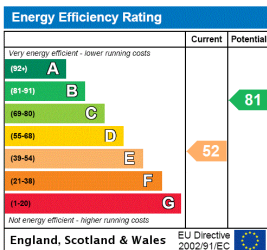
Girton Road, SE26

Approximate Gross Internal Area (Excluding Shed)
141.2 sq m / 1520 sq ft

 = Reduced headroom below 1.5 m / 5'0"



This floorplan is for illustration purposes only and is not to scale. The position and size of doors, windows, appliances and other features are approximate.



COUNCIL TAX BAND- D LOCAL AUTHORITY - Lewisham TENURE- Freehold
SERVICES: Mains Electric, Gas, Drainage & Water. **HEATING:** Gas Central Heating
BROADBAND: Ultrafast, Superfast & Standard Broadband Available. Checked on Openreach Nov 2024.
MOBILE SIGNAL: You are likely to have limited voice coverage with most mobile providers & you are likely to have limited data coverage with most providers



for every step...

NOTICE: Whilst every effort has been made to ensure the accuracy of these sales details, they are for guidance purposes only and prospective purchasers are advised to seek their own professional advice as well as to satisfy themselves by inspection or otherwise as to their correctness. No representation or warranty whatsoever is made in relation to this property by Winkworth or its employees nor do such sales details form part of any offer or contract.

winkworth.co.uk

Winkworth wishes to inform prospective buyers and tenants that these particulars are a guide and act as information only. All our details are given in good faith and believed to be correct at the time of printing but they don't form part of an offer or contract. No Winkworth employee has authority to make or give any representation or warranty in relation to this property. All fixtures and fittings, whether fitted or not are deemed removable by the vendor unless stated otherwise and room sizes are measured between internal wall surfaces, including furnishings.