



Winkworth

QUEEN STREET, WORTHING  
**£440,000 FREEHOLD**

Winkworth





Winkworth

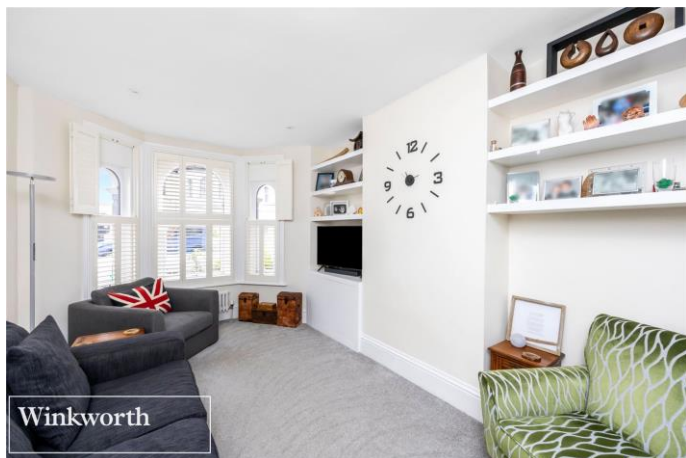
## QUEEN STREET, WORTHING

Winkworth Worthing are delighted to bring to market this family home in a popular location. This period property offers an attractive and well maintained façade with a welcoming front garden and entrance.

The hallway is light and bright and leads into the open plan lounge with its feature bay window and stylish shutters. The second reception area currently being used as a lounge could be used as a formal dining area. The kitchen breakfast room is a fantastic space and offers a range of wall and base units with wooden worktops, new oven and hob as well as space for appliances. Double doors lead to the landscaped low maintenance rear garden which is laid to artificial lawn and paving slabs with some raised beds. In the summer months this would be perfect for entertaining and alfresco dining.

Upstairs are three double bedrooms with the master benefiting from built in wardrobes. The family bathroom is modern and boasts a bath with overhead shower, w.c and wash basin.

The property has been updated by the current owner and throughout the property are newly laid carpets, shutters, column radiators and new windows and doors in 2017.



Winkworth

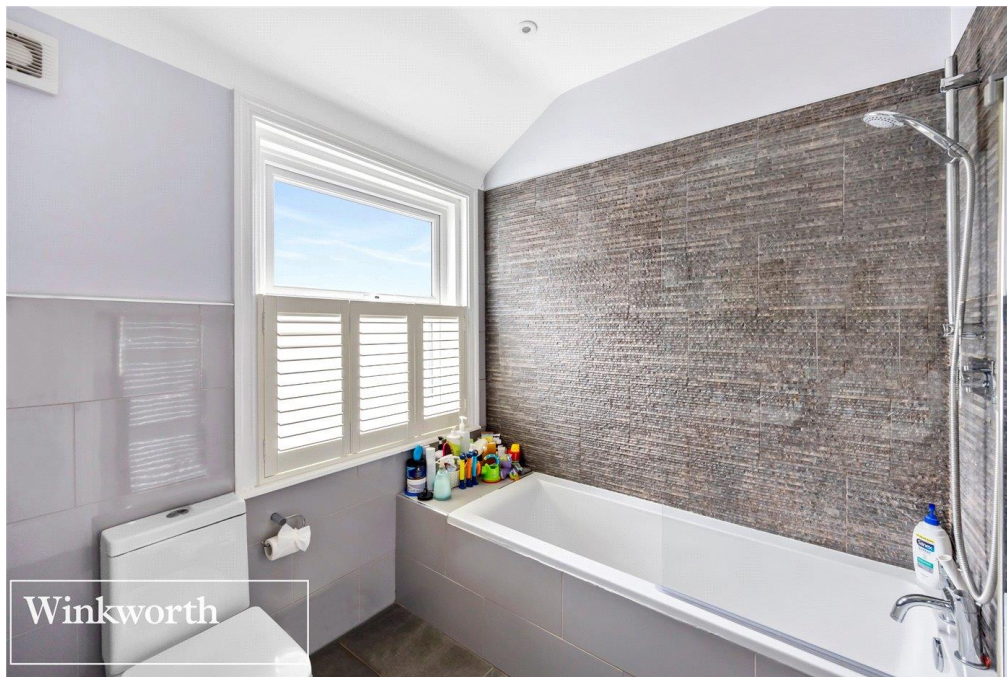


Winkworth

## LOCATION

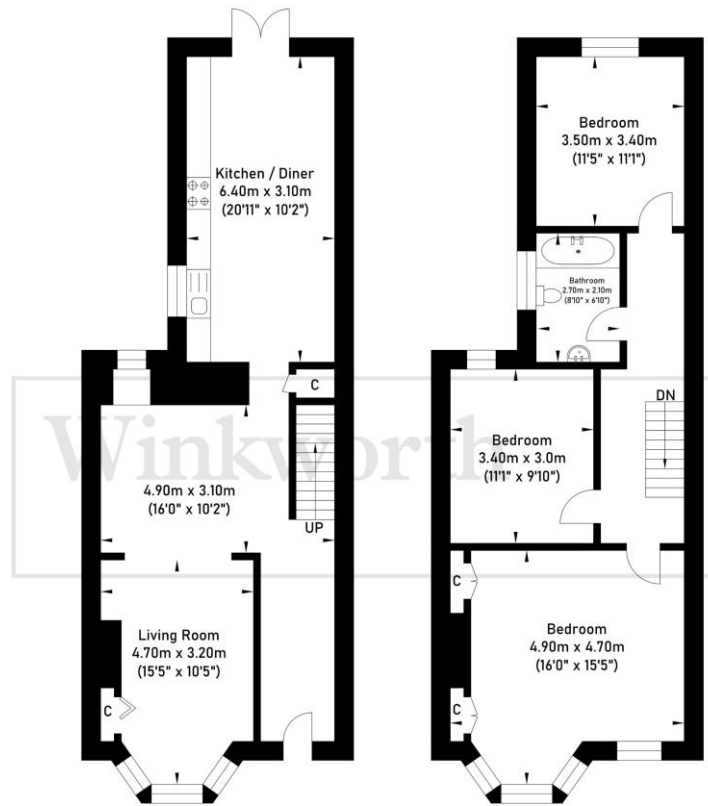
Queen Street is conveniently located within close proximity to local shops, reputable schools and local transport links. Worthing town centre is approximately one mile away and offers an abundance of shops, café's, local restaurants as well as the seafront with its wide promenade and historic pier. Worthing central railway station is a approximately a 15-minute walk and has direct connections to Brighton, London and beyond.







# Queen Street



Ground Floor  
 Approximate Floor Area  
 646.48 sq ft  
 (60.06 sq m)

First Floor  
 Approximate Floor Area  
 646.48 sq ft  
 (60.06 sq m)

Approximate Gross Internal Area = 120.12 sq m / 1292.96 sq ft  
 Illustration For Identification Only - Not To Scale © Winkworth

Worthing | 01903 216219 | [worthing@winkworth.co.uk](mailto:worthing@winkworth.co.uk)



[winkworth.co.uk](http://winkworth.co.uk)

Winkworth wishes to inform prospective buyers and tenants that these particulars are a guide and act as information only. All our details are given in good faith and believed to be correct at the time of printing but they don't form part of an offer or contract. No Winkworth employee has authority to make or give any representation or warranty in relation to this property. All fixtures and fittings, whether fitted or not are deemed removable by the vendor unless stated otherwise and room sizes are measured between internal wall surfaces, including furnishings.