



HENSLOWE ROAD, EAST DULWICH, LONDON, SE22  
OIEO £425,000 LEASEHOLD

## THIS LARGE SPLIT LEVEL ONE BEDROOM FLAT IS SITUATED IN A PRIME EAST DULWICH LOCATION, CLOSE TO PECKHAM RYE AND LORDSHIP LANE.

### DESCRIPTION:

The property offers a large reception, good size double bedroom, modern kitchen and bathroom.

It is well positioned to benefit from easy access into all the local bars, restaurants, shops and cinema on Lordship Lane and as well as the wide open green spaces of Peckham Rye Park. Transport links are provided via either East Dulwich with links to London Bridge or Peckham Rye with overground links should they be required. This is a charming flat in a superb location with early viewing recommended.

### AT A GLANCE

- One Double Bedroom
- Split Level Flat
- Modern Kitchen
- Modern Bathroom
- Great Location

Dulwich | 020 8299 2722 | [dulwich@winkworth.co.uk](mailto:dulwich@winkworth.co.uk)

Tenure Leasehold approx. 948 yrs remaining | Council Tax Band B – London Borough of Southwark | Service Charge None | Ground Rent £30 pa

[winkworth.co.uk](http://winkworth.co.uk)

**Winkworth**

See things differently



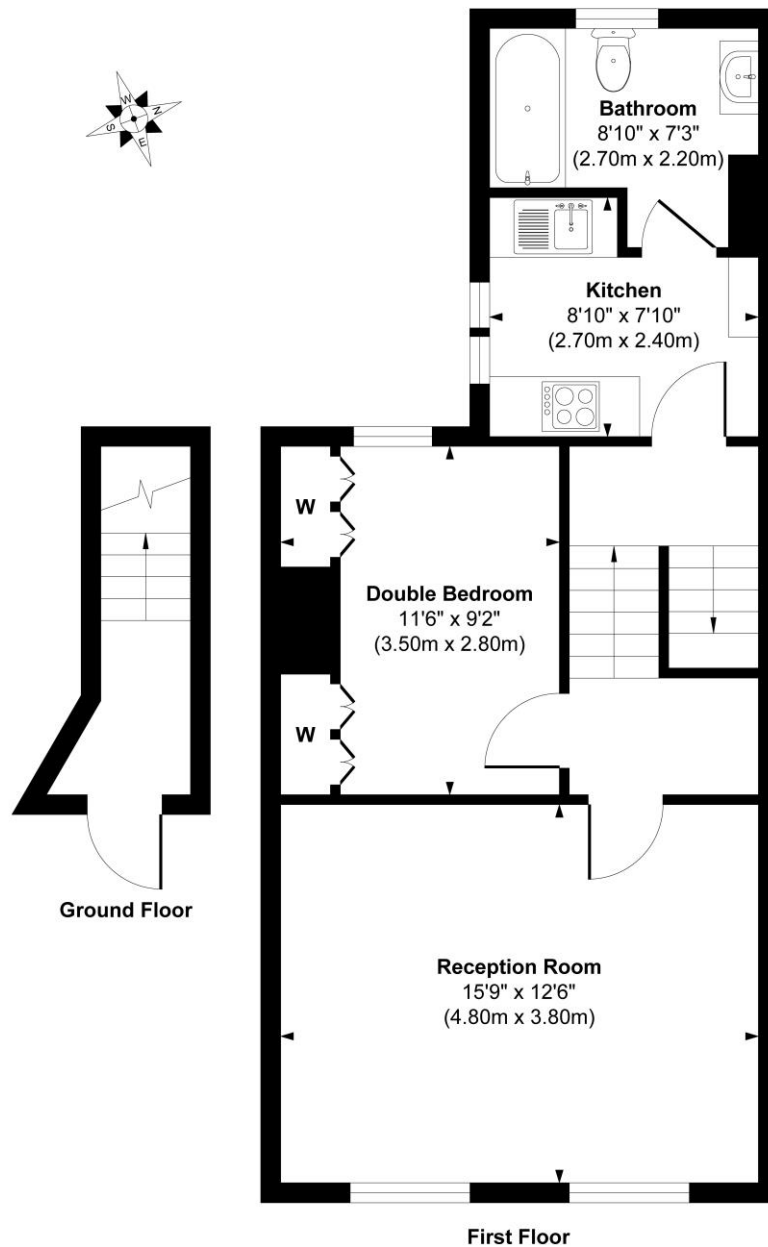








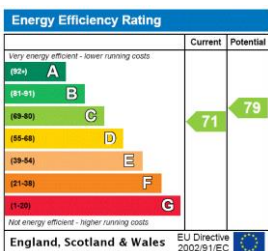
## Henslow Road



**Approx. Gross Internal Floor Area 504 sq. ft / 46.86 sq. m**

Illustration for identification purposes only, measurements are approximate, not to scale.  
Produced by Elements Property

This floorplan is for illustration purposes only and is not to scale. The position and size of doors, windows, appliances and other features are approximate.



Dulwich | 020 8299 2722 | [dulwich@winkworth.co.uk](mailto:dulwich@winkworth.co.uk)

**Winkworth**

[winkworth.co.uk](http://winkworth.co.uk)

See things differently

Winkworth wishes to inform prospective buyers and tenants that these particulars are a guide and act as information only. All our details are given in good faith and believed to be correct at the time of printing but they don't form part of an offer or contract. No Winkworth employee has authority to make or give any representation or warranty in relation to this property. All fixtures and fittings, whether fitted or not are deemed removable by the vendor unless stated otherwise and room sizes are measured between internal wall surfaces, including furnishings.