



**LEE PARK, SE3**  
**£3,250 PER MONTH FURNISHED**

**DESCRIPTION:**

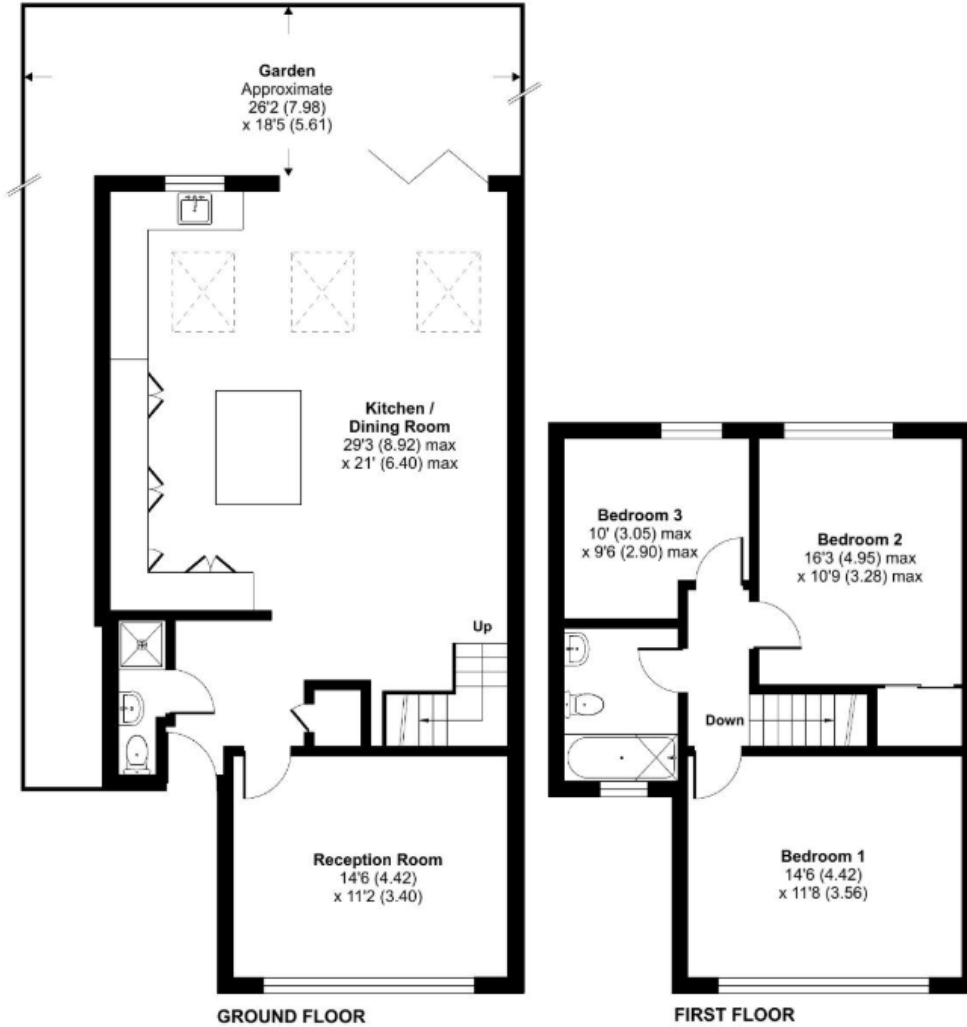
**\*NOT SUITABLE FOR SHARERS\*** This impressive and extended three-bedroom Gough Cooper detached home offers a perfect blend of style, comfort, and convenience with off street parking and a beautifully presented rear garden. Offered furnished and available from 22nd March 2025, your earliest viewing is advised.

**Blackheath** | 0208 8520999 | [blackheath@winkworth.co.uk](mailto:blackheath@winkworth.co.uk)

# Lee Park, London, SE3

Approximate Area = 1329 sq ft / 123.4 sq m

For identification only - Not to scale



This floorplan is for illustration purposes only and is not to scale. The position and size of doors, windows, appliances and other features are approximate.

Energy Efficiency Rating	
Current	Potential
Very energy efficient - lower running costs	
A (92+)	84
B (81-91)	
C (69-80)	
D (55-68)	
E (39-54)	
F (21-28)	
G (1-20)	
Not energy efficient - higher running costs	
England, Scotland & Wales	
EU Directive 2002/91/EC	

Deposit: £3,750.00

Holding Deposit:

Council Tax Band:

Where no figures are shown, we have been unable to ascertain the information. All figures that are shown were correct at the time of printing.