



**NORTHSTAND APARTMENTS, LONDON, N5**  
**£395 PER WEEK FURNISHED**

**A STUNNING ONE BEDROOM FLAT AT OVER 550SQFT THAT OFFERS FANTASTIC VIEWS OVER NORTH LONDON.**

Islington | 0207 354 2480 | [islington@winkworth.co.uk](mailto:islington@winkworth.co.uk)

**Winkworth**

for every step...

[winkworth.co.uk](http://winkworth.co.uk)



## DESCRIPTION:

The property is situated on the fifth floor of the Northstand of the development. Standing at over 550 sqft this spacious high end property is essential for viewing. The development itself offers residents the benefits of a 3.5 acre landscaped gardens, 24 hour concierge and easy access to Fitness Centre/Gym with swimming pool via membership. The Stadium apartments are located moments from Arsenal tube for the Piccadilly line and walking distance to Highbury & Islington station and to the shops, bars and restaurants of Islington's Upper Street. Offered furnished.

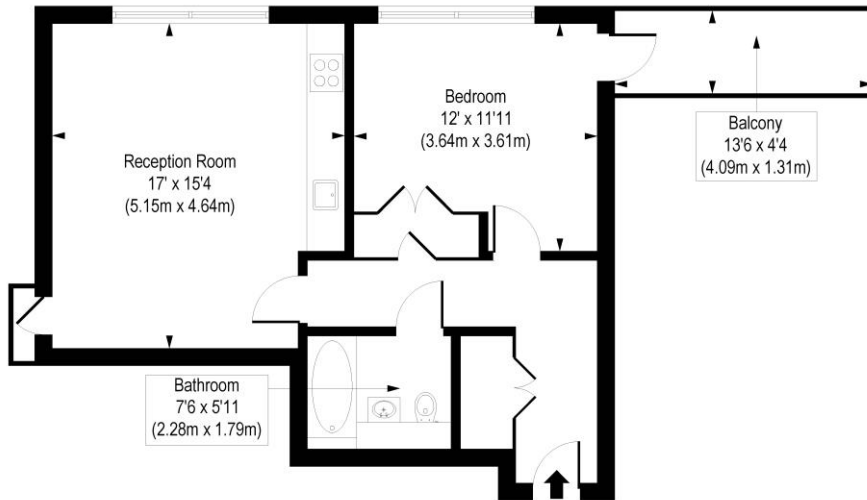
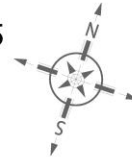
## ACCOMMODATION

1 Bedroom, 1 Reception Room, 1 Bathroom,  
Flat/Apartment, Upper Floor with Lift, Balcony,  
Modern, Town/City, Furnished



# Northstand Apartments, Highbury Stadium Square, N5

Approx. Gross Internal Floor Area 566 sq. ft / 52.61 sq. m



Fifth Floor

COMPLIANT WITH RICS CODE OF MEASURING PRACTICE. Floorplan is for illustrative purposes only and is not to scale. Every attempt has been made to ensure the accuracy of the floorplan shown, however all measurements, fixtures, fittings and data shown are an approximate interpretation for illustrative purposes only. Liability for errors, omissions or mis-statement through negligence or otherwise is hereby excluded.

This floorplan is for illustration purposes only and is not to scale. The position and size of doors, windows, appliances and other features are approximate.

Islington | 0207 354 2480 | [islington@winkworth.co.uk](mailto:islington@winkworth.co.uk)

**Winkworth**

for every step...

[winkworth.co.uk](http://winkworth.co.uk)

Winkworth wishes to inform prospective buyers and tenants that these particulars are a guide and act as information only. All our details are given in good faith and believed to be correct at the time of printing but they don't form part of an offer or contract. No Winkworth employee has authority to make or give any representation or warranty in relation to this property. All fixtures and fittings, whether fitted or not are deemed removable by the vendor unless stated otherwise and room sizes are measured between internal wall surfaces, including furnishings.