



RIDGE CLOSE, HENDON, LONDON, NW4

STARTING GUIDE PRICE £540,000 FREEHOLD

TWO BEDROOM BUNGALOW WITH ONE BEDROOM ANNEX - BEING SOLD VIA SECURE SALE ONLINE BIDDING. TERMS & CONDITIONS APPLY. STARTING BID £540,000.

Kingsbury | 020 8204 0000 | kingsbury@winkworth.co.uk

Winkworth

for every step...

winkworth.co.uk



Winkworth
for every step...

This charming residence offers the perfect opportunity for its new family to create their ideal nest. This bungalow is a true blank canvas featuring a bright and airy modern kitchen, a cosy dining room, comfortable living room, and two well-proportioned bedrooms, along with a contemporary shower room. Externally, the home boasts a delightful garden with a separate annex, perfect for extended family or guests. The annex mirrors the homely atmosphere of the main bungalow, complete with a cozy living room, dining area, kitchenette, double bedroom, and a bathroom. This detached property also benefits from convenient off-street parking and is situated in a peaceful cul de sac location, while still being within close proximity to Hendon's vibrant amenities and excellent transport links. An internal viewing is highly recommended to fully appreciate the potential this home offers.



Winkworth
for every step...



Winkworth
for every step...

Winkworth

for every step...

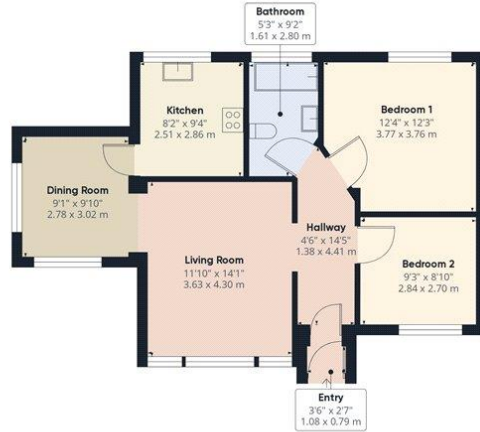


Winkworth

for every step...



Ground Floor Building 1



Ground Floor Building 2

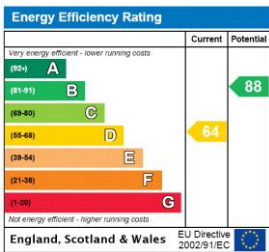
Approximate total area⁽¹⁾
982.1 ft²
91.24 m²

(1) Excluding balconies and terraces

While every attempt has been made to ensure accuracy, all measurements are approximate, not to scale. This floor plan is for illustrative purposes only.
Calculations are based on RICS IPMS 3C standard.

GIRAFFE360

This floorplan is for illustration purposes only and is not to scale. The position and size of doors, windows, appliances and other features are approximate.



Tenure: Freehold

Council Tax Band: E - Barnet

Where no figures are shown, we have been unable to ascertain the information. All figures that are shown were correct at the time of printing.

Kingsbury | 020 8204 0000 | kingsbury@winkworth.co.uk



for every step...

winkworth.co.uk

Winkworth wishes to inform prospective buyers and tenants that these particulars are a guide and act as information only. All our details are given in good faith and believed to be correct at the time of printing but they don't form part of an offer or contract. No Winkworth employee has authority to make or give any representation or warranty in relation to this property. All fixtures and fittings, whether fitted or not are deemed removable by the vendor unless stated otherwise and room sizes are measured between internal wall surfaces, including furnishings.