



## Guildhouse Street, UK, SW1V

£5,250 PER MONTH

UNFURNISHED

### AT A GLANCE

- Terraced House
- Three Bathrooms
- Three Double Bedrooms
- High Specification
- Two Reception Rooms
- Newly Renovated

**Winkworth**

for every step...



Score	Energy rating	Current	Potential
92+	A		
81-91	B		83   B
69-80	C	73   C	
55-68	D		
39-54	E		
21-38	F		
1-20	G		

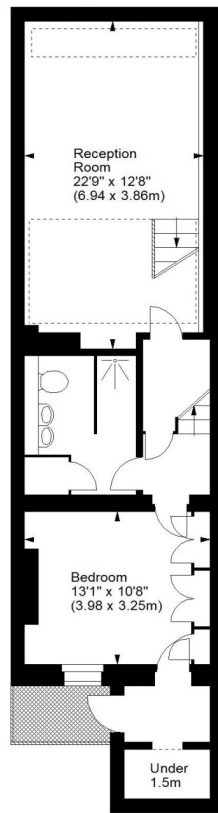
## GUILDHOUSE STREET, UK, SW1V

£5,250 PER MONTH  
UNFURNISHED

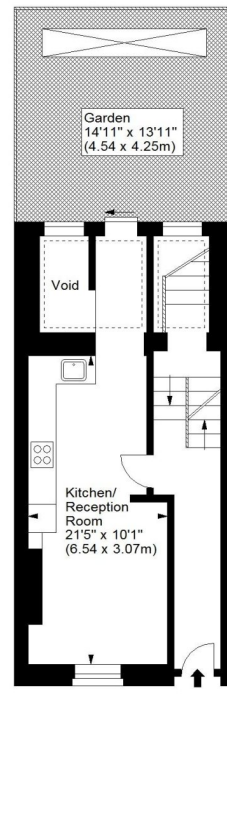
Luxuriously appointed throughout and brand newly redecorated, the home is beautifully arranged over four floors. Accommodation comprises a large reception room which provides plenty of space to dine and entertain and a well specified kitchen with integrated appliances leading through to a separate dining room. The impressive master bedroom is arranged over the top floor and has an abundance of built-in storage and en-suite shower room and there are two further double bedrooms, family bathroom and additional shower room. To the rear of the home there is a private and enclosed garden laid primarily to paved patio.



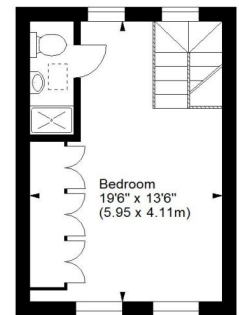
**Guildhouse Street, SW1**  
Approx. Gross Internal Area  
1569 Sq Ft - 145.76 Sq M



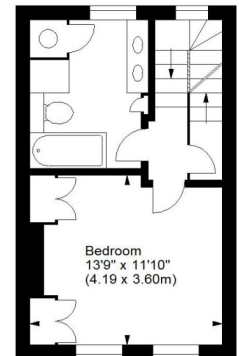
Lower Ground Floor  
(58.86 sq m)



Ground Floor (33.56 sq m)



Second Floor (24.69 sq m)



First Floor (28.65 sq m)

For illustration purposes only. Not to scale.  
All measurements are taken and shown at floor level.  
www.r3photography.co.uk © Photography / Floor Plans / Lease Plans / EPCs



winkworth wishes to inform prospective buyers and tenants that these particulars are a guide and act as information only. All our details are given in good faith and believed to be correct at the time of printing but they don't form part of an offer or contract. No winkworth employee has authority to make or give any representation or warranty in relation to this property. All fixtures and fittings, whether fitted or not are deemed removable by the vendor unless stated otherwise and room sizes are measured between internal wall surfaces, including fireplaces.

Pimlico & Westminster | 020 7828 1786 |  
pimlico@winkworth.co.uk

winkworth.co.uk/pimlico



for every step...