



VERSAILLES ROAD, SE20  
**£1,600 PER MONTH FURNISHED**

## BEAUTIFULLY PRESENTED ONE BEDROOM FLAT TO RENT

Crystal Palace | 02038693222 | [crystalpalace@winkworth.co.uk](mailto:crystalpalace@winkworth.co.uk)

**Winkworth**

for every step...

[winkworth.co.uk](http://winkworth.co.uk)



## DESCRIPTION:

Winkworth is pleased to offer this beautifully presented one bedroom flat on Versailles Road.

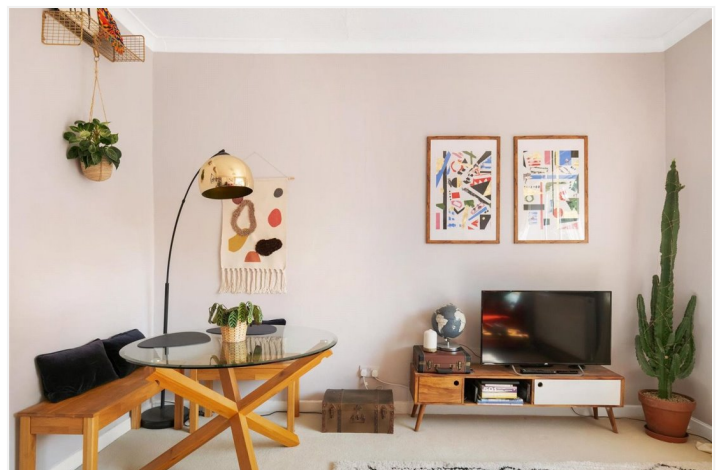
The property comprises entrance hallway, reception room with space to dine, separate fitted modern kitchen, good sized bedroom with great fitted storage and contemporary bathroom.

The property benefits from access to well-maintained communal gardens and also comes with an allocated parking space.

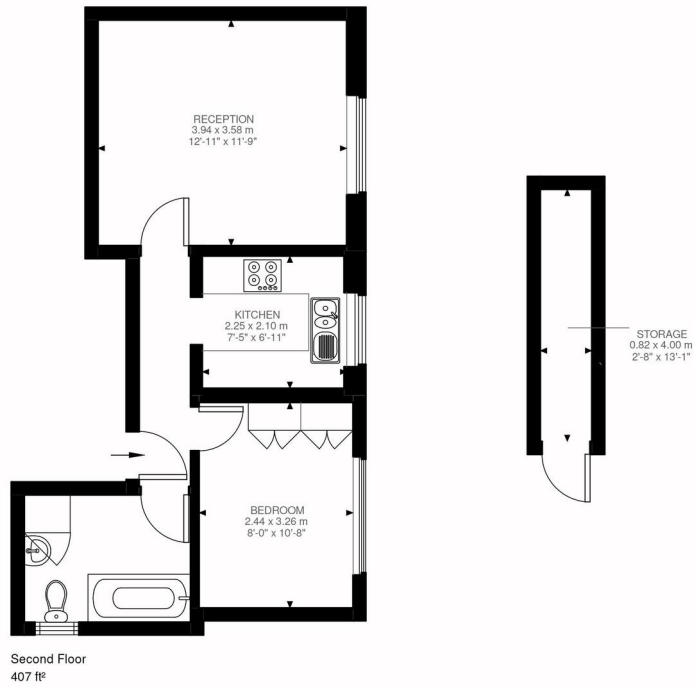
Offered furnished & available early October.

## AT A GLANCE

- One bedroom
- Second floor flat
- Modern kitchen and bathroom
- Reception with space to dine
- Great fitted storage
- Communal gardens
- Allocated parking for one car
- Furnished







Versailles Road, SE20  
Approximate Gross Internal Area  
37.79 SQ.M / 407 SQ.FT  
(EXCLUDING STORAGE)  
STORAGE 3.28 SQ.M / 35 SQ.FT  
INCLUSIVE TOTAL AREA 41.07 SQ.M / 442 SQ.FT

Illustration for identification purposes only. Not to scale.  
Floor Plan Drawn According To RICS Guidelines.

This floorplan is for illustration purposes only and is not to scale. The position and size of doors, windows, appliances and other features are approximate.

Energy Efficiency Rating		Current	Potential
Very energy efficient - lower running costs			
(92)	A		
(81-91)	B		
(69-80)	C		
(55-68)	D	62	73
(39-54)	E		
(21-58)	F		
(1-20)	G		
Not energy efficient - higher running costs			
England, Scotland & Wales		EU Directive 2002/91/EC	

**Deposit:** £0.00

**Holding Deposit:**

**Council Tax Band:**

Where no figures are shown, we have been unable to ascertain the information. All figures that are shown were correct at the time of printing.



Crystal Palace | 02038693222 | crystalpalace@winkworth.co.uk

for every step...

winkworth.co.uk

Winkworth wishes to inform prospective buyers and tenants that these particulars are a guide and act as information only. All our details are given in good faith and believed to be correct at the time of printing but they don't form part of an offer or contract. No Winkworth employee has authority to make or give any representation or warranty in relation to this property. All fixtures and fittings, whether fitted or not are deemed removable by the vendor unless stated otherwise and room sizes are measured between internal wall surfaces, including furnishings.