

REDBOURNE AVENUE, LONDON, N3
£1,750,000 FREEHOLD

A SPACIOUS AND WELL PRESENTED PERIOD STYLE FAMILY HOME SET IN A PRIME LOCATION

Finchley | 020 8349 3388 | finchley@winkworth.co.uk

Winkworth

for every step...

winkworth.co.uk



DESCRIPTION:

Winkworth is proud to present this wonderful double fronted semi-detached period style family home set on a prime and quiet residential turning, ideally located for both Avenue House and Victoria Parks, local library and shops with great transport links, including buses and Finchley Central Tube

This wonderful property is oozing with charm and period features throughout and has been carefully extended to the ground floor to provide excellent living accommodation throughout. This charming home comprises of a large hallway entrance with two reception rooms to the front, a spacious and wonderful open plan kitchen (including a large island) / living / dining area to the rear with beautiful views overlooking a private south facing rear garden with a large patio area, separate utility room and downstairs cloakroom.

The first floor consists of four large bedrooms with an en suite to the primary bedroom and a family bathroom. Further benefits also include further potential for expansion stpp, side access and off-street parking for several cars.

To truly appreciate this wonderful home an internal viewing is highly recommended.

AT A GLANCE

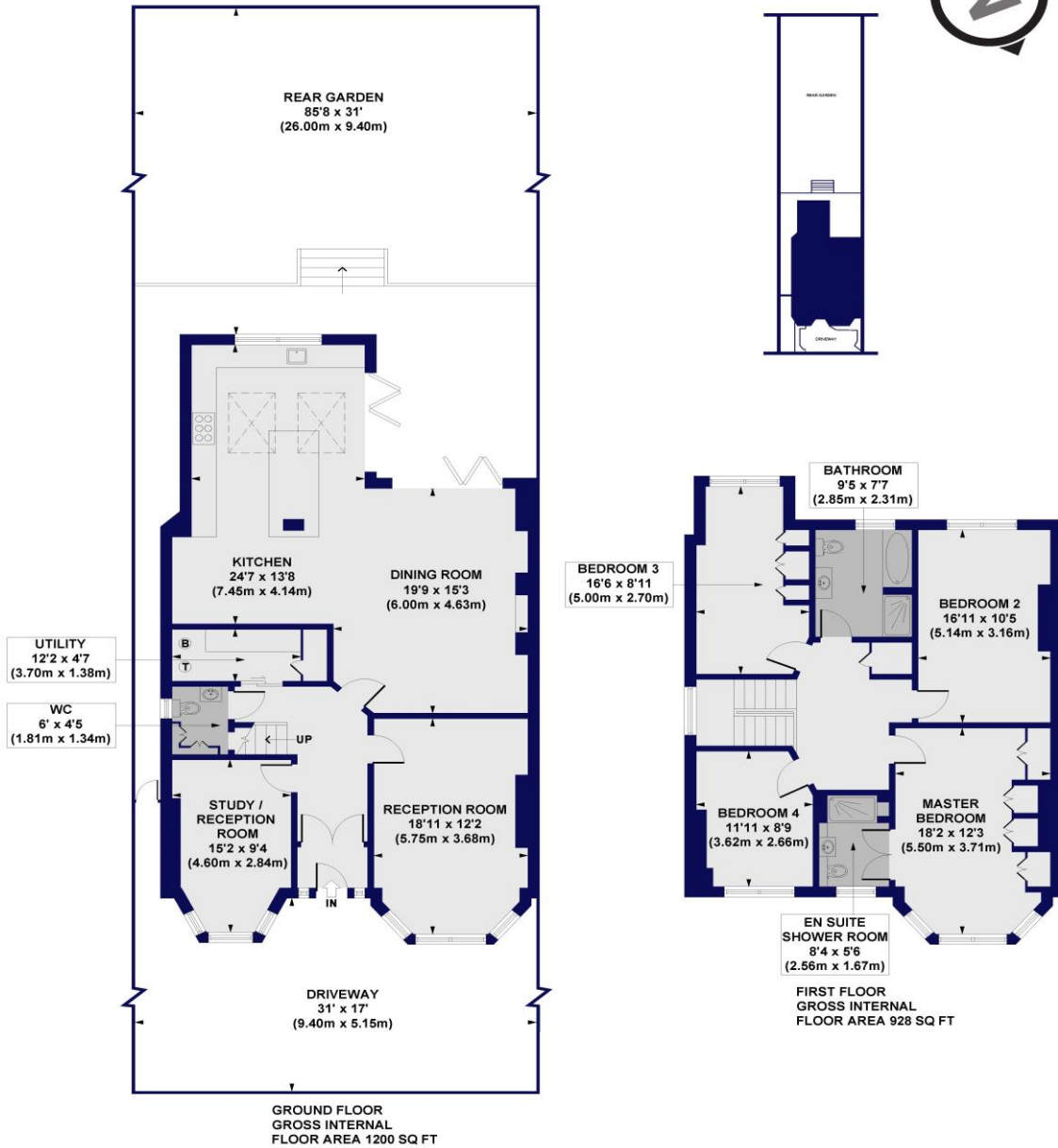
- Double fronted semi-detached family home
- Set on a premier road
- Period Style
- Open plan living to the rear of the property
- Two front reception rooms
- Four spacious bedrooms
- South facing private rear garden
- Potential to extend stpp
- Off street parking





Redbourne Avenue, N3

Approx. Gross Internal Floor Area 2128 sq. ft / 197.69 sq. m



This floorplan is for illustration purposes only and is not to scale. The position and size of doors, windows, appliances and other features are approximate.

All measurements of walls, doors, windows, fittings and appliances, including their size and location, are shown as standard sizes and do not constitute any warranty or representation by the seller, their agent or CP Creative. Any intending purchaser must satisfy himself by inspection or otherwise as to the correctness of the information contained in these plans. This plan is for illustrative purposes only and should be used as such by any prospective purchasers.

Winkworth

EPC

Finchley | 020 8349 3388 | finchley@winkworth.co.uk

Winkworth

for every step...

winkworth.co.uk

Winkworth wishes to inform prospective buyers and tenants that these particulars are a guide and act as information only. All our details are given in good faith and believed to be correct at the time of printing but they don't form part of an offer or contract. No Winkworth employee has authority to make or give any representation or warranty in relation to this property. All fixtures and fittings, whether fitted or not are deemed removable by the vendor unless stated otherwise and room sizes are measured between internal wall surfaces, including furnishings.