



MANOR CLOSE, KINGSBURY, LONDON, NW9  
**£650,000 FREEHOLD**

## CHARMING MID TERRACE HOME IN A LOVELY CUL DE SAC LOCATION

Kingsbury | 020 8204 0000 | [kingsbury@winkworth.co.uk](mailto:kingsbury@winkworth.co.uk)

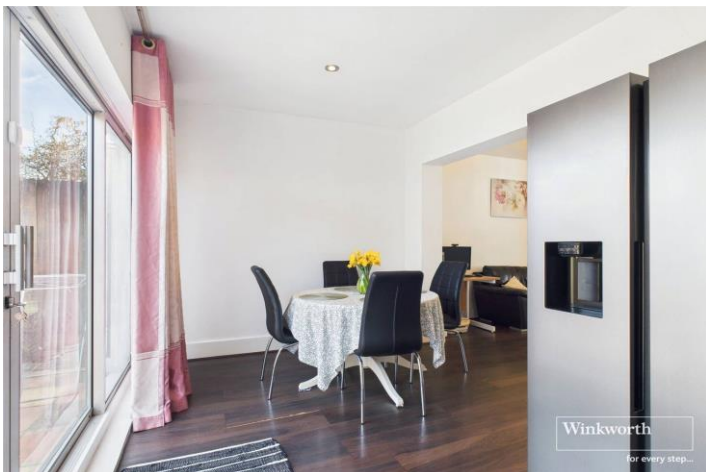
**Winkworth**

for every step...

[winkworth.co.uk](http://winkworth.co.uk)



Proudly maintained and beautifully presented, this delightful three-bedroom mid-terrace home is nestled within a picturesque residential close, just off the Kingsbury Road. Offering a perfect blend of comfort and convenience, the property boasts a bright and airy reception room, seamlessly flowing into a dining area, ideal for both relaxation and entertaining. The modern kitchen provides ample storage. Upstairs, you'll find two double and a one single bedrooms alongside a stylish bathroom. Externally, the home features a well-sized rear garden, offering a private outdoor retreat, while off-street parking adds to the property's practicality. With its enviable location and inviting ambiance, an internal viewing is highly recommended to truly appreciate all this home has to offer.



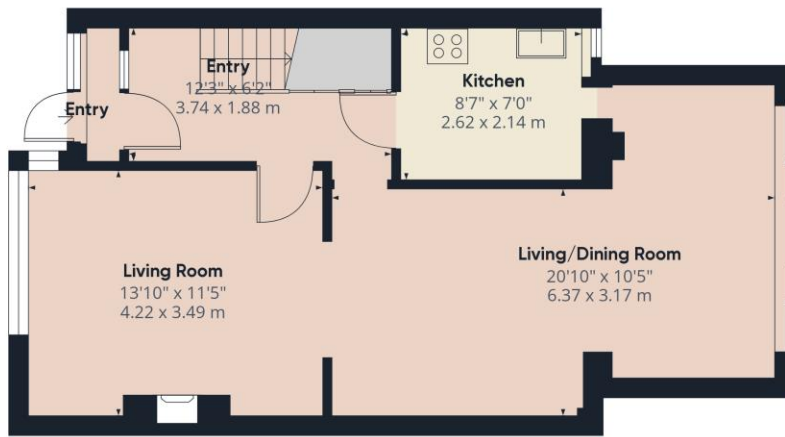
**Winkworth**

for every step...

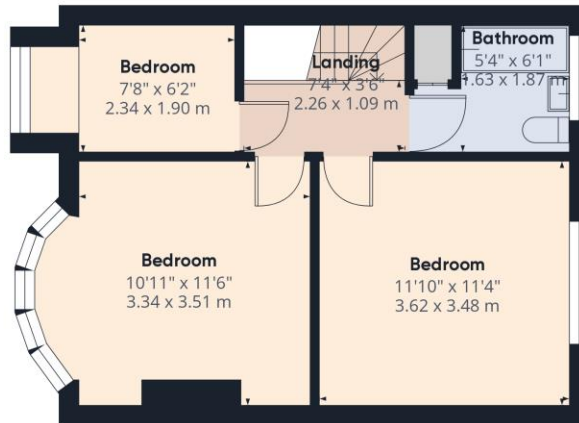


**Winkworth**

for every step...



Ground Floor



Floor 1

Approximate total area<sup>(1)</sup>  
 962.18 ft<sup>2</sup>  
 89.39 m<sup>2</sup>

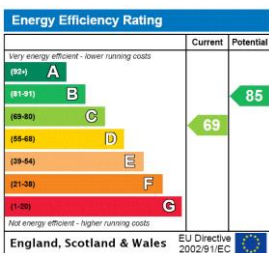
(1) Excluding balconies and terraces

While every attempt has been made to ensure accuracy, all measurements are approximate, not to scale. This floor plan is for illustrative purposes only.

Calculations were based on RICS IPMS 3C standard. Please note that calculations were adjusted by a third party and therefore may not comply with RICS IPMS 3C.

GIRAFFE360

This floorplan is for illustration purposes only and is not to scale. The position and size of doors, windows, appliances and other features are approximate.



**Tenure:** Freehold

**Council Tax Band:** D - Brent

Where no figures are shown, we have been unable to ascertain the information. All figures that are shown were correct at the time of printing.

Kingsbury | 020 8204 0000 | kingsbury@winkworth.co.uk

**Winkworth**

for every step...

winkworth.co.uk

Winkworth wishes to inform prospective buyers and tenants that these particulars are a guide and act as information only. All our details are given in good faith and believed to be correct at the time of printing but they don't form part of an offer or contract. No Winkworth employee has authority to make or give any representation or warranty in relation to this property. All fixtures and fittings, whether fitted or not are deemed removable by the vendor unless stated otherwise and room sizes are measured between internal wall surfaces, including furnishings.