



HOLLOWAY ROAD, LONDON, N7
£500,000 SHARE OF FREEHOLD

A TASTEFULLY RENOVATED TWO BEDROOM APARTMENT MOMENTS FROM HOLLOWAY STATION

Islington | 0207 354 2480 | islington@winkworth.co.uk

Winkworth

winkworth.co.uk

See things differently



DESCRIPTION:

Set across the upper floors of this well-maintained building is a recently renovated two-bedroom flat. The property is in immaculate condition throughout and is flooded with natural light. Accommodation consists of two double bedrooms and a stunning bathroom on the top floor. Positioned on the first floor is the open plan kitchen/reception room, including integrated appliances and ample worktop space. The property further benefits from its own front door, a share of freehold and is offered to the market on a chain-free basis.

Holloway Road is ideally located for easy access to the City and the West End and is set moments from the many bars, restaurants and boutique shops on Upper Street. The closest transport links can be found 0.2 miles away at Holloway Road station (Piccadilly Line), with Angel underground (Northern line) and Highbury & Islington station (Victoria Line) also within easy reach. Overground services are located at both Essex Road and Canonbury, whilst international transport is facilitated from Kings Cross St. Pancras which is one stop away.

Any associated charges including, but not limited to, service charge, ground rent and sinking funds outlined in the marketing material is an approximation calculated using information provided by and described by the client at the time of instruction. The actual cost may be subject to change and therefore we recommend all interested parties carry out their own enquiries.

Winkworth



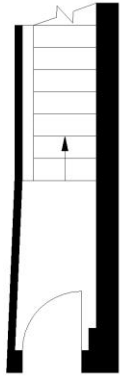
Winkworth

HOLLOWAY ROAD, N7

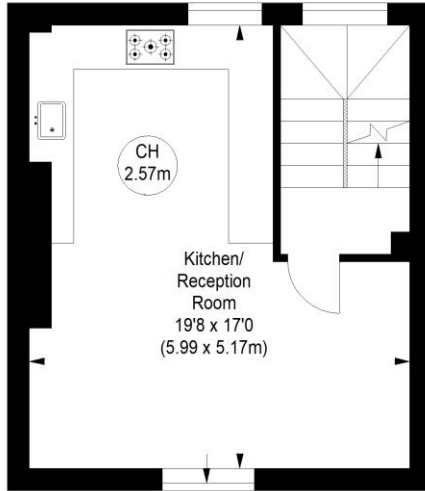
Approximate gross internal area
716 sq ft / 66.52 sq m



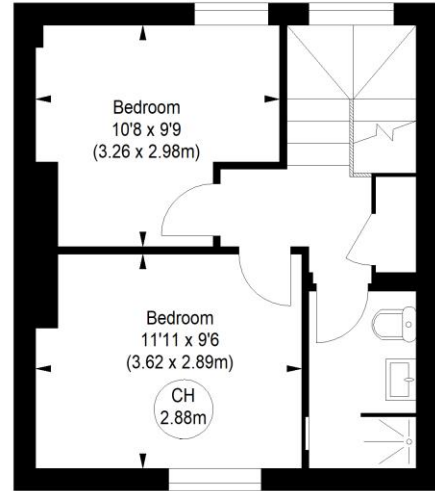
Key :
CH - Ceiling Height



GROUND FLOOR
ENTRANCE



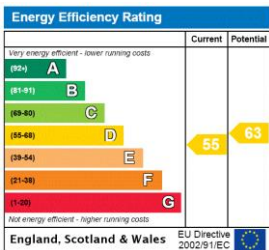
FIRST FLOOR



SECOND FLOOR

Not to scale, for guidance only and must not be relied upon as a statement of fact.
All measurements and areas are approximate only

This floorplan is for illustration purposes only and is not to scale. The position and size of doors, windows, appliances and other features are approximate.



Islington | 0207 354 2480 | islington@winkworth.co.uk



winkworth.co.uk

See things differently

Winkworth wishes to inform prospective buyers and tenants that these particulars are a guide and act as information only. All our details are given in good faith and believed to be correct at the time of printing but they don't form part of an offer or contract. No Winkworth employee has authority to make or give any representation or warranty in relation to this property. All fixtures and fittings, whether fitted or not are deemed removable by the vendor unless stated otherwise and room sizes are measured between internal wall surfaces, including furnishings.