



SHACKLEWELL STREET, LONDON, E2
£625,000 LEASEHOLD

A UNIQUE TWO-BEDROOM, TWO-BATHROOM MAISONETTE IN THE HEART OF SHOREDITCH

Shoreditch | 020 7749 7650 | shoreditch@winkworth.co.uk

Winkworth

winkworth.co.uk

See things differently



DESCRIPTION:

Rare to the market is this stunning bright and spacious two-bedroom end of terrace property that is located in the heart of Shoreditch. The property is a live/work unit and is split over three floors. On the ground floor there is a large double bedroom and an adjoining separate toilet room. The top floor includes a large double bedroom with incredible vaulted ceilings and a mezzanine storage area, and family bathroom. The middle floor has a large open plan kitchen, dining and living areas with embedded fridge, freezer and washing machine. The top floor of the house offers amazing views of the City skyline and the property further benefits from being on a quiet one road street facing an open playground with plenty of sunlight (South and West). Further benefits include a separate entrance to the property from the rear of the property in a secure gated development where free weekend car parking is possible, visitors' all-time parking and bicycle safe storage available.

Shacklewell Street is enviably located with Shoreditch High Street, Bethnal Green and Hoxton overground close by. Liverpool Street, Bethnal Green and Old Street underground stations are also within easy walking distance. The City is also close by. You are also in close proximity to Brick Lane, Columbia Road and Spitalfields Market offering a vast array of local amenities, boutique shops, cafes, bars, pop-ups and restaurants.

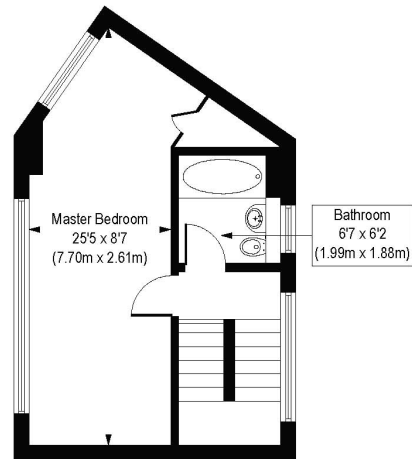
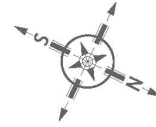
Winkworth



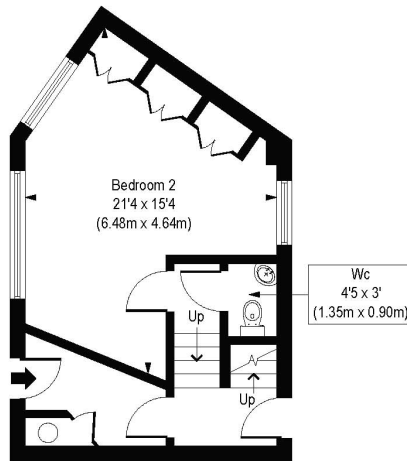
Winkworth

Shacklewell Street, E2

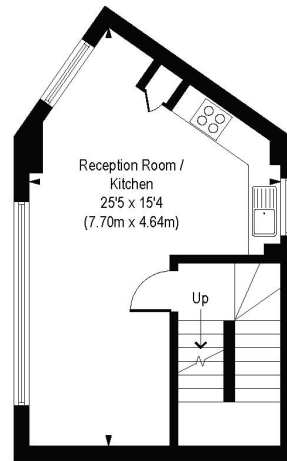
Approx. Gross Internal Floor Area 986 sq. ft / 91.65 sq. m



Second Floor
Gross Internal
Floor Area 328 sq ft



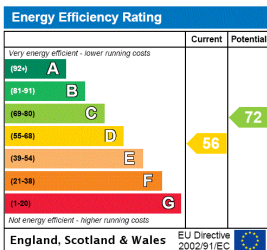
Ground Floor
Gross Internal
Floor Area 330 sq ft



First Floor
Gross Internal
Floor Area 328 sq ft

COMPLIANT WITH RICS CODE OF MEASURING PRACTICE. Floorplan is for illustrative purposes only and is not to scale. Every attempt has been made to ensure the accuracy of the floorplan shown, however all measurements, fixtures, fittings and data shown are an approximate interpretation for illustrative purposes only. Liability for errors, omissions or mis-statement through negligence or otherwise is hereby excluded.

This floorplan is for illustration purposes only and is not to scale. The position and size of doors, windows, appliances and other features are approximate.



Shoreditch | 020 7749 7650 | shoreditch@winkworth.co.uk



winkworth.co.uk

See things differently

Winkworth wishes to inform prospective buyers and tenants that these particulars are a guide and act as information only. All our details are given in good faith and believed to be correct at the time of printing but they don't form part of an offer or contract. No Winkworth employee has authority to make or give any representation or warranty in relation to this property. All fixtures and fittings, whether fitted or not are deemed removable by the vendor unless stated otherwise and room sizes are measured between internal wall surfaces, including furnishings.