



CLANRICARDE GARDENS, W2
£2,816.67 PER MONTH PART FURNISHED

THIS BRIGHT AND SPACIOUS MAISONETTE IS SITUATED GROUND AND LOWER GROUND FLOORS OF THIS IMPRESSIVE VICTORIAN BUILDING ON THIS QUIET CUL DE SAC, JUST BEHIND NOTTING HILL GATE.

Notting Hill Sales | 0207 727 3227 | nottinghill@winkworth.co.uk

Winkworth

for every step...

winkworth.co.uk



DESCRIPTION:

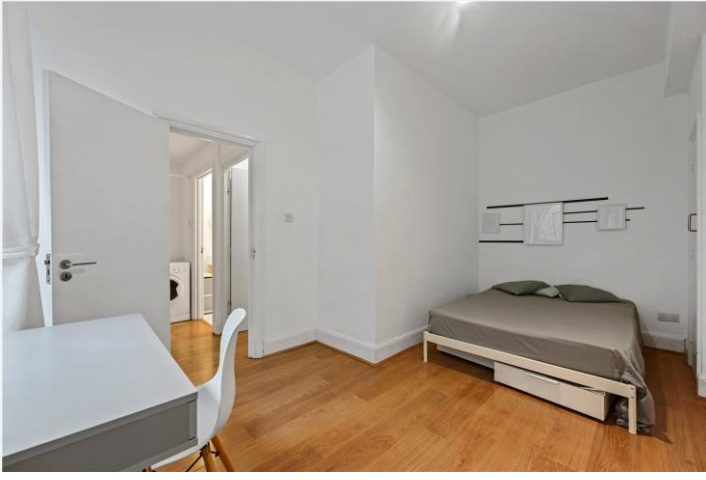
This bright and spacious maisonette is situated ground and lower ground floors of this impressive Victorian building on this quiet cul de sac just behind Notting Hill Gate.

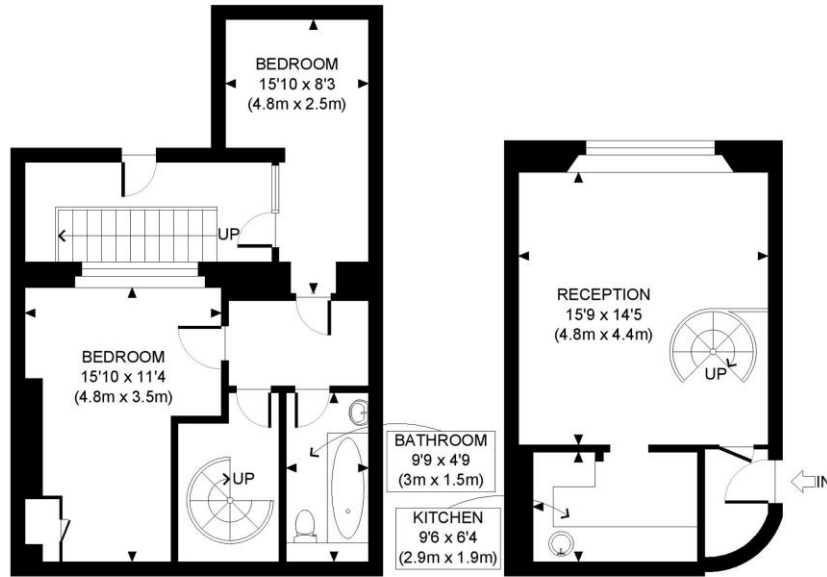
Entrance on the ground floor, the flat comprises, spacious living room with wonderful heigh ceilings, semi open plan fully fitted kitchen, a spiral staircase then leads down to two well separated spacious double bedrooms and bathroom.

LOCATION:

Clanricarde Gardens is a quiet cul-de-sac a moment's walk from Notting Hill Gate Station, local shops restaurants and the green open spaces of Kensington Gardens.







This plan is for illustrative purposes only and should be used as such by any prospective client. Whilst every attempt has been made to ensure the accuracy of the Floor Plan contained here, measurements of the doors, windows, rooms and any other items are approximate and no responsibility is taken for any errors, omissions, or misstatement. The services, systems and appliances shown have not been tested and no guarantee as to the operability or efficiency can be given.

PROPERTY PHOTO PLANS COOK

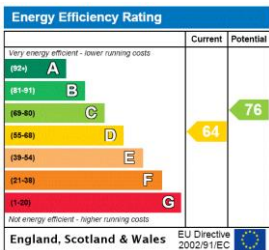
This floorplan is for illustration purposes only and is not to scale. The position and size of doors, windows, appliances and other features are approximate.

Deposit: £3,250

Holding Deposit:

Council Tax Band:

Where no figures are shown, we have been unable to ascertain the information. All figures that are shown were correct at the time of printing.



Notting Hill Sales | 0207 727 3227 | nottinghill@winkworth.co.uk

for every step...

winkworth.co.uk

Winkworth wishes to inform prospective buyers and tenants that these particulars are a guide and act as information only. All our details are given in good faith and believed to be correct at the time of printing but they don't form part of an offer or contract. No Winkworth employee has authority to make or give any representation or warranty in relation to this property. All fixtures and fittings, whether fitted or not are deemed removable by the vendor unless stated otherwise and room sizes are measured between internal wall surfaces, including furnishings.