



## Tachbrook Street, SW1V

£3,400 PER MONTH

FURNISHED

### AT A GLANCE

- Three bedrooms
- Family bathroom
- Front and rear patio
- Own front door
- Eat in Kitchen
- Large living room

**Winkworth**

for every step...



Energy Efficiency Rating		
	Current	Potential
Very energy efficient - lower running costs		
(92+) <b>A</b>		
(81-91) <b>B</b>		
(69-80) <b>C</b>		
(55-68) <b>D</b>	69	75
(39-54) <b>E</b>		
(21-38) <b>F</b>		
(1-20) <b>G</b>		
Not energy efficient - higher running costs		
England, Scotland & Wales	EU Directive 2002/91/EC	

## TACHBROOK STREET, SW1V

£3,400 PER MONTH

FURNISHED

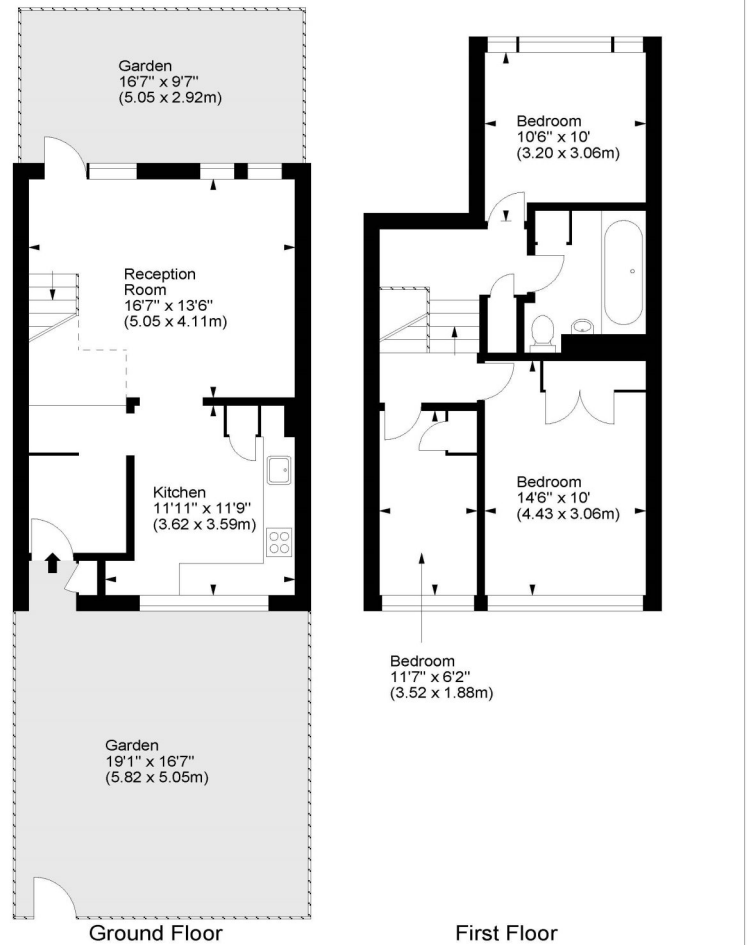
HOT WATER AND HEATING INCLUDED IN RENT - A well located, three bed, one bath arranged over three floors in a purpose block. Entering through your own front door, the ground floor comprises of a well equipped, large eat in kitchen with washing machine/dryer, dishwasher and freestanding large fridge/freezer.

The tastefully decorated living room can be found on the lower ground and has access out to the private patio.

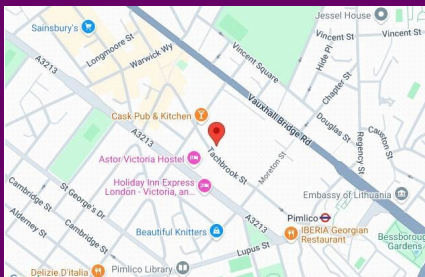
The first floor comprises of a stylish bathroom with shower over bath, a double bedroom and a storage cupboard. The top floor has the master bedroom with inbuilt storage and there is also a third bedroom perfect as another bedroom or a study. The flat further benefits from a front private garden and hot water and heating is included in the rent.

## Forsyth House, SW1

Approx. Gross Internal Area  
905 Sq Ft - 84.07 Sq M



For illustration purposes only. Not to scale.  
All measurements are taken and shown at floor level.  
www.r3photography.co.uk © Photography / Floor Plans / Lease Plans / EPCs



winkworth wishes to inform prospective buyers and tenants that these particulars are a guide and act as information only. All our details are given in good faith and believed to be correct at the time of printing but they don't form part of an offer or contract. No winkworth employee has authority to make or give any representation or warranty in relation to this property. All fixtures and fittings, whether fitted or not are deemed removable by the vendor unless stated otherwise and room sizes are measured between internal wall surfaces, including fireplaces.

Pimlico & Westminster | 020 7828 1786 |  
pimlico@winkworth.co.uk

winkworth.co.uk/pimlico

**Winkworth**

for every step...