



DOUGHTY STREET, LONDON, WC1N
£4,250,000 FREEHOLD

A LATE GEORGIAN GRADE II TOWNHOUSE OF IMMENSE
CHARM AND CHARACTER, SET IN DOUGHTY STREET IN THE
HEART OF HISTORIC BLOOMSBURY.

West End | 020 7240 3322 | westend@winkworth.co.uk

Winkworth

for every step...

winkworth.co.uk



DESCRIPTION:

A late Georgian Grade II Townhouse of immense charm set in Doughty Street in the heart of historic Bloomsbury.

The wide and treelined street is architecturally significant and contains virtually intact Georgian terraces on both sides as it heads north from John Street to Mecklenburgh Square.

It's principal rooms have impressive proportions and the property is awash with original features and charming architectural details.

The flexible accommodation is split over five floors and currently configured with 5 Bedrooms and 5 reception rooms.

Special mention has to be given to the large walled garden. It is not overly manicured but is well loved and cared for in the English style.



Winkworth

for every step...



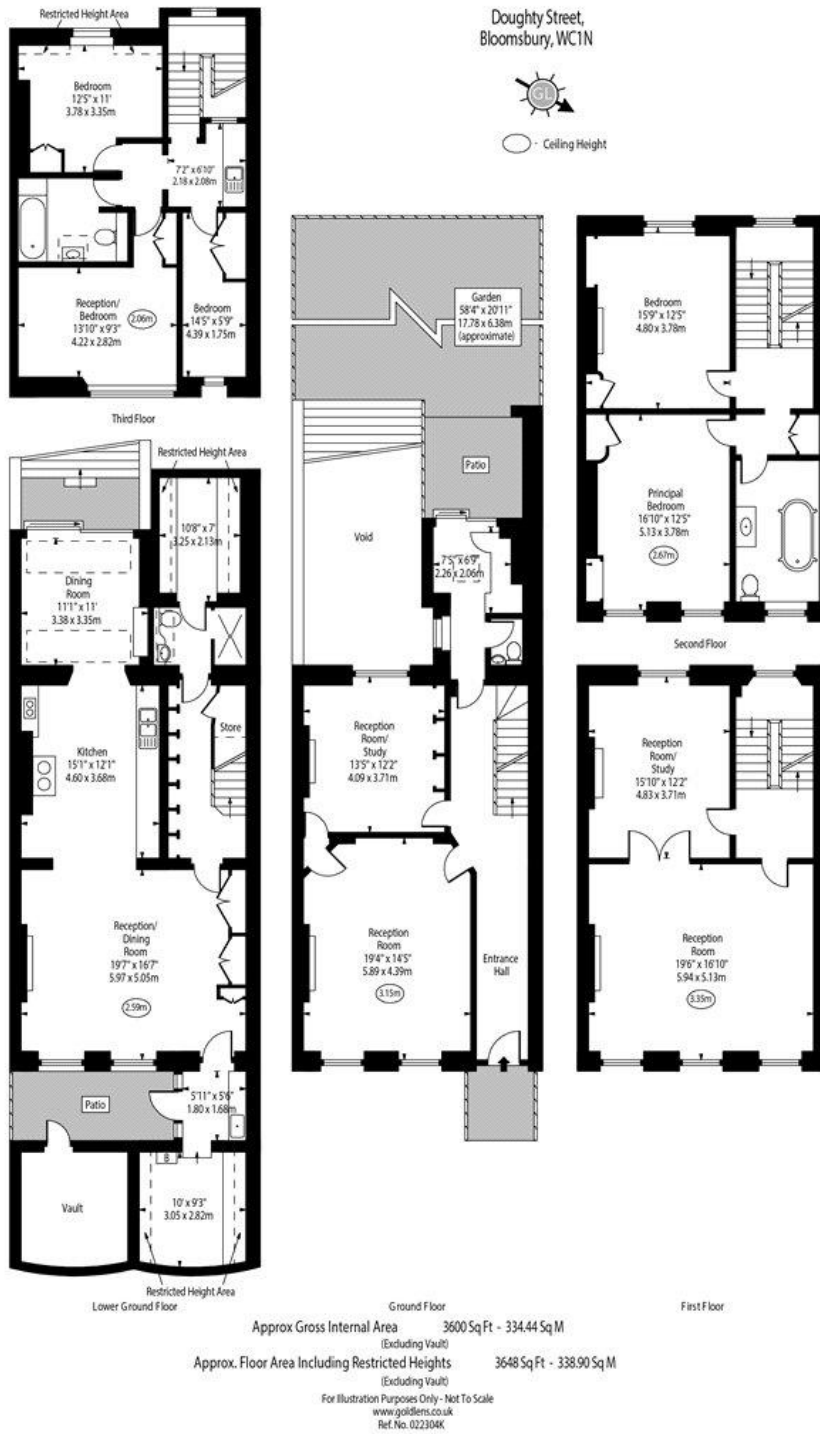
Winkworth

for every step...

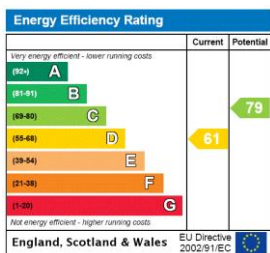
Doughty Street,
Bloomsbury, WC1N



○ Ceiling Height



This floorplan is for illustration purposes only and is not to scale. The position and size of doors, windows, appliances and other features are approximate.



Tenure: Freehold

Council Tax Band: H Approx. £4,022 P/A

Where no figures are shown, we have been unable to ascertain the information. All figures that are shown were correct at the time of printing.

West End | 020 7240 3322 | westend@winkworth.co.uk



for every step...

winkworth.co.uk

Winkworth wishes to inform prospective buyers and tenants that these particulars are a guide and act as information only. All our details are given in good faith and believed to be correct at the time of printing but they don't form part of an offer or contract. No Winkworth employee has authority to make or give any representation or warranty in relation to this property. All fixtures and fittings, whether fitted or not are deemed removable by the vendor unless stated otherwise and room sizes are measured between internal wall surfaces, including furnishings.