



ELMCROFT GARDENS, LONDON, NW9
£530,000 FREEHOLD

THE BEDROOM MID TERRACE MODERNISATION PROJECT

Kingsbury | 020 8204 0000 | kingsbury@winkworth.co.uk

Winkworth

for every step...

winkworth.co.uk



DESCRIPTION: This 1930's built three-bedroom house is a perfect blank canvas for someone in search of a development project to get creative and bring their dream home to life. The property is in need of renovation currently consisting of a kitchen, three bedrooms, an ample reception room, and a family bathroom. Externally you will benefit from the convenience of a private rear garden and off-street parking and a sizeable garage. This house is positioned beautifully within the ever popular and highly sought after Elmcroft Gardens residence, with great transport links via Kingsbury Station (Jubilee Line) into Central London for commuters, and within walking distance from Kingsbury's array of shops, schools and amenities. An internal viewing recommended to see the true potential of this property.



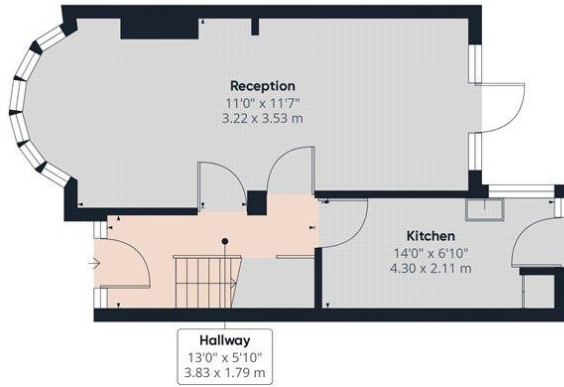
Winkworth

for every step...

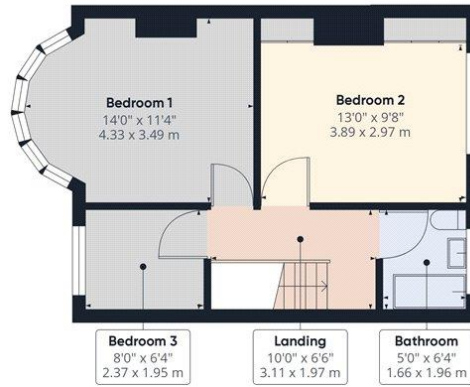


Winkworth

for every step...



Ground Floor Building 1



Floor 1 Building 1



Ground Floor Building 2

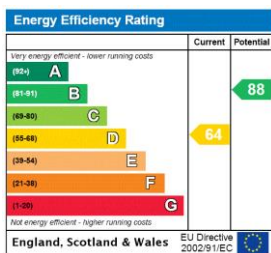
Approximate total area⁽¹⁾
1182.95 ft²
109.9 m²

(1) Excluding balconies and terraces

While every attempt has been made to ensure accuracy, all measurements are approximate, not to scale. This floor plan is for illustrative purposes only.

GIRAFFE360

This floorplan is for illustration purposes only and is not to scale. The position and size of doors, windows, appliances and other features are approximate.



Tenure: Freehold

Term: 0 year and 0 months

Service Charge: £0 per annum

Ground Rent: £ 0 Annually (subject to increase)

Council Tax Band: D - Brent

Where no figures are shown, we have been unable to ascertain the information. All figures that are shown were correct at the time of printing.