



St Georges Square, SW1V

£3,270 PER MONTH

FURNISHED

AT A GLANCE

- Two double bedrooms
- Two bathrooms
- Split level
- Eat in kitchen
- Large living room
- Ample storage

Winkworth

for every step...



Energy Efficiency Rating		
	Current	Potential
Very energy efficient - lower running costs		
(92+) A		
(81-91) B		
(69-80) C		74
(55-68) D	52	
(39-54) E		
(21-38) F		
(1-20) G		
Not energy efficient - higher running costs		
England, Scotland & Wales	EU Directive 2002/91/EC	

ST GEORGES SQUARE, SW1V

£3,270 PER MONTH

FURNISHED

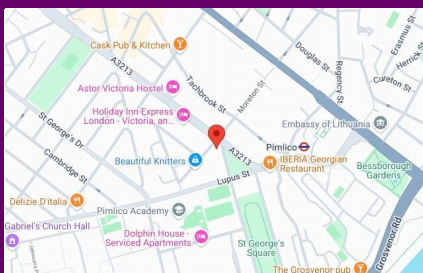
A stunning, Stucco fronted, Victorian split level, two bedroom, two bathroom flat spanning across 1033 sq ft and on the highly desirable St George's Square.

The first floor comprises of a bright and airy, eat in kitchen, with plenty of worktop space, storage and all appliances - includes, washing machine, dishwasher, fridge and freezer. Next door is a super spacious living room with storage and large sash windows that lets the natural light flood in. On the same floor there is also a high spec, shower room with toilet.

The second floor comprises of two double bedrooms with ample storage and a spacious bathroom with shower over bath.

St Georges Square is located well for Pimlico Underground (Victoria Line, 0.2 miles) which is only a short stroll away.

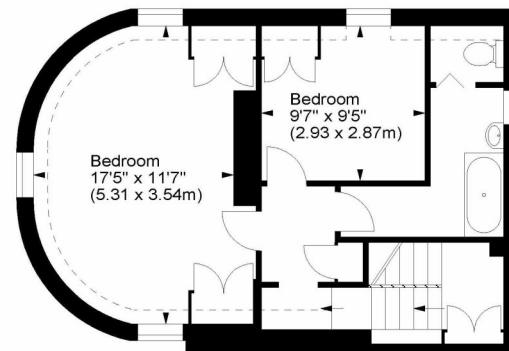
Victoria Station is also close by (0.7 miles) where there is a plethora of transport options, shops and restaurants.



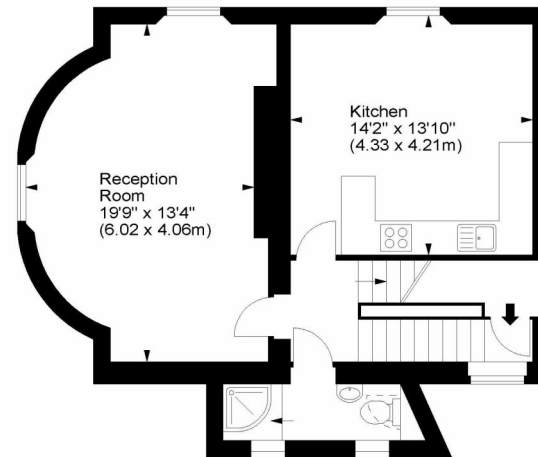
winkworth wishes to inform prospective buyers and tenants that these particulars are a guide and act as information only. All our details are given in good faith and believed to be correct at the time of printing but they don't form part of an offer or contract. No winkworth employee has authority to make or give any representation or warranty in relation to this property. All fixtures and fittings, whether fitted or not are deemed removable by the vendor unless stated otherwise and room sizes are measured between internal wall surfaces, including fireplaces.

St George's Square, SW1

Approx. Gross Internal Area
1033 Sq Ft - 95.97 Sq M



Fourth Floor



Third Floor

For illustration purposes only. Not to scale.
All measurements are taken and shown at floor level.
www.r3photography.co.uk © Photography / Floor Plans / Lease Plans / EPCs



Pimlico & Westminster | 020 7828 1786 |
pimlico@winkworth.co.uk

winkworth.co.uk/pimlico

Winkworth

for every step...