



MITCHAM LANE, SW16
£495,000 LEASEHOLD

A TWO BEDROOM GROUND FLOOR GARDEN FLAT.

Tooting | 020 8767 5221 | tooting@winkworth.co.uk

Winkworth

for every step...

winkworth.co.uk

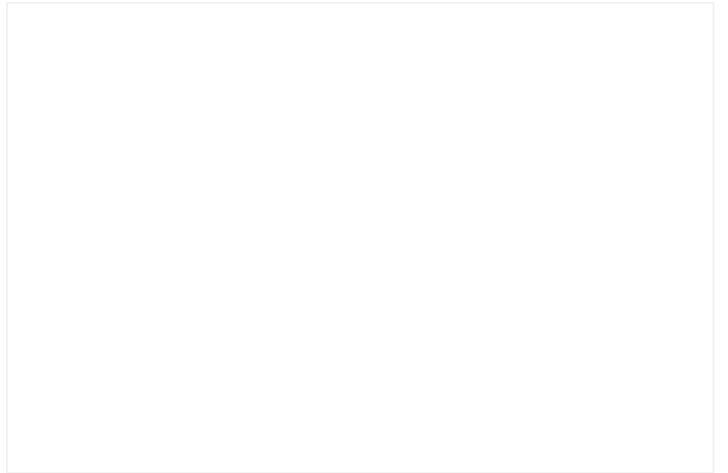
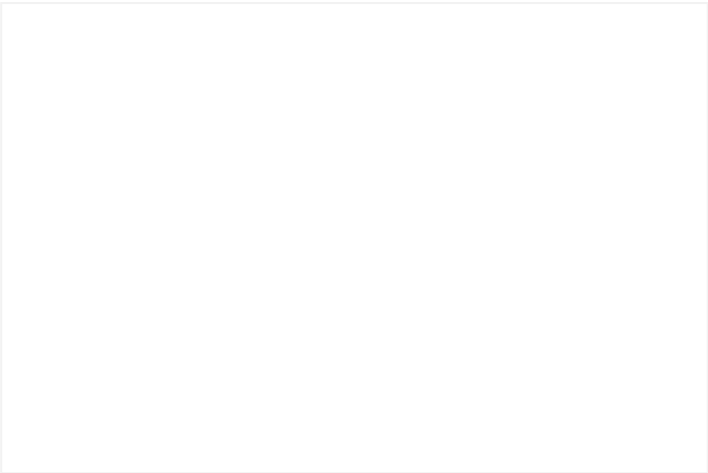
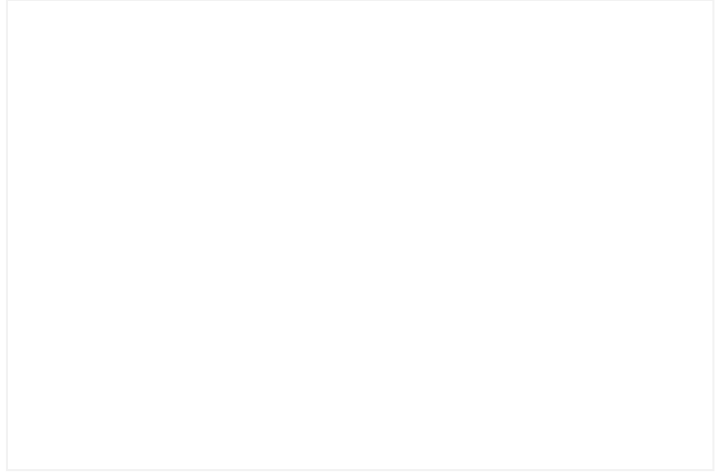
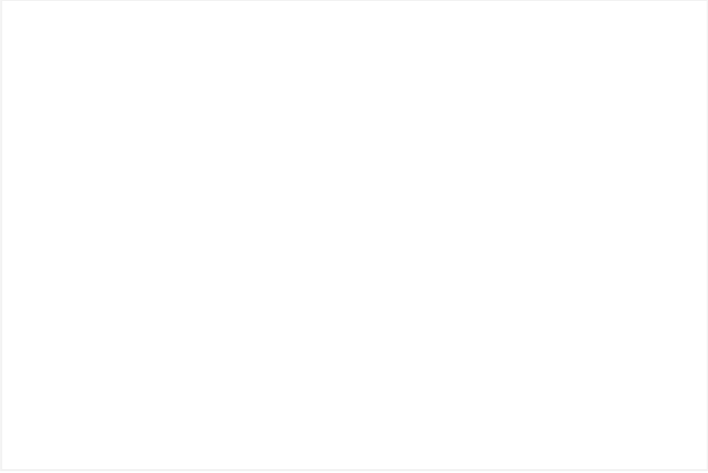
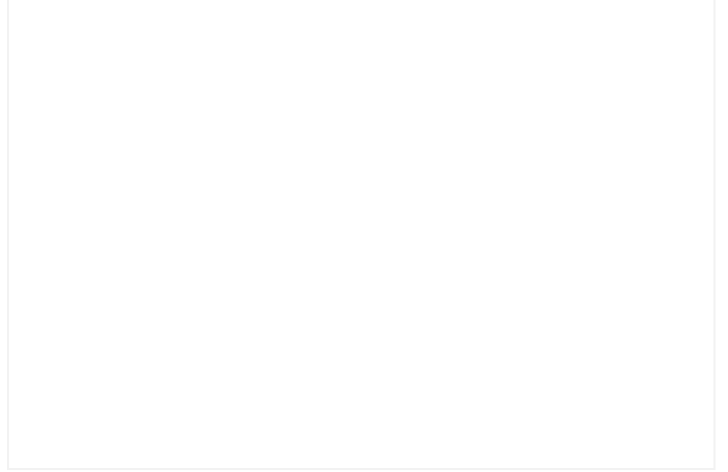


DESCRIPTION:

A well-presented ground-floor garden flat featuring two generous double bedrooms. This property boasts a bright and spacious open-plan kitchen and reception area, complete with wood laminate flooring wall and base units, skylights, and floor-to-ceiling sliding doors leading to a partially decked rear garden. Both double bedrooms are well-lit, spacious, and finished with wood laminate flooring.

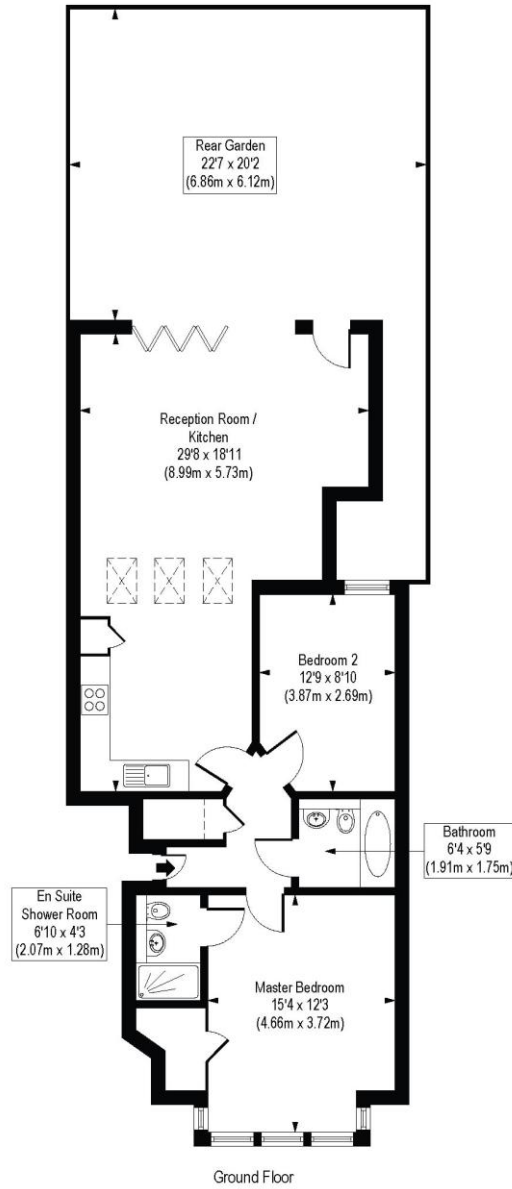
Mitcham Lane is a vibrant and well-connected area in Streatham, offering a mix of residential charm and urban convenience. The area benefits from excellent transport links, with Streatham (0.8miles), Streatham Common (0.6miles), and Tooting stations (1.0miles) nearby, providing easy access to Central London and beyond. It boasts a variety of local amenities, including independent cafes, restaurants, and shops, as well as larger supermarkets for everyday needs. Green spaces such as Streatham Common and Tooting Bec Common are within easy reach, offering residents a chance to enjoy outdoor activities. With good schools, a strong sense of community, and a blend of period and modern properties, Mitcham Lane is a sought-after location for families and professionals alike.

Wandsworth Council Tax Band: C



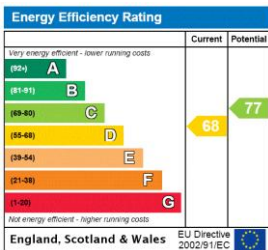
Mitcham Lane, SW16

Approx. Gross Internal Floor Area 893 sq. ft / 83.00 sq. m



COMPLIANT WITH RICS CODE OF MEASURING PRACTICE. Floorplan is for illustrative purposes only and is not to scale. Every attempt has been made to ensure the accuracy of the floorplan shown, however all measurements, fixtures, fittings and data shown are an approximate interpretation for illustrative purposes only. Liability for errors, omissions or mis-statement through negligence or otherwise is hereby excluded.

This floorplan is for illustration purposes only and is not to scale. The position and size of doors, windows, appliances and other features are approximate.



Tooting | 020 8767 5221 | tooting@winkworth.co.uk

for every step...

winkworth.co.uk

Winkworth wishes to inform prospective buyers and tenants that these particulars are a guide and act as information only. All our details are given in good faith and believed to be correct at the time of printing but they don't form part of an offer or contract. No Winkworth employee has authority to make or give any representation or warranty in relation to this property. All fixtures and fittings, whether fitted or not are deemed removable by the vendor unless stated otherwise and room sizes are measured between internal wall surfaces, including furnishings.