



ARMOURY ROAD, DEPTFORD, LONDON, SE8
£325,000 LEASEHOLD

**A REALLY WELL PRESENTED AND BRIGHT TWO BEDROOM
2ND FLOOR APARTMENT, THAT FEATURES OFF STREET
PARKING AND MEASURES CIRCA 525 SQ FT. LOCATE
LITERALLY MOMENTS FROM ELVERSON ROAD DLR.**

Greenwich, 02030533033, greenwich@winkworth.co.uk

Winkworth

for every step...

winkworth.co.uk

DESCRIPTION:

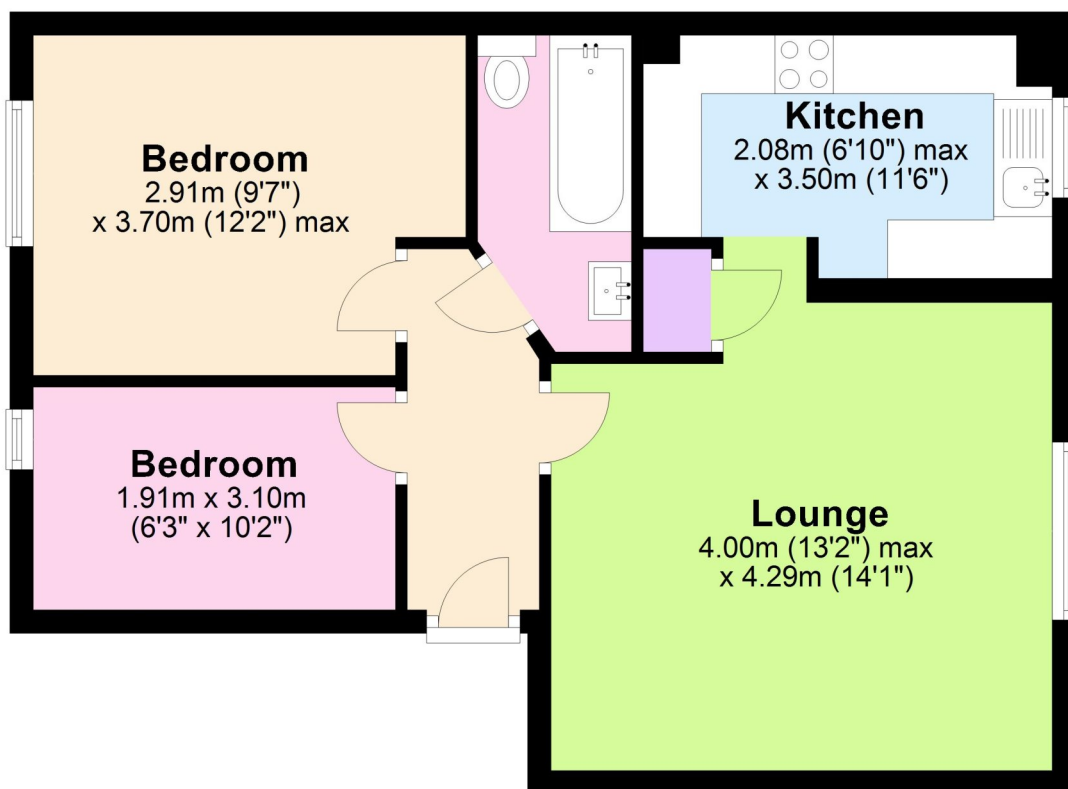
A really well presented and bright two bedroom 2nd floor apartment, that features off street parking and measures circa 525 sq ft. locate literally moments from Elverson Road DLR.

In good order throughout, the property comprises a 14ft reception room that leads onto a well fitted modern kitchen. There are two bedrooms and family bathroom. Added benefits include electric heating and double glazing. Along with communal grounds, the development also has ample residents parking!

Armoury Road is well located just on the borders of Deptford and Lewisham, and sits adjacent to Elverson Road DLR which makes it ideal for a quick commute into Canary Wharf. Brookmill Park is close by as is Lewisham centre, which offers a wide variety of shops, along with mainline rail. The property is being offered with no chain.

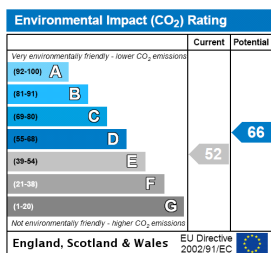
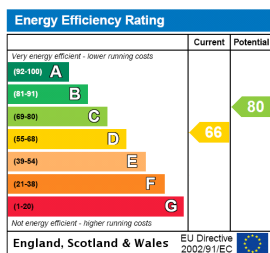
Second Floor

Approx. -0.0 sq. metres (-0.1 sq. feet)



Total area: approx. -0.0 sq. metres (-0.1 sq. feet)

This floorplan is for illustration purposes only and is not to scale. The position and size of doors, windows, appliances and other features are approximate.



Tenure: Leasehold

Term: 92 years

Service Charge: £1800 per annum

Ground Rent: £ 200 Annually (subject to increase)

Council Tax Band: C

Where no figures are shown, we have been unable to ascertain the information. All figures that are shown were correct at the time of printing.

Greenwich | 02030533033 | greenwich@winkworth.co.uk

Winkworth

for every step...

winkworth.co.uk

Winkworth wishes to inform prospective buyers and tenants that these particulars are a guide and act as information only. All our details are given in good faith and believed to be correct at the time of printing but they don't form part of an offer or contract. No Winkworth employee has authority to make or give any representation or warranty in relation to this property. All fixtures and fittings, whether fitted or not are deemed removable by the vendor unless stated otherwise and room sizes are measured between internal wall surfaces, including furnishings.