



ROE END, LONDON, NW9
£600,000 FREEHOLD

ENCHANTING THREE BEDROOM HOME ROE GREEN VILLAGE

Kingsbury | 020 8204 0000 | kingsbury@winkworth.co.uk

Winkworth

for every step...

winkworth.co.uk



Winkworth
for every step...

DESCRIPTION: A rarely available and rich in character property set in the heart of the picturesque 'Roe Green Village' conservation area. This enchanting three-bedroom end of terrace home boasts two separate reception rooms, both adjoining with a well-appointed attractive kitchen. Upstairs there are three lovely and well-proportioned bedrooms and a family bathroom. Externally, the gorgeous garden has been lovingly maintained hosting a heavenly private outdoor retreat ideal for relaxation, al fresco dining and beyond. The property benefits from being tucked away from the hustle and bustle of normal city living, yet still being within close proximity to local amenities, transport links, and schools. A viewing is highly recommended to discover this home's charm and location.



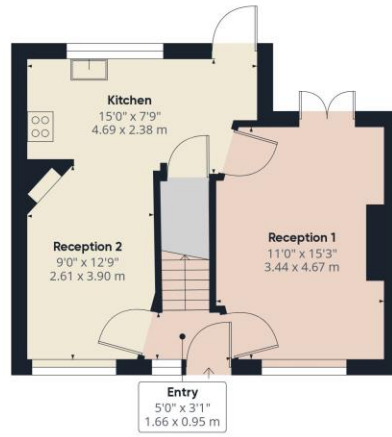
Winkworth

for every step...

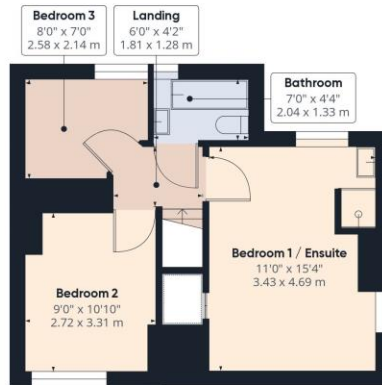


Winkworth

for every step...



Ground Floor



Floor 1

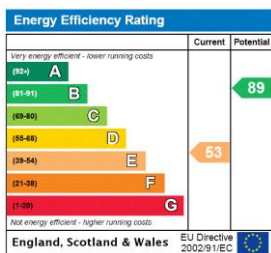
Approximate total area⁽¹⁾
792.22 ft²
73.6 m²

(1) Excluding balconies and terraces

While every attempt has been made to ensure accuracy, all measurements are approximate, not to scale. This floor plan is for illustrative purposes only.

GIRAFFE360

This floorplan is for illustration purposes only and is not to scale. The position and size of doors, windows, appliances and other features are approximate.



Tenure: Freehold

Council Tax Band: D - Brent

Where no figures are shown, we have been unable to ascertain the information. All figures that are shown were correct at the time of printing.

Kingsbury | 020 8204 0000 | kingsbury@winkworth.co.uk

Winkworth

for every step...

winkworth.co.uk

Winkworth wishes to inform prospective buyers and tenants that these particulars are a guide and act as information only. All our details are given in good faith and believed to be correct at the time of printing but they don't form part of an offer or contract. No Winkworth employee has authority to make or give any representation or warranty in relation to this property. All fixtures and fittings, whether fitted or not are deemed removable by the vendor unless stated otherwise and room sizes are measured between internal wall surfaces, including furnishings.