

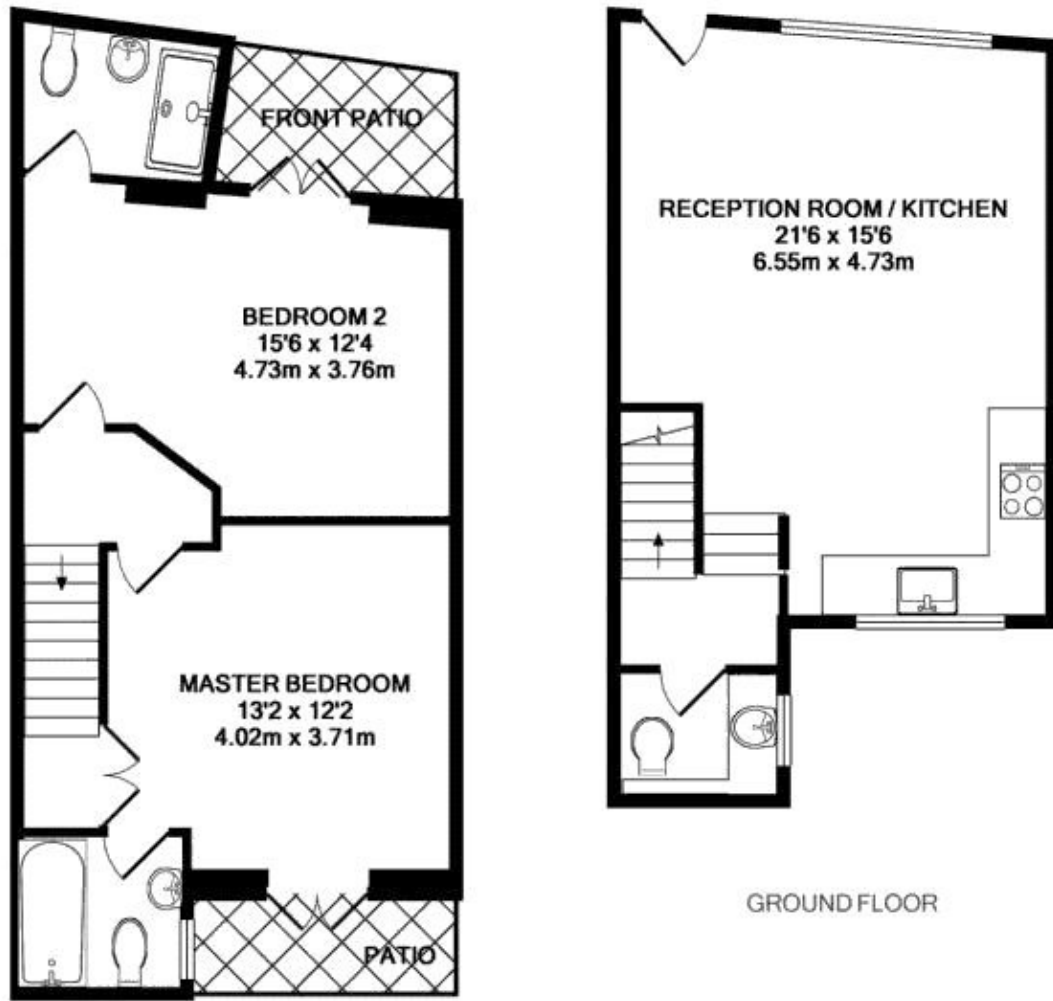


PHOENIX COURT, LEWISHAM, LONDON, SE13
£1,800 PER MONTH FURNISHED

DESCRIPTION:

A very large two double bedroom, two ensuite bathroom, split level period conversion spanning 865 sq ft. located close to Blackheath, Hither Green & Lewisham stations. Offered furnished and available immediately, your earliest viewing is advised.

Blackheath | 0208 8520999 | blackheath@winkworth.co.uk



LOWER GROUND FLOOR

GROUND FLOOR



TOTAL APPROX. FLOOR AREA 865 SQ. FT. (80.6 SQ.M.)
 Made with Metropix ©2013

This floorplan is for illustration purposes only and is not to scale. The position and size of doors, windows, appliances and other features are approximate.

Energy Efficiency Rating		Current	Potential
Very energy efficient - lower running costs			
(92+)	A		
(81-91)	B		
(69-80)	C		
(55-68)	D	72	79
(39-54)	E		
(21-38)	F		
(1-20)	G		
Not energy efficient - higher running costs			
England, Scotland & Wales		EU Directive 2002/91/EC	

Deposit: £2,076.92

Holding Deposit:

Council Tax Band: C

Where no figures are shown, we have been unable to ascertain the information. All figures that are shown were correct at the time of printing.