



CURRAN HOUSE, LUCAN PLACE, CHELSEA, LONDON, SW3
£900,000 LEASEHOLD

A BRIGHT THREE-BEDROOM APARTMENT BOASTING SPLENDID VIEWS OF THE RENOWNED MICHELIN BUILDING.

DESCRIPTION:

Curran House features a secure street entrance via Lucan Place and well-maintained communal areas. Access to all floors is facilitated by a passenger lift, with the apartment positioned on the third floor via a covered walkway.

The flat comprises an entrance hallway, a reception room with dining area and Juliet balcony, a well-equipped kitchen with appliances, two double bedrooms with built-in wardrobes, a single bedroom, a bathroom with overhead shower, and a separate WC.

AT A GLANCE

- Leasehold Tenure
- Three Bedrooms
- Communal Garden Access
- Views of Michelin House
- Close to Underground Station

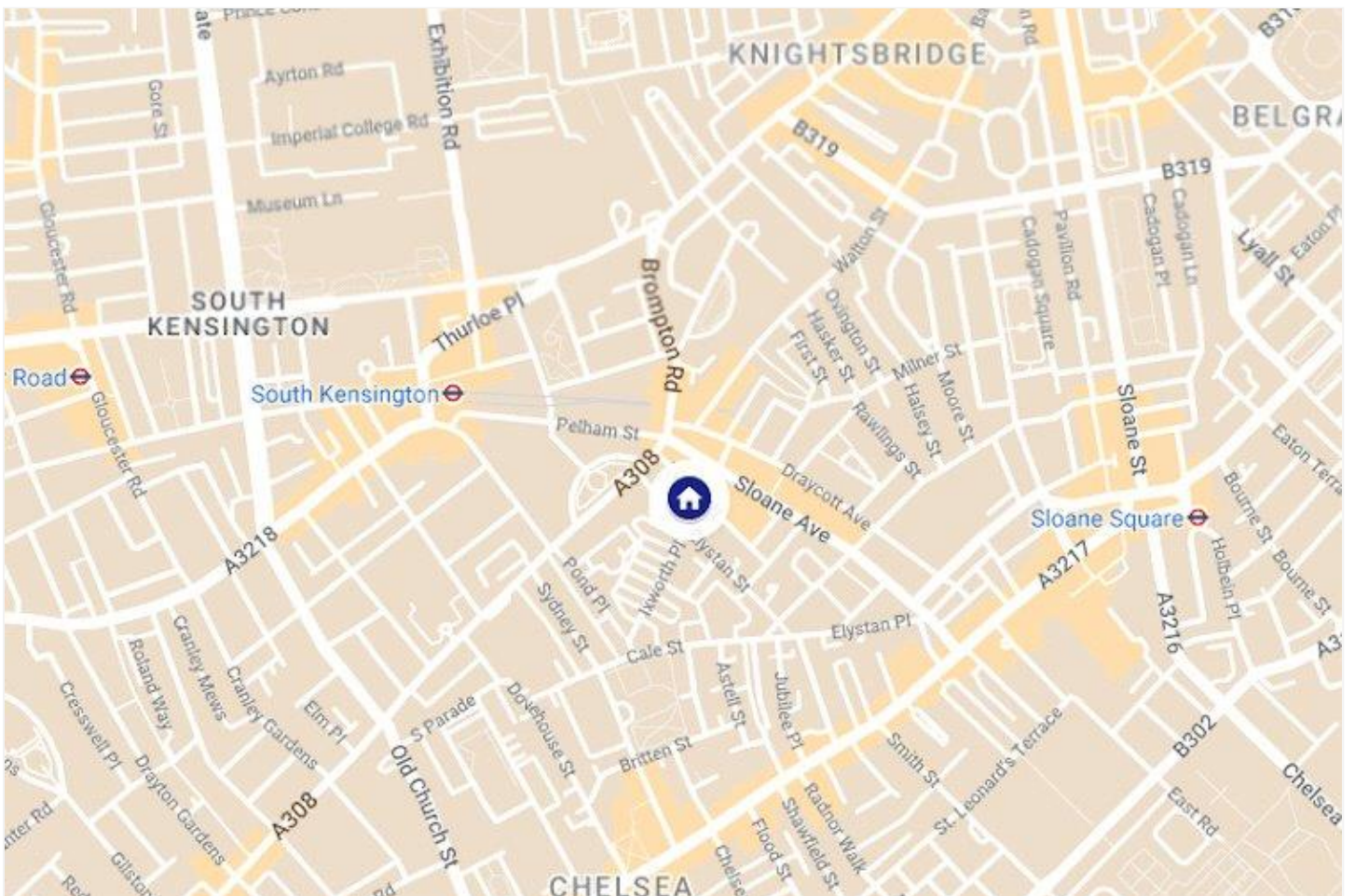
Knightsbridge & Chelsea | 0207 589 6616 | knightsbridge@winkworth.co.uk

Winkworth

for every step...

winkworth.co.uk





Curran House,
Lucan Place, SW3
Approximate Gross Internal Area
75.29 sq m / 810 sq ft

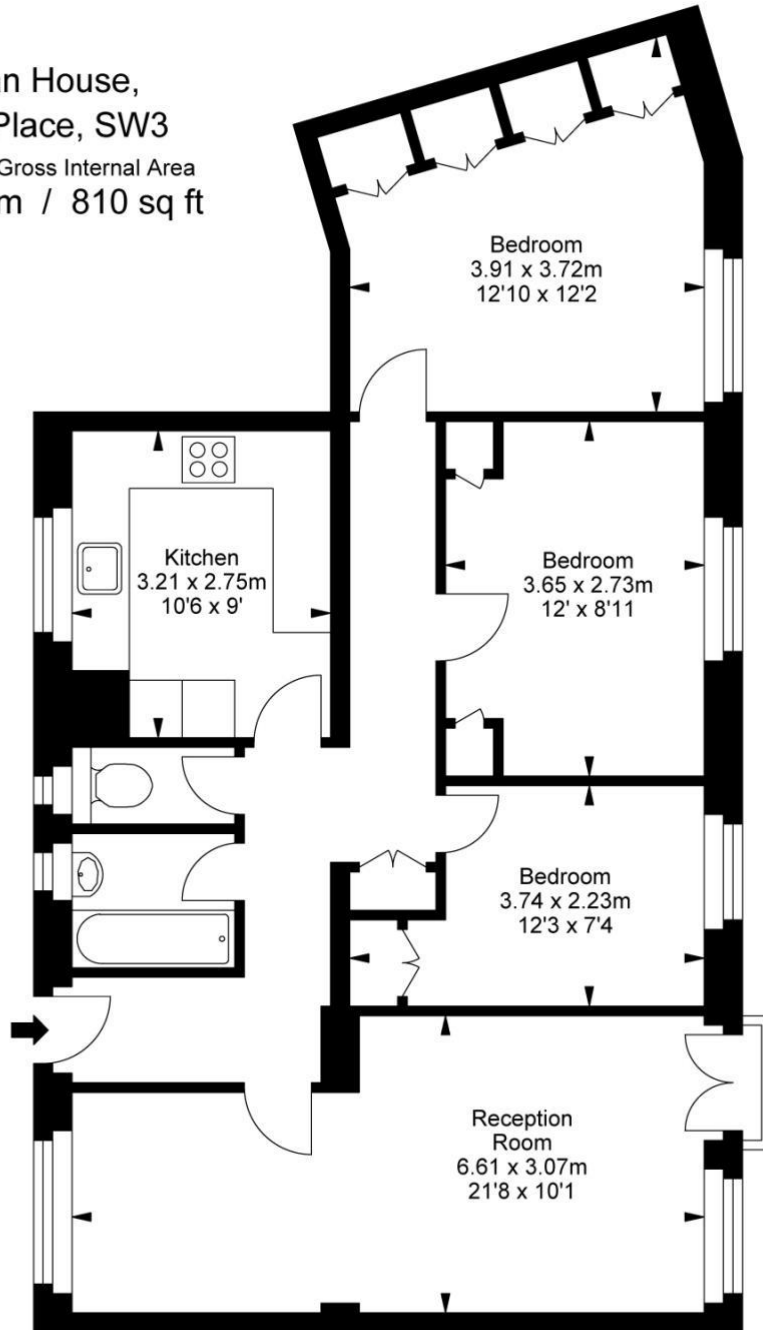
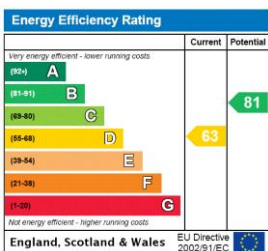


ILLUSTRATION FOR IDENTIFICATION PURPOSES ONLY
ALL MEASUREMENTS ARE MAXIMUM, AND INCLUDE WINDOW BAYS AND WARDROBES WHERE APPLICABLE
THIS PLAN MUST NOT BE REPRODUCED BY ANY OTHER PERSON WITHOUT PERMISSION

This floorplan is for illustration purposes only and is not to scale. The position and size of doors, windows, appliances and other features are approximate.



Tenure: Leasehold
Term: Expires - 23/06/2107
Service Charge: £1,723.40 per annum (payable quarterly)
Ground Rent: £ 10 Annually
Council Tax Band: E

Where no figures are shown, we have been unable to ascertain the information. All figures that are shown were correct at the time of printing.

Knightsbridge & Chelsea | 0207 589 6616 | knightsbridge@winkworth.co.uk

Winkworth

for every step...

winkworth.co.uk

Winkworth wishes to inform prospective buyers and tenants that these particulars are a guide and act as information only. All our details are given in good faith and believed to be correct at the time of printing but they don't form part of an offer or contract. No Winkworth employee has authority to make or give any representation or warranty in relation to this property. All fixtures and fittings, whether fitted or not are deemed removable by the vendor unless stated otherwise and room sizes are measured between internal wall surfaces, including furnishings.