



ST. STEPHENS GARDENS, W2
£1,250 PER WEEK PART FURNISHED

AN IMMACULATE AND BEAUTIFULLY PRESENTED TWO/THREE
BEDROOM TWO BATHROOM MAISONETTE ON THE TOP FLOOR WITH
ROOF TERRACE OF THIS IMPRESSIVE PERIOD BUILDING WITH
FANTASTIC LIGHT THROUGHOUT.

Notting Hill Sales | 0207 727 3227 | nottinghill@winkworth.co.uk

Winkworth

for every step...

winkworth.co.uk



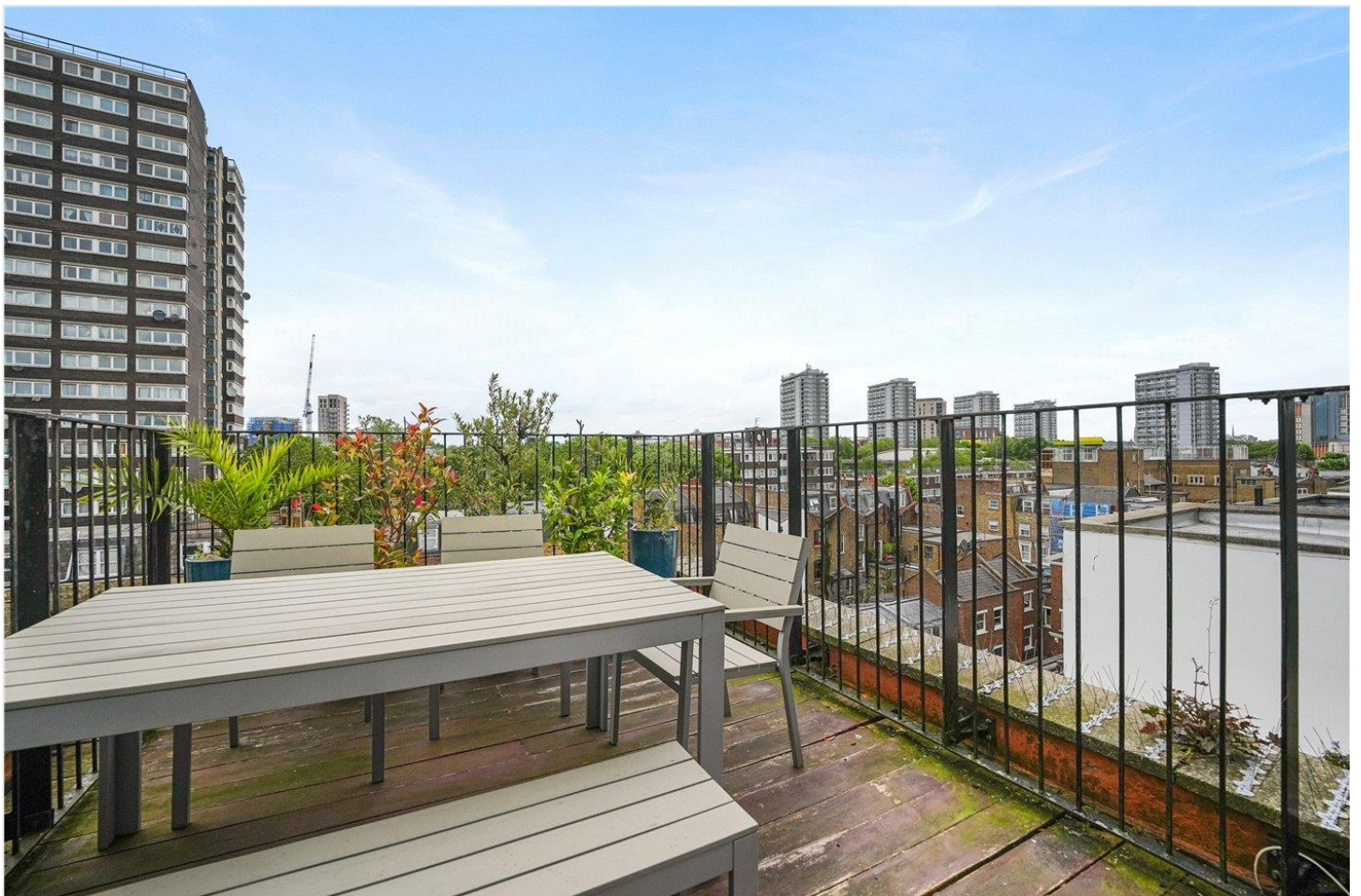
DESCRIPTION:

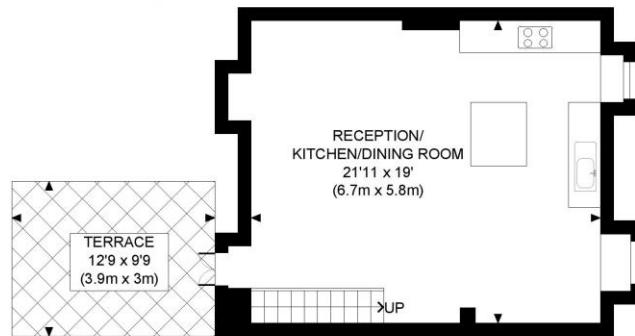
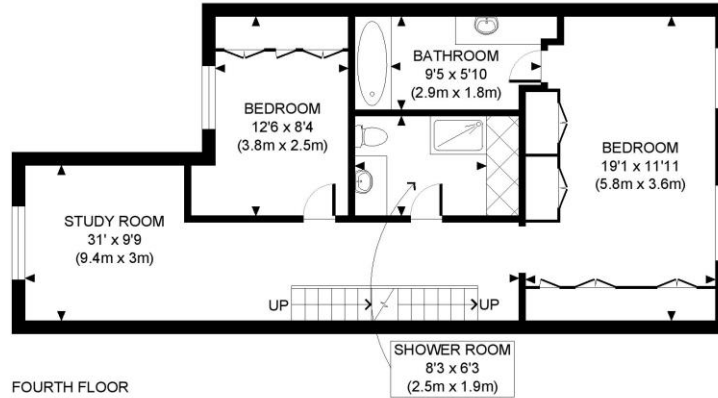
This property comprises entrance on the second floor with open study area on the half landing, stairs then lead up to master bedroom with ensuite bathroom, second double bedroom and family shower room - Top floor consists of a fantastic open plan and wonderfully lateral living space with fully fitted open plan kitchen with wooden floors and door out to private roof terrace.

Viewings highly recommended

LOCATION:

St Stephens Gardens is an imposing garden square located to the northern end of Chepstow Road, just around the corner from the popular hangouts The Cow and The Westbourne, and within easy walking distance of the shops and restaurants of Westbourne Grove.





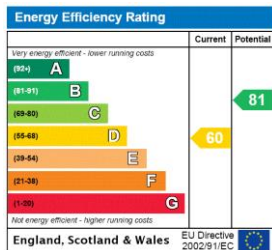
APPROX. GROSS INTERNAL FLOOR AREA: 1141 SQ FT/ 106 SQM



This plan is for illustrative purposes only and should be used as such by any prospective client. Whilst every attempt has been made to ensure the accuracy of the Floor Plan contained here, measurements of the doors, windows, rooms and any other items are approximate and no responsibility is taken for any errors, omissions, or misstatement. The services, systems and appliances shown have not been tested and no guarantee as to the operability or efficiency can be given.

PROPERTY PHOTO PLANS THE STOP SHOP FOR PROPERTY PHOTOGRAPHERS

This floorplan is for illustration purposes only and is not to scale. The position and size of doors, windows, appliances and other features are approximate.



Deposit: £0.00

Holding Deposit:

Council Tax Band:

where no figures are shown, we have been unable to ascertain the information. All figures that are shown were correct at the time of printing.



for every step...

Notting Hill Sales | 0207 727 3227 | nottinghill@winkworth.co.uk

winkworth.co.uk

Winkworth wishes to inform prospective buyers and tenants that these particulars are a guide and act as information only. All our details are given in good faith and believed to be correct at the time of printing but they don't form part of an offer or contract. No Winkworth employee has authority to make or give any representation or warranty in relation to this property. All fixtures and fittings, whether fitted or not are deemed removable by the vendor unless stated otherwise and room sizes are measured between internal wall surfaces, including furnishings.