



MILDMAY ROAD, LONDON, N1
£425,000 SHARE OF FREEHOLD

A FANTASTIC ONE BEDROOM FLAT MOMENTS FROM NEWINGTON GREEN

Islington | 0207 354 2480 | islington@winkworth.co.uk

Winkworth

winkworth.co.uk

See things differently



DESCRIPTION:

Positioned across the top floor of this well-maintained modern development is this fantastic one bedroom apartment. The property is good condition and offers well-proportioned, light filled rooms throughout. On entering the flat you will find a spacious bathroom, with the double bedroom further down the hall. The open plan kitchen living room is then located to the rear of the flat, which leads out to a wonderful private terrace. The property is sold with a share of the freehold and is offered to the market on a chain free basis.

Mildmay Road is perfectly located for local, shops, cafes and restaurants situated nearby in Newington Green which is well known for its village atmosphere. Dalston is also a short distance away offering ample amenities and a lively night life whilst Upper Street is close by and provides a selection of boutique shops and bars as well as theatres and a vibrant nightlife. The green spaces of Highbury Fields and Clissold Park are also just a short distance away. Transport across London is made easy with over ground links at nearby Canonbury, providing access to the City and East London whilst Highbury and Islington (Victoria line) is the closest underground link. Numerous bus services also offer routes across London whilst international travel is facilitated from St Pancras.

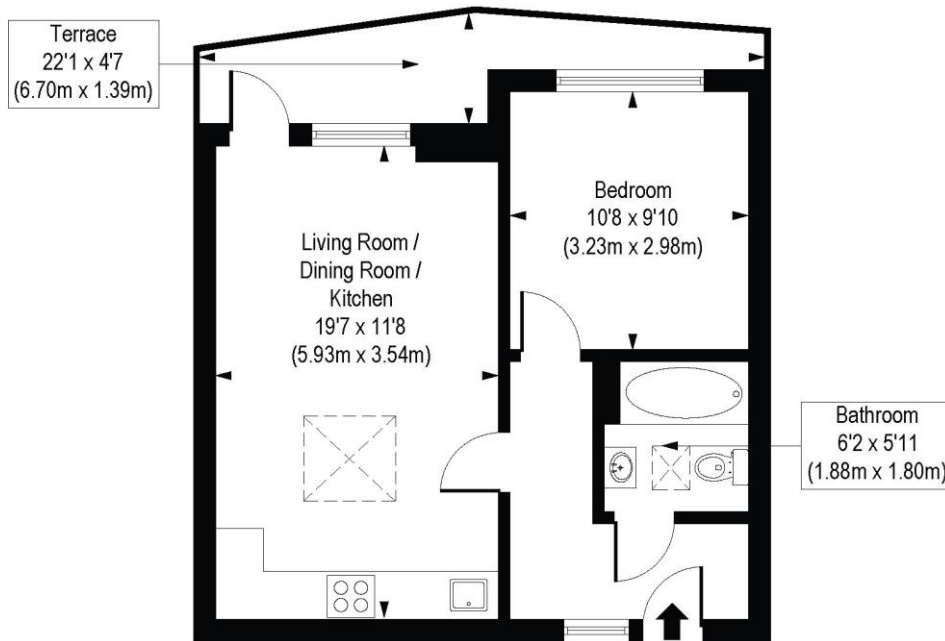
Winkworth



Winkworth

Mildmay Road, N1

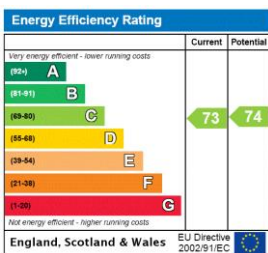
Approx. Gross Internal Floor Area 448 sq. ft / 41.58 sq. m



Second Floor

COMPLIANT WITH RICS CODE OF MEASURING PRACTICE. Floorplan is for illustrative purposes only and is not to scale. Every attempt has been made to ensure the accuracy of the floorplan shown, however all measurements, fixtures, fittings and data shown are an approximate interpretation for illustrative purposes only. Liability for errors, omissions or mis-statement through negligence or otherwise is hereby excluded.

This floorplan is for illustration purposes only and is not to scale. The position and size of doors, windows, appliances and other features are approximate.



Islington | 0207 354 2480 | islington@winkworth.co.uk



winkworth.co.uk

See things differently

Winkworth wishes to inform prospective buyers and tenants that these particulars are a guide and act as information only. All our details are given in good faith and believed to be correct at the time of printing but they don't form part of an offer or contract. No Winkworth employee has authority to make or give any representation or warranty in relation to this property. All fixtures and fittings, whether fitted or not are deemed removable by the vendor unless stated otherwise and room sizes are measured between internal wall surfaces, including furnishings.