

Bina Gardens SW5

Winkworth



Bina Gardens, South Kensington

London, SW5

Spacious one-bedroom apartment in South Kensington featuring two bathrooms. The property includes a bright reception room, separate kitchen, and master bedroom with en-suite bathroom. Second bathroom serves as guest facility. Well-maintained throughout with good ceiling height and ample natural light. Conveniently located 4 minutes from Gloucester Road tube (piccadilly, district, circle lines)

ASKING PRICE: £685,000 Subject to Contract

TENURE: Share of Freehold

LOCAL AUTHORITY: The Royal Borough of Kensington & Chelsea

SERVICE CHARGE: £2,300 per annum approx.

GROUND RENT: To be confirmed





Great Transport Links | Natural Light | Quiet Location

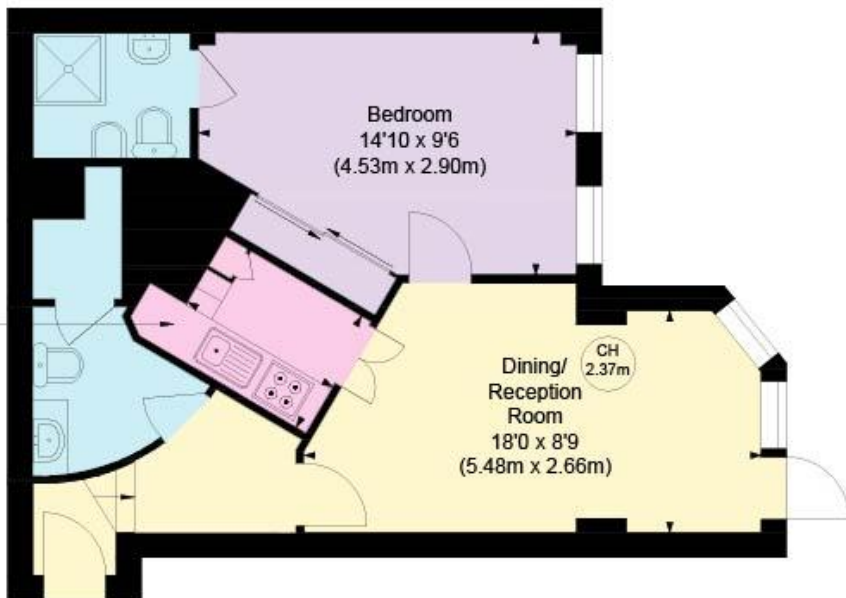
BINA GARDENS, SW5
 APPROXIMATE GROSS INTERNAL AREA
 487 Ft² - 45.24 M²

COMPLIANT WITH RICS CODE OF MEASURING PRACTICE Floorplan is for illustrative purposes only and is not to scale. Every attempt has been made to ensure the accuracy of the floorplan shown, however all measurements, fixtures, fittings and data shown are an approximate interpretation for illustrative purposes only. Liability for errors, omissions or mis-statement through negligence or otherwise is hereby excluded.

Key :
 CH - Ceiling Height



Kitchen
 8'7 x 5'1
 (2.01m x 1.56m)



Score	Energy rating	Current	Potential
92+	A		
81-91	B		
69-80	C		69 C
55-68	D	59 D	
39-54	E		
21-38	F		
1-20	G		

Winkworth

Winkworth

South Kensington Sales | 020 7373 5052
 southkensington@winkworth.co.uk

See things differently