



2 BULLFINCH RISE, BRACKNELL, BERKSHIRE, RG12 8BS  
**£272,500 LEASEHOLD**

**LOCATED IN THE POPULAR AREA OF JENNETT'S PARK IS  
THIS LARGE TWO BEDROOM GROUND FLOOR APARTMENT  
BENEFITTING FROM AN ALLOCATED PARKING SPACE.**

**Winkworth**

Wokingham | 01189 072777 | [wokingham@winkworth.co.uk](mailto:wokingham@winkworth.co.uk)

for every step...

[winkworth.co.uk](http://winkworth.co.uk)



## DESCRIPTION:

Located in the popular area of Jennett's Park is this large two bedroom ground floor apartment benefitting from an allocated parking space.

The property comprises a uniquely shaped 20' kitchen diner/lounge area, a large master bedroom with fitted wardrobes, a second bedroom that could be utilised as a study, a 3 piece bathroom suite and a spacious hallway.

Bullfinch Rise is perfectly located close to local amenities, country walks, Jennett's park school and easy access to the A329/M4.

## AT A GLANCE

- Two Bedroom Ground Floor Apartment
- One Allocated Parking Space
- Close to Amenities and Walks
- Mains Gas, electric, water and sewage
- Gas central heating
- Mobile Coverage for EE, Three, Vodaphone & O2
- Ultrafast Broadband 1000 Mbps
- Great Satellite / Fibre TV Availability

**Tenure:** Leasehold

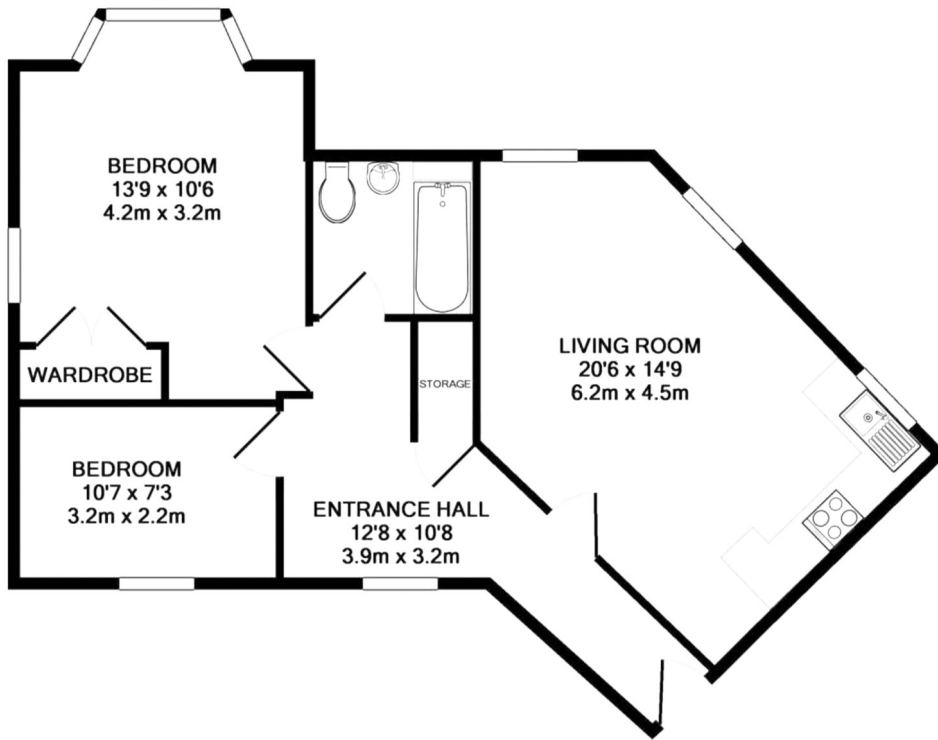
**Term:** 108 year and 11 months

**Service Charge:** £1823 per annum

**Ground Rent:** £ 265 Annually (subject to increase)

Where no figures are shown, we have been unable to ascertain the information. All figures that are shown were correct at the time of printing.





TOTAL APPROX. FLOOR AREA 644 SQ.FT. (59.8 SQ.M.)

Whilst every attempt has been made to ensure the accuracy of the floor plan contained here, measurements of doors, windows, rooms and any other items are approximate and no responsibility is taken for any error, omission, or mis-statement. This plan is for illustrative purposes only and should be used as such by any prospective purchaser. The services, systems and appliances shown have not been tested and no guarantee as to their operability or efficiency can be given  
 Made with Metropix ©2013

This floorplan is for illustration purposes only and is not to scale. The position and size of doors, windows, appliances and other features are approximate.

Wokingham | 01189 072777 | wokingham@winkworth.co.uk



for every step...

winkworth.co.uk

Winkworth wishes to inform prospective buyers and tenants that these particulars are a guide and act as information only. All our details are given in good faith and believed to be correct at the time of printing but they don't form part of an offer or contract. No Winkworth employee has authority to make or give any representation or warranty in relation to this property. All fixtures and fittings, whether fitted or not are deemed removable by the vendor unless stated otherwise and room sizes are measured between internal wall surfaces, including furnishings.