

Warwick Mansions SW5

Winkworth



# Warwick Mansions, SW5

London, SW5

Second floor one-bedroom apartment in period mansion block requiring complete renovation. Features abundant natural light throughout and includes a small balcony. Conveniently located just 6 minutes' walk from Earl's Court tube station with access to District, Circle and Piccadilly lines. Good bones with potential to create an ideal living space.

**ASKING PRICE:** £650,000 Subject to Contract

**TENURE:** Leasehold approx. 970 years remaining

**LOCAL AUTHORITY:** The Royal Borough of Kensington & Chelsea

**SERVICE CHARGE:** To be confirmed

**GROUND RENT:** To be confirmed





**Renovation Needed | Natural Light | Outside Space**

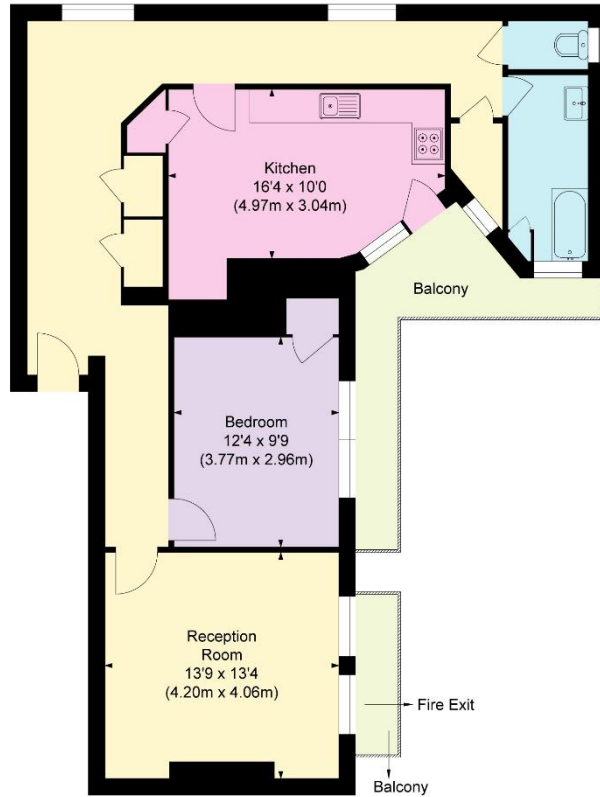
# WARWICK MANSIONS, SW5

APPROXIMATE GROSS INTERNAL AREA

893 Ft<sup>2</sup> - 83.01 M<sup>2</sup>

COMPLIANT WITH RICS CODE OF MEASURING PRACTICE Floorplan is for illustrative purposes only and is not to scale. Every attempt has been made to ensure the accuracy of the floorplan shown, however all measurements, fixtures, fittings and data shown are an approximate interpretation for illustrative purposes only. Liability for errors, omissions or mis-statement through negligence or otherwise is hereby excluded.

Key :  
CH - Ceiling Height



SECOND FLOOR



Score	Energy rating	Current	Potential
92+	A		
81-91	B		81 B
69-80	C		
55-68	D		
39-54	E	53 E	
21-38	F		
1-20	G		

**Winkworth**

**Winkworth**

South Kensington Sales | 020 7373 5052

southkensington@winkworth.co.uk

See things differently