



WOODVALE WAY, CRICKLEWOOD, LONDON, NW11  
**£400,000 LEASEHOLD**

## A TWO BEDROOM APARTMENT WELL LOCATED CLOSE TO CRICKLEWOOD OVERGROUND STATION...

Golders Green | 020 8458 8313 | goldersgreen@winkworth.co.uk

**Winkworth**

for every step...

*winkworth.co.uk*



### DESCRIPTION:

A two-bedroom apartment well located close to Cricklewood Overground Station. Situated on the second floor (no lift) of a purpose built this apartment comprises two double bedrooms, tiled modern bathroom suite and a spacious living room with access to a well-equipped kitchen. Further benefits include wood style flooring, residents parking, chain free and be benefits from a newly extended lease of approx 156 years. CHAIN FREE.

Early viewings recommended.

### AT A GLANCE

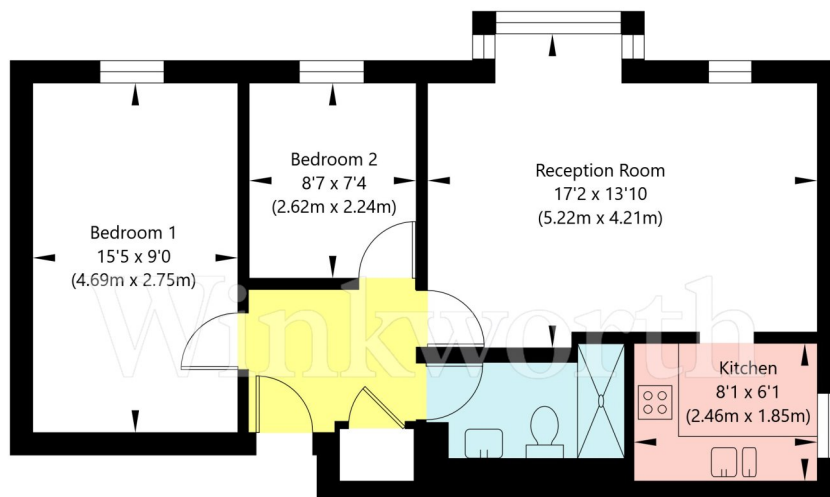
- TWO DOUBLE BEDROOMS
- SECOND FLOOR (NO LIFT)
- NEWLY DECORATED
- RESIDENTS PARKING
- CHAIN FREE
- NEW LONG LEASE GRANTED (156)





Woodvale Way, London NW11 8SQ

Second Floor  
GROSS INTERNAL FLOOR AREA  
APPROX. 54.59 SQ M / 588 SQ FT



APPROXIMATE GROSS INTERNAL FLOOR AREA 54.59 SQ M / 588 SQ FT  
THIS FLOOR PLAN IS FOR ILLUSTRATIVE PURPOSES ONLY AND  
SHOULD BE USED FOR THIS PURPOSE BY PROSPECTIVE APPLICANTS AS ITS NOT TO SCALE.

(c) AMBERSHORE PIX LIMITED / PHOTO - VIDEO - FLOOR PLANS / 0800 999 1577 / WWW.AMBERSHOREPIX.CO.UK

This floorplan is for illustration purposes only and is not to scale. The position and size of doors, windows, appliances and other features are approximate.

**Tenure:** Leasehold

**Term:** 156 years

**Council Tax Band:** D

Where no figures are shown, we have been unable to ascertain the information. All figures that are shown were correct at the time of printing.

Golders Green | 020 8458 8313 | goldersgreen@winkworth.co.uk

**Winkworth**

for every step...

*winkworth.co.uk*

Winkworth wishes to inform prospective buyers and tenants that these particulars are a guide and act as information only. All our details are given in good faith and believed to be correct at the time of printing but they don't form part of an offer or contract. No Winkworth employee has authority to make or give any representation or warranty in relation to this property. All fixtures and fittings, whether fitted or not are deemed removable by the vendor unless stated otherwise and room sizes are measured between internal wall surfaces, including furnishings.