



FOULSER ROAD, SW17
OIEO £325,000 LEASEHOLD

A BRIGHT AND WELL PRESENTED ONE BEDROOM FIRST FLOOR FLAT.

Tooting | 020 8767 5221 | tooting@winkworth.co.uk

Winkworth

for every step...

winkworth.co.uk

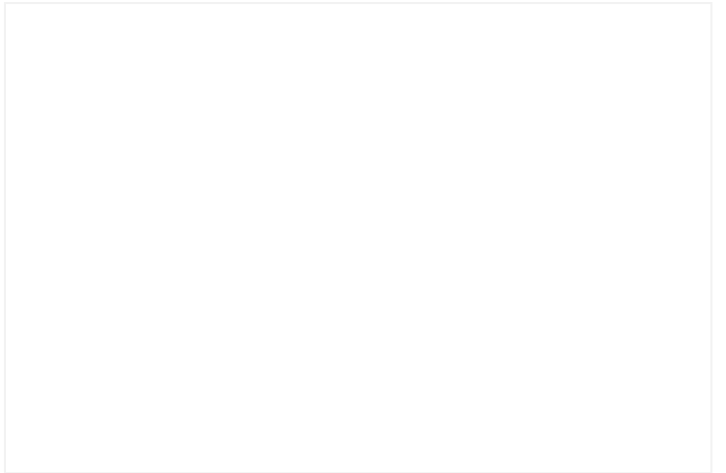
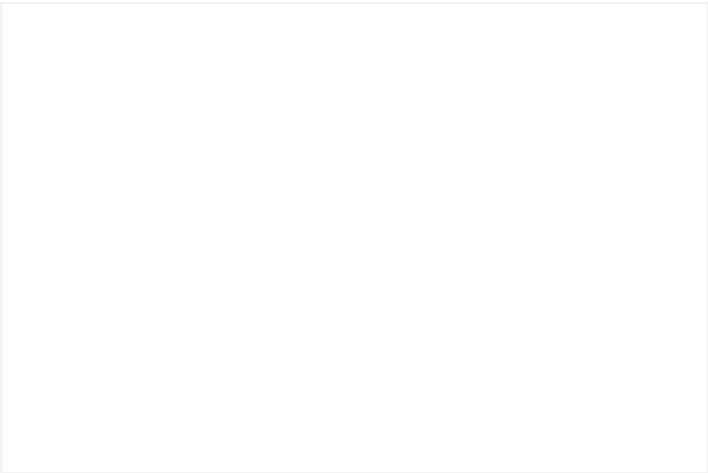


DESCRIPTION:

Nestled in the heart of a lively neighbourhood, this delightful first-floor apartment seamlessly combines modern convenience with classic charm. The well-maintained property includes a double bedroom, a bright living room, and an open-plan kitchen/dining area. The fully equipped kitchen and stylish bathroom add to the home's appeal, making it an inviting and comfortable space.

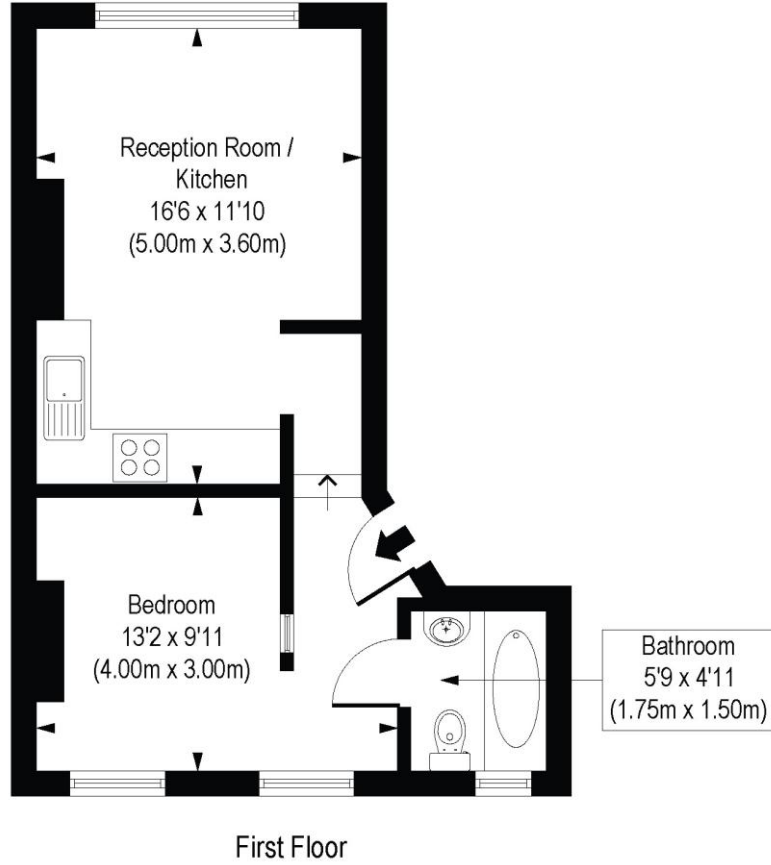
Foulser Road, located in the heart of Tooting Bec, is a charming, tree-lined street with excellent transport links. Just a short walk from Tooting Bec Underground Station (Northern Line), it offers easy access to central London. The area is rich in amenities, including independent cafés, restaurants, supermarkets, and nearby Tooting Bec Common for green space. A mix of period properties and modern developments adds to its charm, making it a sought-after location for professionals and families alike.

Wandsworth Council Tax Band: C



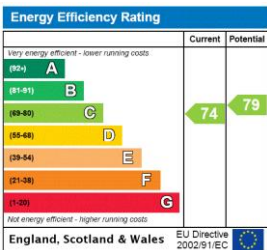
Foulser Road, SW17

Approx. Gross Internal Floor Area 360 sq. ft / 33.42 sq. m



COMPLIANT WITH RICS CODE OF MEASURING PRACTICE. Floorplan is for illustrative purposes only and is not to scale. Every attempt has been made to ensure the accuracy of the floorplan shown, however all measurements, fixtures, fittings and data shown are an approximate interpretation for illustrative purposes only. Liability for errors, omissions or mis-statement through negligence or otherwise is hereby excluded.

This floorplan is for illustration purposes only and is not to scale. The position and size of doors, windows, appliances and other features are approximate.



Tooting | 020 8767 5221 | tooting@winkworth.co.uk

for every step...

winkworth.co.uk

Winkworth wishes to inform prospective buyers and tenants that these particulars are a guide and act as information only. All our details are given in good faith and believed to be correct at the time of printing but they don't form part of an offer or contract. No Winkworth employee has authority to make or give any representation or warranty in relation to this property. All fixtures and fittings, whether fitted or not are deemed removable by the vendor unless stated otherwise and room sizes are measured between internal wall surfaces, including furnishings.