



HEWITT, READING, BERKSHIRE, RG1 7LS
£1,500 PER MONTH UNFURNISHED

MODERN TWO BEDROOM APARTMENT LOCATED ON
THE FIRST FLOOR OF THE HEWITT DEVELOPMENT IN
READING TOWN CENTRE

Reading | 0118 4022 300 | reading@winkworth.co.uk

Winkworth

for every step...

winkworth.co.uk



DESCRIPTION:

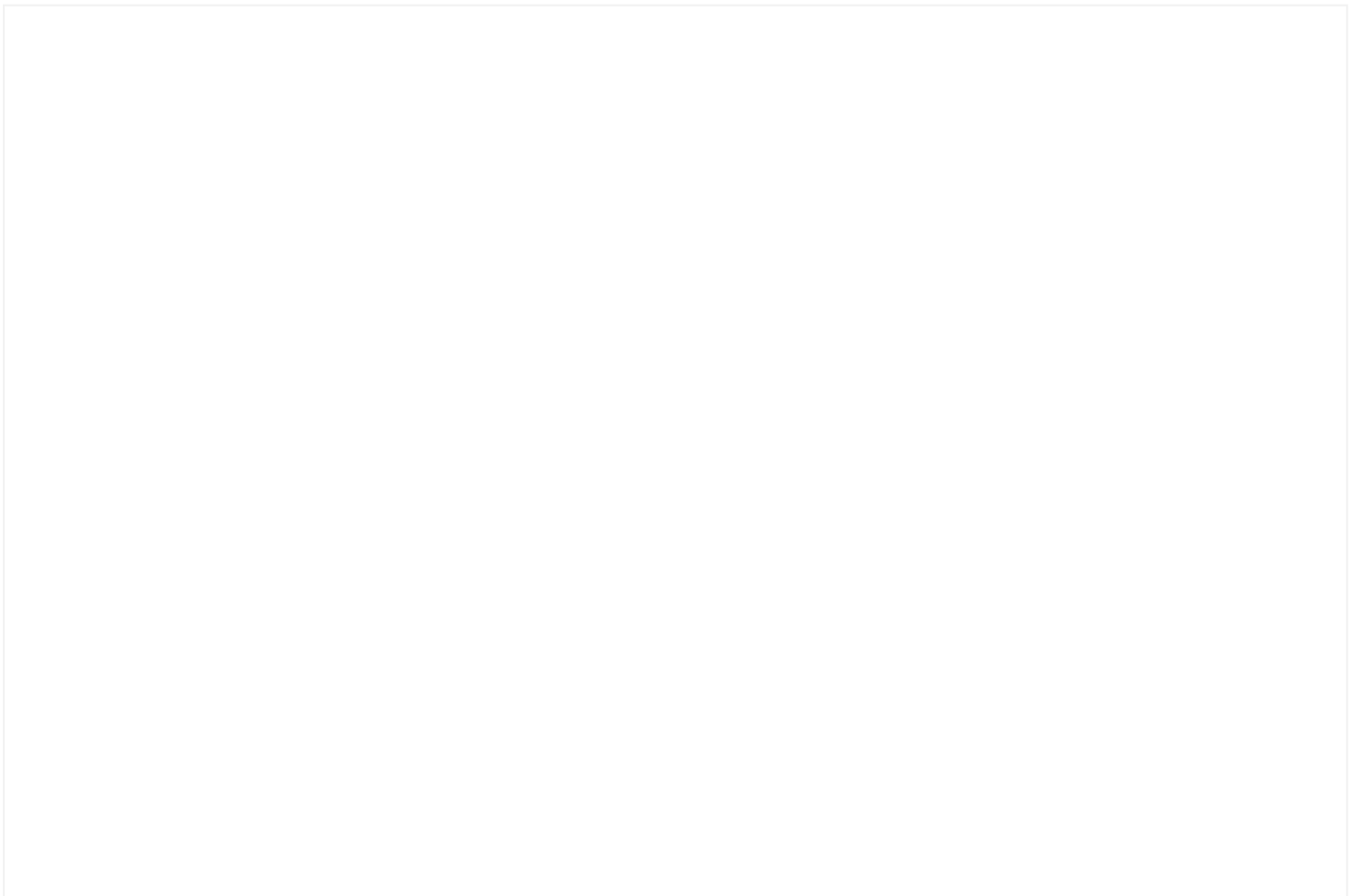
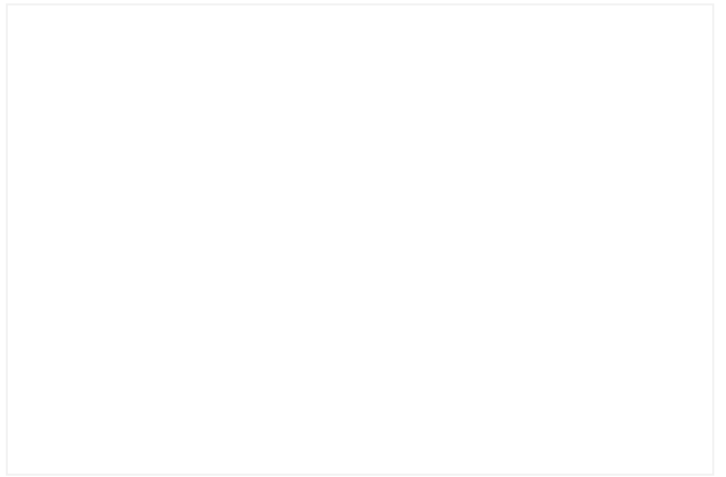
Modern two bedroom apartment located on the first floor of the Hewitt development in Reading town centre, a short walk from Reading train station. The property comprises a spacious living room with open plan kitchen benefitting from integrated appliances, two double bedrooms, en suite shower room to the master bedroom and a three piece bathroom. Additional benefits include underfloor heating and spotlights throughout. Available now. Unfurnished.

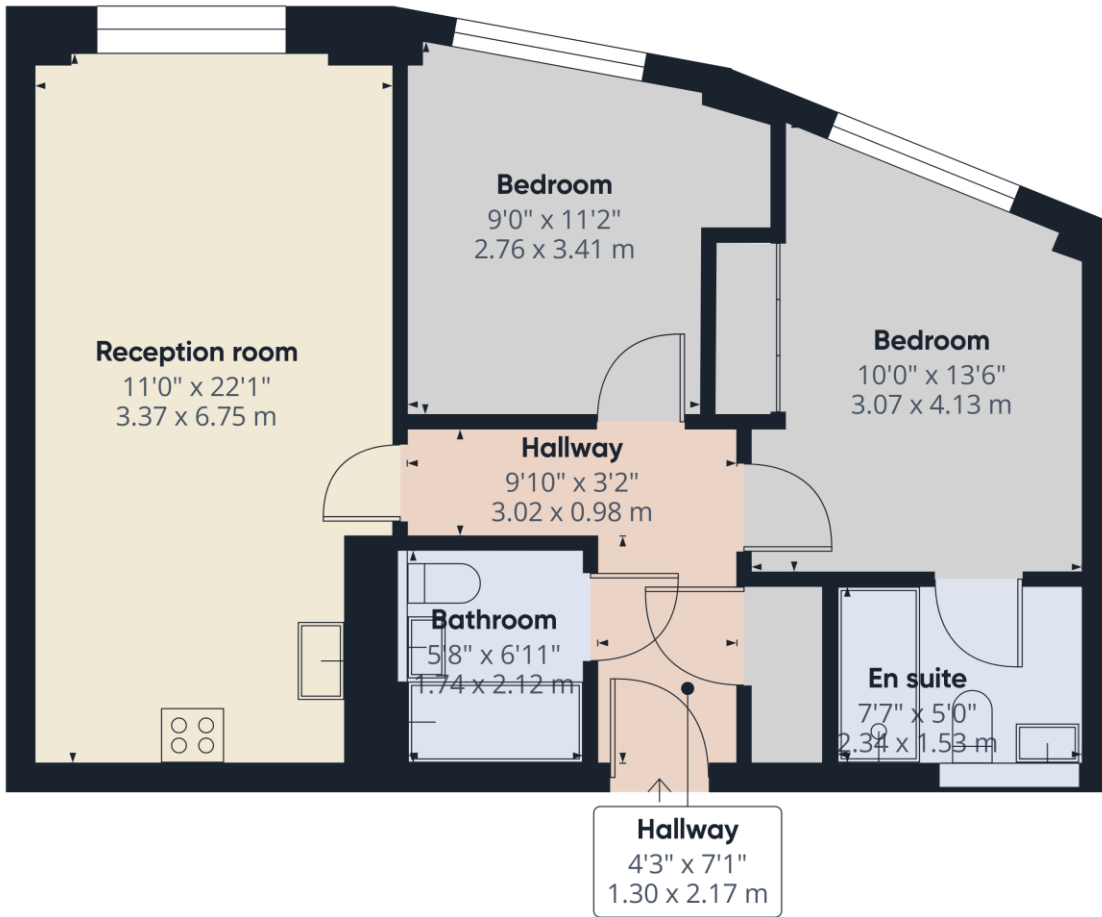
*No parking

AT A GLANCE

- Two bedroom town centre apartment
- First floor with lift access
- Two bathrooms
- Council tax band D
- No parking
- Available now
- Unfurnished







Approximate total area⁽¹⁾
616.13 ft²
57.24 m²

(1) Excluding balconies and terraces

While every attempt has been made to ensure accuracy, all measurements are approximate, not to scale. This floor plan is for illustrative purposes only.

Calculations were based on RICS IPMS 3C standard. Please note that calculations were adjusted by a third party and therefore may not comply with RICS IPMS 3C.

GIRAFFE360

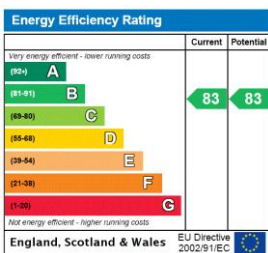
This floorplan is for illustration purposes only and is not to scale. The position and size of doors, windows, appliances and other features are approximate.

Deposit: £1,730.77

Holding Deposit: £346.15

Council Tax Band: D

Where no figures are shown, we have been unable to ascertain the information. All figures that are shown were correct at the time of printing.



Reading | 0118 4022 300 | reading@winkworth.co.uk