



WHITTINGSTALL ROAD, SW6 £645 PER WEEK UNFURNISHED

A beautifully presented first floor, two double bedroom flat, located on a particularly attractive and popular street close to Parsons Green.

Fulham & Parsons Green | 020 7731 3388 | fulham@winkworth.co.uk

Winkworth

for every step...

winkworth.co.uk

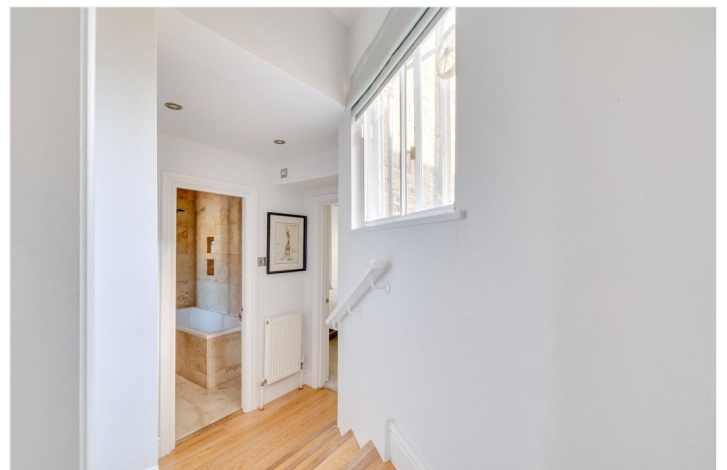


This property has been refurbished to a high standard by the current owner and is in exceptional decorative order.

There is a grand open plan reception room with high ceilings a feature fireplace and wooden floors. There is ample space for a dining table and this room is a great space for entertaining. The separate kitchen has wall to ceiling built-in units and has lovely views looking down Whittingstall Road.

The two double bedrooms are large and of equal size, situated at opposite ends of the flat, both with built in storage. The master bedroom has a beautiful original fireplace. These are served by a spacious family bathroom.

Whittingstall Road is an excellent location to live, having access to wonderful and extensive amenities that the vibrant Parson Green area has to offer. There are a range of shops and restaurants on the Fulham Road. You are a few minutes' walk to Parsons Green underground station and there are excellent bus links to central London. Fulham Broadway is also a close with its cinema complex, gym and further amenities.

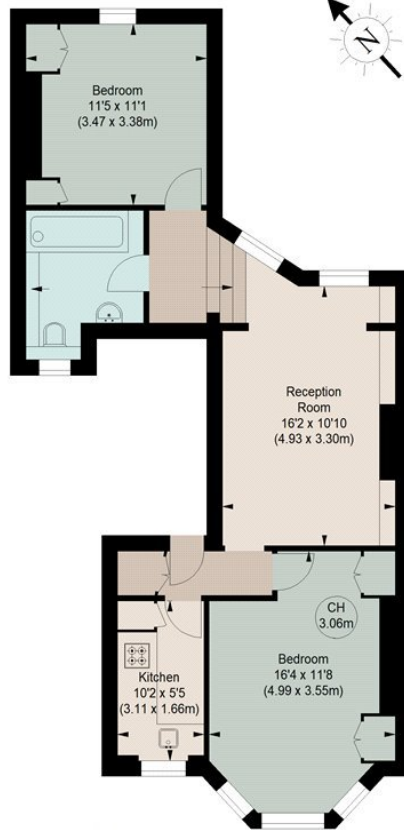




WHITTINGSTALL ROAD, SW6

Approximate gross internal area
668 sq ft / 62.06 sq m

Key :
CH - Ceiling Height



FIRST FLOOR

The floor plan is not to scale and measurements and areas shown are approximate and therefore should be used for illustrative purposes only. The plan has been prepared in accordance with the RICS code of Measuring Practice and whilst we have confidence in the information produced, it must not be relied on. If there is any aspect of particular importance, you should carry out or commission your own inspection of the property.

This floorplan is for illustration purposes only and is not to scale. The position and size of doors, windows, appliances and other features are approximate.

Fulham & Parsons Green | 020 7731 3388 | fulham@winkworth.co.uk

Winkworth

for every step...

winkworth.co.uk

Winkworth wishes to inform prospective buyers and tenants that these particulars are a guide and act as information only. All our details are given in good faith and believed to be correct at the time of printing but they don't form part of an offer or contract. No Winkworth employee has authority to make or give any representation or warranty in relation to this property. All fixtures and fittings, whether fitted or not are deemed removable by the vendor unless stated otherwise and room sizes are measured between internal wall surfaces, including furnishings.