

PIMENTO HOUSE, BRIDLE MEWS, LONDON, E1  
**£422,500 LEASEHOLD**

## A TWO BEDROOM APARTMENT WITH SOUTH FACING BALCONY IN GOODMAN'S FIELDS NEAR ALDGATE

Shoreditch | 020 7749 7650 | [shoreditch@winkworth.co.uk](mailto:shoreditch@winkworth.co.uk)

**Winkworth**



### **DESCRIPTION:**

65% Shared Ownership, prospective buyers will need to meet eligibility.

A stunning two-bedroom apartment with private south facing balcony on the second floor of Pimento House, part of the popular Goodman's Fields development.

Standing at 674sq ft., the apartment features floor to ceiling windows and is flooded with natural light throughout. The spacious open plan living room opens onto a private, covered, South facing balcony. Both the bedrooms are of generous size and benefit from floor to ceiling South facing windows. The fully fitted kitchen includes a dishwasher, oven, hob, full length fridge/freezer. The property is completed with a modern family bathroom and a spacious storage cupboard and two separate utility cupboards.

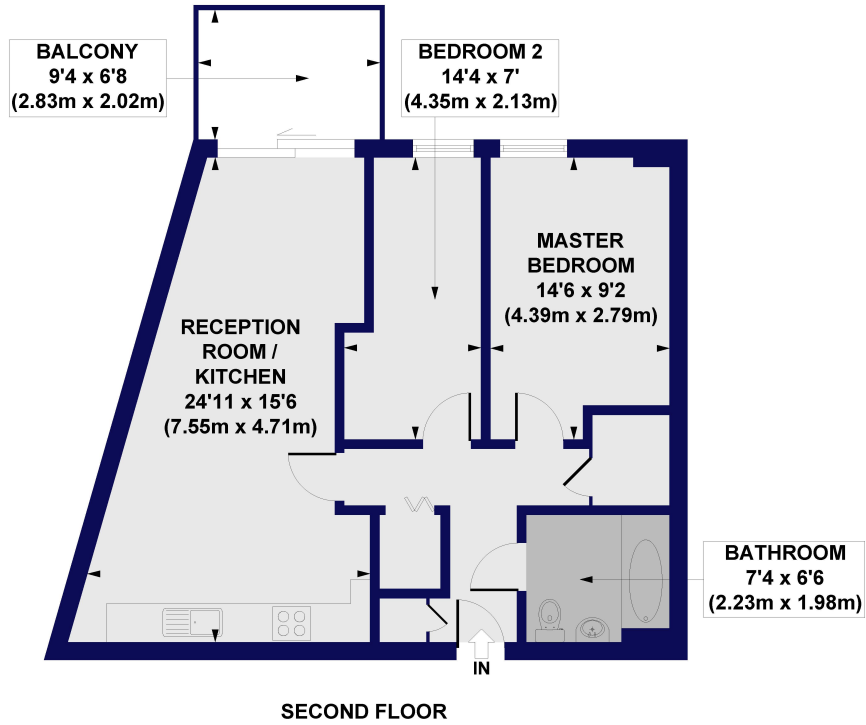
Pimento House is part of Goodman's Fields which is a mixed-use urban quarter providing a selection of beautiful apartments as well as independent coffee shops, cafes and restaurants, a hotel, 2 acres of stunning landscaping and unforgettable public art. Residents benefit from a 24-hour concierge and can have access to the residents' private screening room, pool, gym, and spa for a nominal fee. The development is just moments' walk from the City and Shoreditch.

**Winkworth**



**Winkworth**

**Pimento House, Bridle Mews, E1**  
**Approx. Gross Internal Floor Area 674 sq. ft / 62.63 sq. m**



All measurements of walls, doors, windows, fittings and appliances, including their size and location, are shown as standard sizes and do not constitute any warranty or representation by the seller, their agent or CP Creative. Any intending purchaser must satisfy himself by inspection or otherwise as to the correctness of the information contained in these plans. This plan is for illustrative purposes only and should be used as such by any prospective purchasers.

**Winkworth**

This floorplan is for illustration purposes only and is not to scale. The position and size of doors, windows, appliances and other features are approximate.

Energy Efficiency Rating		Current	Potential
Very energy efficient - lower running costs			
(92-100) <b>A</b>			
(81-91) <b>B</b>		86	86
(69-80) <b>C</b>			
(55-68) <b>D</b>			
(39-54) <b>E</b>			
(21-38) <b>F</b>			
(1-20) <b>G</b>			
Not energy efficient - higher running costs			
England, Scotland & Wales		EU Directive 2002/91/EC	

Shoreditch | 020 7749 7650 | shoreditch@winkworth.co.uk



winkworth.co.uk

See things differently

Winkworth wishes to inform prospective buyers and tenants that these particulars are a guide and act as information only. All our details are given in good faith and believed to be correct at the time of printing but they don't form part of an offer or contract. No Winkworth employee has authority to make or give any representation or warranty in relation to this property. All fixtures and fittings, whether fitted or not are deemed removable by the vendor unless stated otherwise and room sizes are measured between internal wall surfaces, including furnishings.