



SEYMOUR ROAD, HARRINGAY LADDER, N8
£1,350,000 FREEHOLD

Available off market, this beautifully restored five-bedroom home offers 1,867 sq ft of thoughtfully designed living space, blending original character with high-quality finishes. Set across three floors and including a fully equipped garden office, it's an ideal option for those looking for a turnkey family home with lots of flexibility.

Harringay | 020 8800 5151 | harringay@winkworth.co.uk



DESCRIPTION:

Available off market, this beautifully restored five-bedroom home offers 1,867 sq ft of internal space, thoughtfully arranged over three floors.

Carefully updated by the current owners, the house strikes a great balance between period charm and contemporary design. Original features have been retained where it counts, while the layout and finishes have been adapted with modern family living in mind.

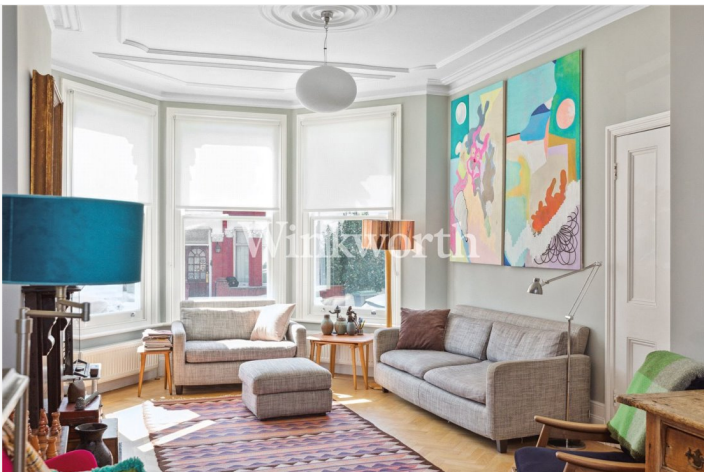
The ground floor includes a spacious double reception room with bay windows and herringbone flooring, which continues throughout the ground floor. This flows into a bright and well-appointed kitchen/diner, extended to the rear and opening directly onto the garden. There's also a convenient WC on this level.

Upstairs, five bedrooms are arranged across the upper two floors, along with two stylishly finished bathrooms.

The rear garden has been landscaped and features a fully equipped garden office—ideal for anyone working from home or in need of a separate creative space.

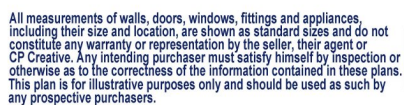
A turnkey home with thoughtful updates throughout, this is a rare opportunity to secure a substantial freehold property off market.

Please contact the sales team on 0208 800 5151 or email Harringay@winkworth.co.uk to make an enquiry.



Approx. Gross Internal Floor Area 2194 sq. ft / 203.85 sq. m (Including Restricted Height Area, Eaves, Cellar & Studio)
Approx. Gross Internal Floor Area 1867 sq. ft / 173.45 sq. m (Excluding Restricted Height Area, Eaves, Cellar & Studio)

Approx. Gross Internal Floor Area 1867 sq. ft / 173.45 sq. m (Excluding Restricted Height Area, Eaves, Cellar & Studio)



This floorplan is for illustration purposes only and is not to scale. The position and size of doors, windows, appliances and other features are approximate.