



## Regency Street, Westminster, SW1P

£1,700 PER MONTH

**PART FURNISHED**

### AT A GLANCE

- Studio
- Secure entrance
- Modern bathroom
- Separate kitchen
- Storage
- Part furnished

**Winkworth**

for every step...



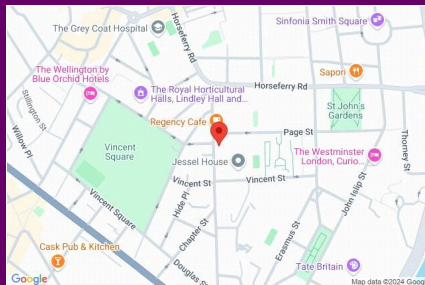
Energy Efficiency Rating		
	Current	Potential
Very energy efficient - lower running costs		
(92+) <b>A</b>		
(81-91) <b>B</b>		
(69-80) <b>C</b>	72	80
(55-68) <b>D</b>		
(39-54) <b>E</b>		
(21-38) <b>F</b>		
(1-20) <b>G</b>		
Not energy efficient - higher running costs		
England, Scotland & Wales	EU Directive 2002/91/EC	

## REGENCY STREET, WESTMINSTER, SW1P

£1,700 PER MONTH  
PART FURNISHED

A well located, studio apartment in a secure, well maintained block. The flat comprises of a good sized living room/bedroom with storage cupboard, a modern bathroom with shower over bath and a separate kitchen with electric hob and washing machine.

The flat is only a short walk to Pimlico Underground (Victoria Line, 0.3 miles) and there are an array of shops, restaurants and cafes nearby. The beautiful, green open space of St James Park is also only approximately 0.6 miles walk.

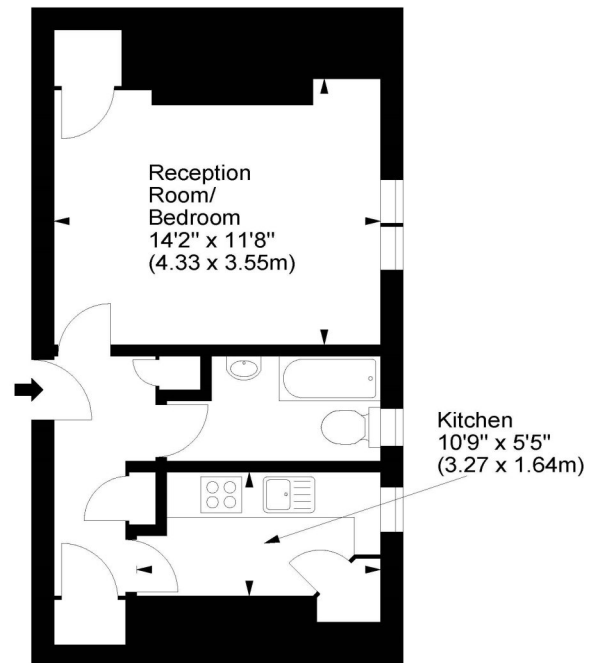


winkworth wishes to inform prospective buyers and tenants that these particulars are a guide and act as information only. All our details are given in good faith and believed to be correct at the time of printing but they don't form part of an offer or contract. No winkworth employee has authority to make or give any representation or warranty in relation to this property. All fixtures and fittings, whether fitted or not are deemed removable by the vendor unless stated otherwise and room sizes are measured between internal wall surfaces - including fireplaces.

### Norfolk House, SW1



Approx. Gross Internal Area  
345 Sq Ft - 32.05 Sq M



Second Floor

For illustration purposes only. Not to scale.  
All measurements are taken and shown at floor level.  
[www.r3photography.co.uk](http://www.r3photography.co.uk) © Photography / Floor Plans / Lease Plans / EPCs



Pimlico & Westminster | 020 7828 1786 |  
[pimlico@winkworth.co.uk](mailto:pimlico@winkworth.co.uk)

[winkworth.co.uk/pimlico](http://winkworth.co.uk/pimlico)

**Winkworth**

for every step...