



CIBBER ROAD, LONDON, SE23
£600,000 FREEHOLD

This charming 2-bedroom Victorian house offers a fantastic opportunity to embrace character-filled living in a desirable area.

Winkworth

for every step...

Forest Hill | foresthill@winkworth.co.uk

winkworth.co.uk



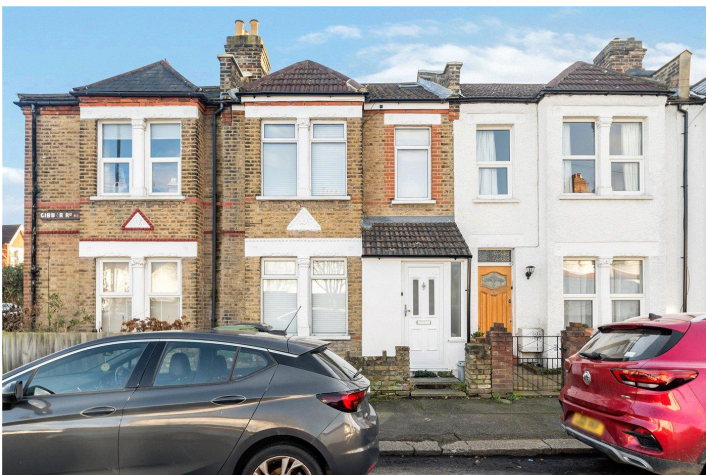
DESCRIPTION:

Located in the heart of SE23, this property is offered chain-free, making it an ideal choice for those looking for a smooth and swift move. The house retains much of its original charm, with period features such as high ceilings, sash windows, and exposed floorboards, creating a warm and inviting atmosphere throughout. The spacious living room is the perfect space to relax, while the separate kitchen is well-equipped and offers ample potential for renovation or personal touches.



Winkworth

for every step...



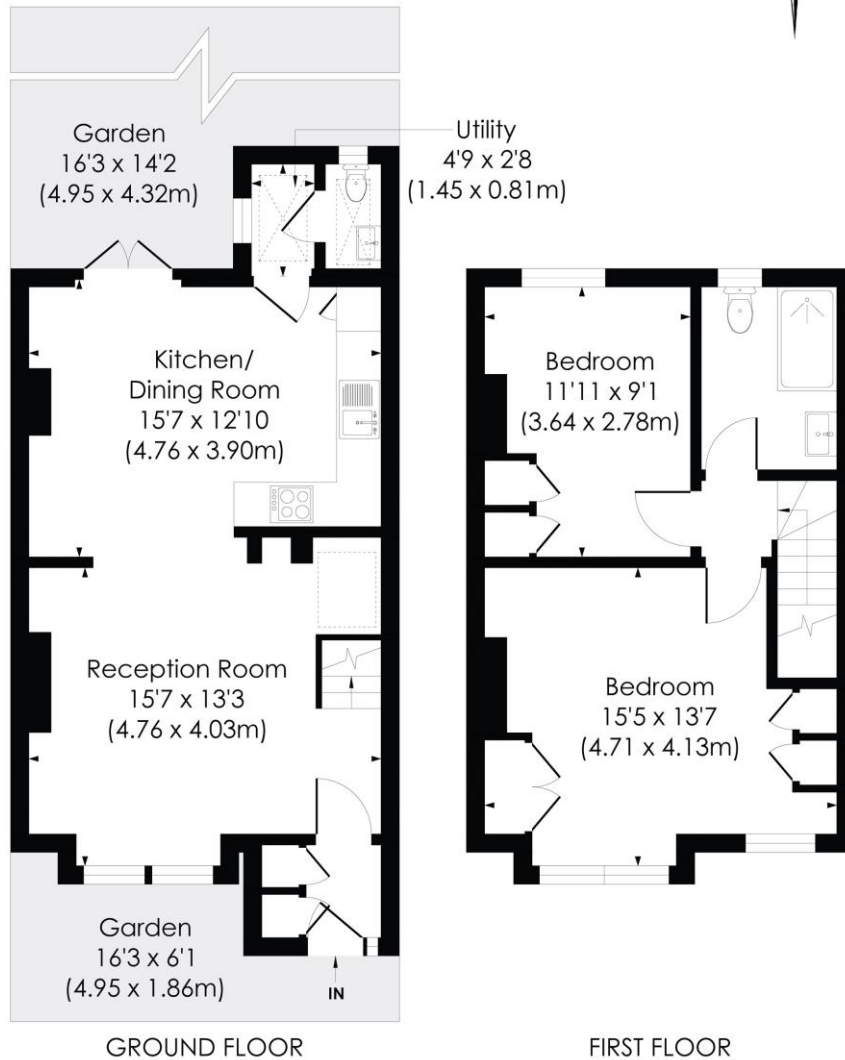
Winkworth

for every step...

CIBBER ROAD, SE23

Approx. Gross Internal Floor Area

834 Sq. ft/77.44 Sq. m



© Pixangle Property Marketing Ltd. info@pixangle.com Tel: 0208 870 2118

pixangle
PROPERTY MARKETING

This floor plan has been prepared for the purpose of illustration only in accordance with the latest RICS code of measuring practice and is not to scale. All measurements and areas are approximate and whilst every effort has been made to ensure the accuracy of the plan contained here, no responsibility is taken for any error, omission or misstatement.

This floorplan is for illustration purposes only and is not to scale. The position and size of doors, windows, appliances and other features are approximate.

COUNCIL TAX BAND- C

LOCAL AUTHORITY - Lewisham

TENURE- Freehold

SERVICES: Mains Electric, Gas, Drainage & Water.

BROADBAND: Ultrafast & Standard Broadband Available. Checked on Openreach Feb 2025.

MOBILE SIGNAL: You are likely to have limited voice coverage & data with some mobile providers

HEATING: Gas Central Heating

Forest Hill | foresthill@winkworth.co.uk

winkworth.co.uk

Winkworth

for every step...

Winkworth wishes to inform prospective buyers and tenants that these particulars are a guide and act as information only. All our details are given in good faith and believed to be correct at the time of printing but they don't form part of an offer or contract. No Winkworth employee has authority to make or give any representation or warranty in relation to this property. All fixtures and fittings, whether fitted or not are deemed removable by the vendor unless stated otherwise and room sizes are measured between internal wall surfaces, including furnishings.